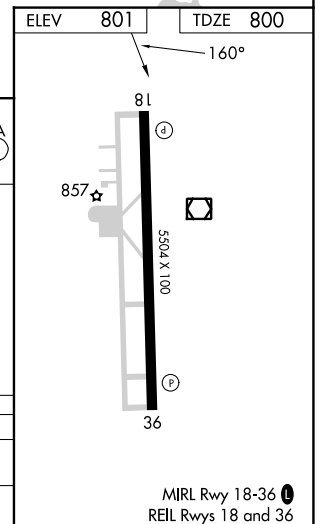
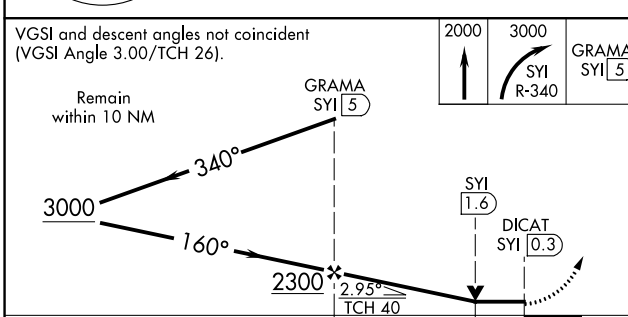
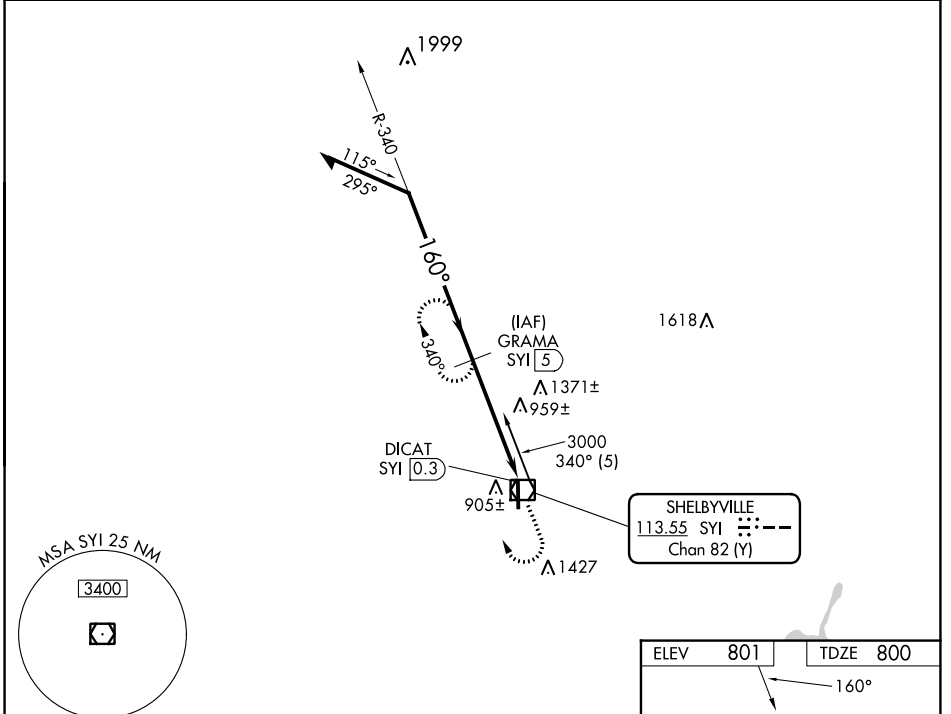


VOR/DME SYI <b>113.55</b> Chan <b>82</b> (Y)	APP CRS <b>160°</b>	Rwy Idg <b>5504</b> TDZE <b>800</b> Apt Elev <b>801</b>
--	------------------------	---

# VOR/DME RWY 18

BOMAR FLD/SHELBYVILLE MUNI (SYI)

<p><b>⚠</b> NA When local altimeter setting not received, use Tullahoma altimeter setting and increase all MDA 80 feet, and increase S-18 Cat C and D visibility 1/8 SM. VDP NA when using Nashville Intl altimeter setting.</p>	<p><b>MISSED APPROACH:</b> Climb to 2000 then climbing right turn to 3000 via SYI R-340 to GRAMA/5 DME and hold.</p>	
<p>AWOS-3 <b>119.275</b></p>	<p>MEMPHIS CENTER <b>128.15 323.125</b></p>	<p>UNICOM <b>122.8</b> (CTAF) <b>0</b></p>



CATEGORY	A	B	C	D
S-18	1220-1	420 (500-1)	1220-1/4	420 (500-1/4)
<b>C</b> CIRCLING	1260-1 459 (500-1)	1420-1 619 (700-1)	1780-3	979 (1000-3)

SE-1, 28 NOV 2024 to 26 DEC 2024

SE-1, 28 NOV 2024 to 26 DEC 2024