

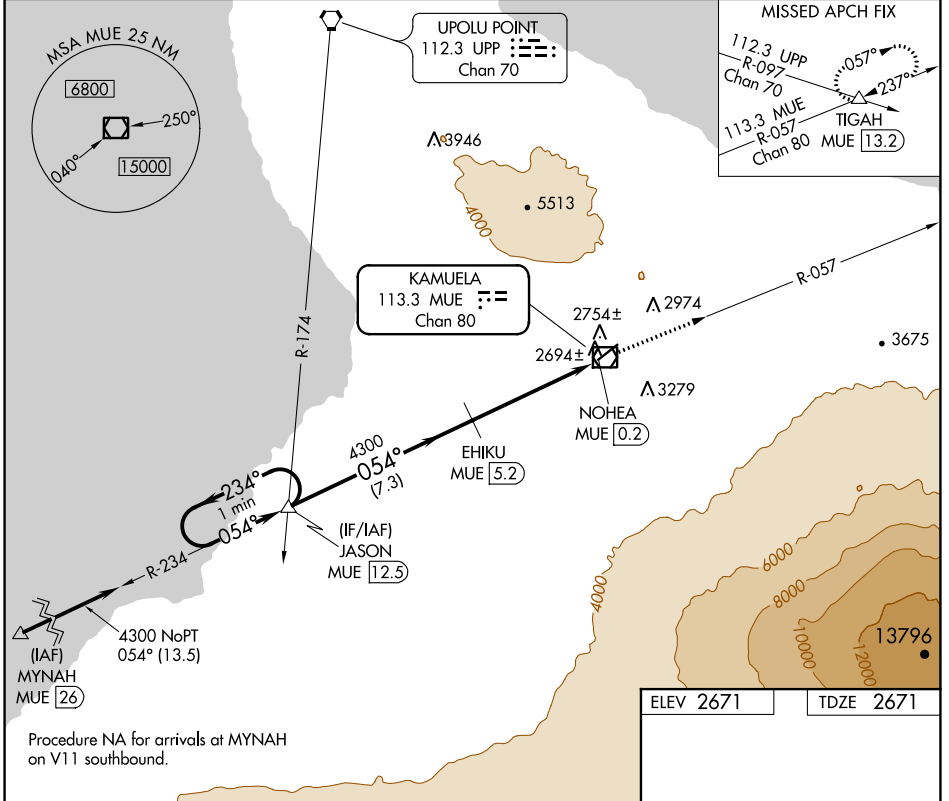
VOR/DME MUE 113.3 Chan 80	APP CRS 054°	Rwy Idg TDZE Apt Elev	5197 2671 2671
--	------------------------	-----------------------------	---

VOR/DME RWY 4
WAIMEA-KOHALA (MUE)(PHMU)

NA Circling NA northwest of Rwy 4-22.
When local altimeter setting not received, procedure NA.

MISSED APPROACH: Climb to 5000 on MUE VOR/DME R-057 to TIGAH INT/MUE 13.2 DME and hold.

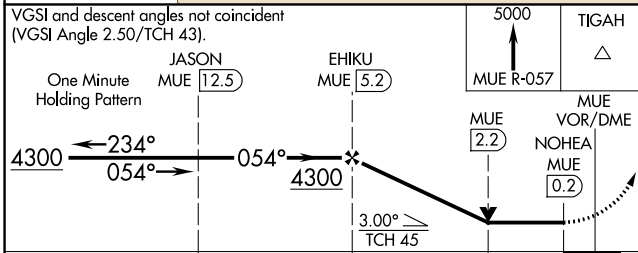
AWOS-3PT 120.0	HCF CENTER 118.45 278.3	CTAF 122.9
--------------------------	-----------------------------------	----------------------



PAC, 31 OCT 2024 to 26 DEC 2024

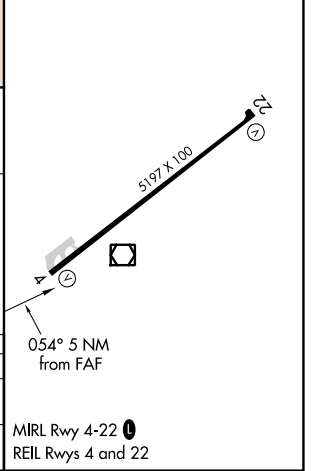
PAC, 31 OCT 2024 to 26 DEC 2024

Procedure NA for arrivals at MYNAH on V11 southbound.



ELEV 2671	TDZE 2671
-----------	-----------

CATEGORY	A	B	C	D
S-4	3360-1 689 (700-1)		3360-2 689 (700-2)	
CIRCLING	3520-1¼ 849 (900-1¼)		3580-2¾ 909 (1000-2¾)	3940-3 1269 (1300-3)



MIRL Rwy 4-22
REIL Rws 4 and 22