

WAAS CH 69509 W27A	APP CRS 275°	Rwy Idg TDZE Apt Elev	5108 455 461
--	------------------------	-----------------------------	---

RNAV (GPS) RWY 27

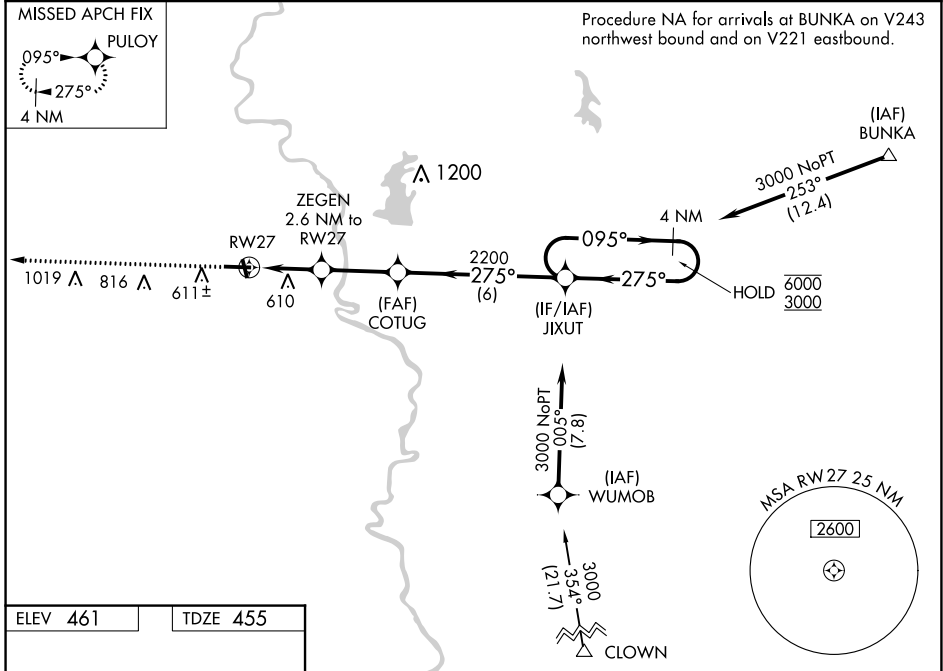
CRAWFORD COUNTY (RSV)

RNP APCH-GPS.

⚠ For uncompensated Baro-VNAV systems, LNAV/VNAV NA below -15°C or above 54°C.

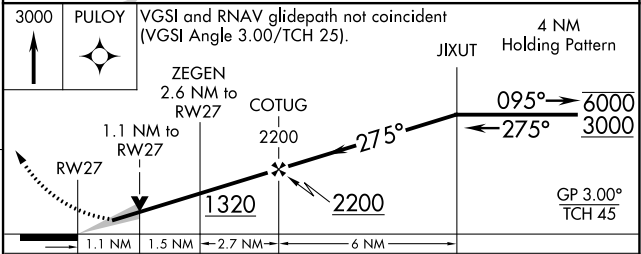
MISSED APPROACH: Climb to 3000 direct PULOY and hold.

AWOS-3 120.50	HULMAN APP CON 135.35 339.8	UNICOM 123.0 (CTAF)
-------------------------	---------------------------------------	-------------------------------



ELEV 461	TDZE 455
----------	----------

REIL Rwy 17, 9 and 27 **⓪**
MIRL Rwy 9-27 and 17-35 **⓪**



CATEGORY	A		B		C		D
LPV DA	705-1		250 (300-1)				
LNAV/VNAV DA	845-1¼		390 (400-1¼)				
LNAV MDA	840-1 385 (400-1)		840-1⅛ 385 (400-1⅛)				
⓪ CIRCLING	940-1 479 (500-1)	1080-1 619 (700-1)	1120-1¾ 659 (700-1¾)	1180-2¼ 719 (800-2¼)			

EC-3, 28 NOV 2024 to 26 DEC 2024

EC-3, 28 NOV 2024 to 26 DEC 2024