

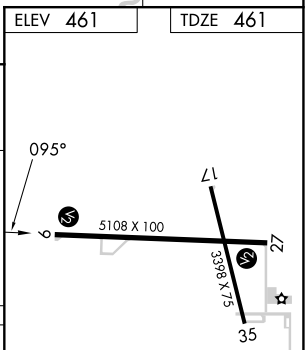
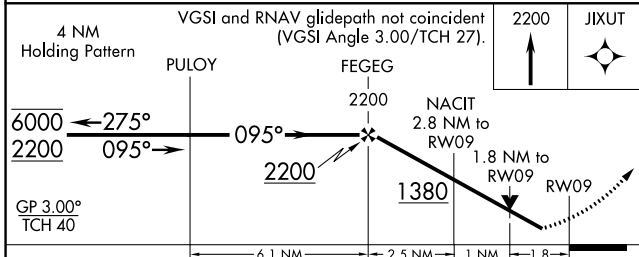
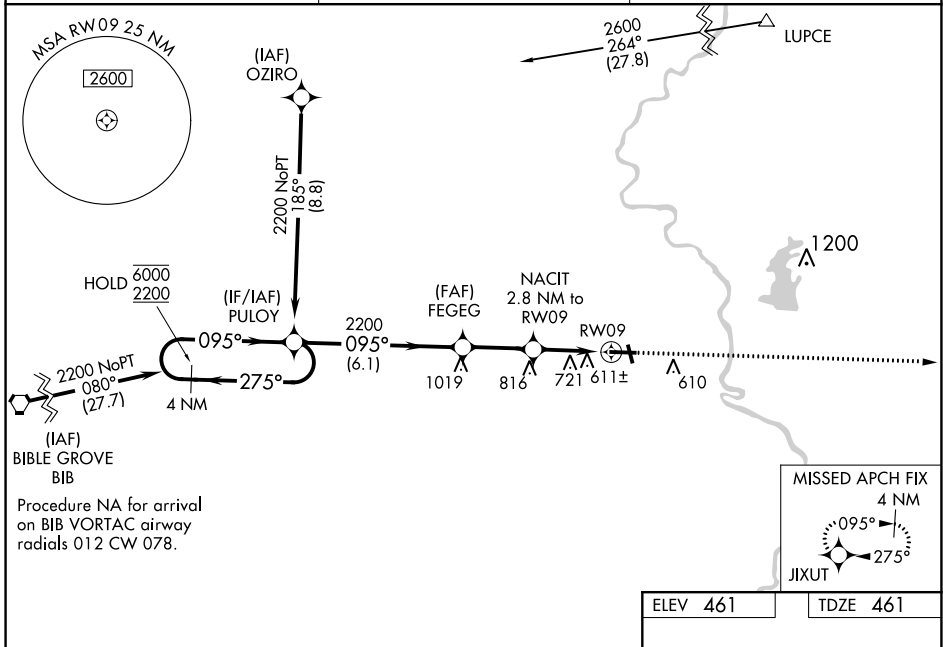
WAAS CH 49109 W09A	APP CRS 095°	Rwy Idg 5108 TDZE 461 Apt Elev 461
--	------------------------	---

RNAV (GPS) RWY 9

CRAWFORD COUNTY (RSV)

RNP APCH - GPS.		MISSED APPROACH: Climb to 2200 direct JIXUT and hold.
<p>⚠ Rwy 9 helicopter visibility reduction below ¾ SM NA. ⚠ For uncompensated Baro-VNAV systems, LNAV/VNAV NA below -15° C or above 54° C.</p>		

AWOS-3 120.50	HULMAN APP CON 135.35 339.8	UNICOM 123.0 (CTAF) 0
-------------------------	---------------------------------------	---------------------------------



CATEGORY	A	B	C	D
LPV DA		805-1 1/8 344 (400-1 1/8)		
LNAV/VNAV DA		1103-2 1/2 642 (700-2 1/2)		
LNAV MDA	1040-1 579 (600-1)		1040-1 5/8 579 (600-1 1/8)	
CIRCLING	1040-1 579 (600-1)	1080-1 619 (700-1)	1120-1 3/4 659 (700-1 3/4)	1180-2 1/4 719 (800-2 1/4)

REIL Rwy 17, 9 and 27 **0**
MRL Rwy 9-27 and 17-35 **0**

EC-3, 28 NOV 2024 to 26 DEC 2024

EC-3, 28 NOV 2024 to 26 DEC 2024