

LOC I-SPW 110.9	APP CRS 121°	Rwy Idg TDZE Apt Elev	6001 1339 1339
---------------------------	------------------------	-----------------------------	---

ILS or LOC RWY 12

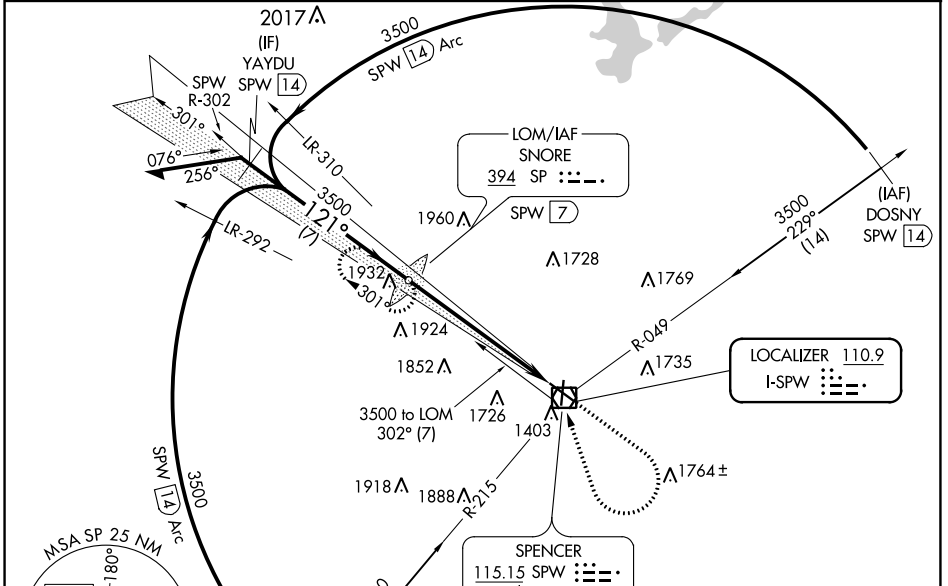
SPENCER MUNI (SPW)

ADF or DME required.

NA For inop ALS, increase S-LOC 12 Cats C and D visibility to 1 1/2 SM. When local altimeter setting not received, use Estherville altimeter setting and increase S-ILS 12 DA to 1599 feet; increase all MDAs 60 feet and S-LOC 12 visibility Cat C/D 1/2 SM, and Circling visibility Cat C/D 1/2 SM. For inop ALS, when using Estherville altimeter setting, increase S-LOC 12 Cats C and D visibility to 1 1/2 SM.

MALSR MISSED APPROACH: Climb to 3500 then right turn direct SPW VOR/DME then on SPW VOR/DME R-302 to SNORE LOM/SPW VOR/DME 7 DME and hold.

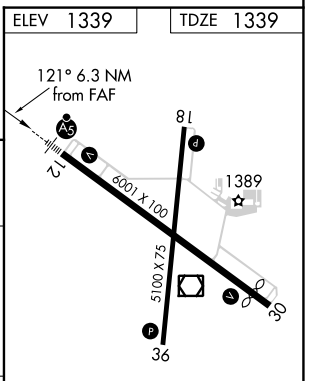
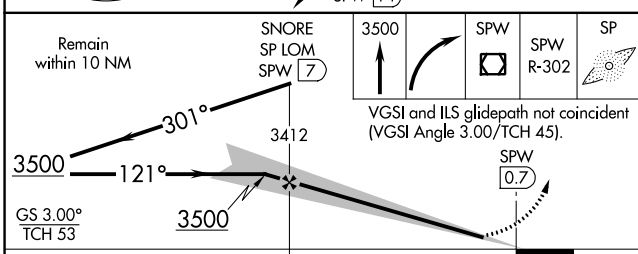
ASOS 126.625	MINNEAPOLIS CENTER 127.75 257.7	UNICOM 123.0 (CTAF) 1
------------------------	---	--



NC-3, 28 NOV 2024 to 26 DEC 2024

NC-3, 28 NOV 2024 to 26 DEC 2024

ELEV 1339	TDZE 1339
-----------	-----------



CATEGORY	A	B	C	D
S-ILS 12	1539-1/2 200 (200-1/2)			
S-LOC 12	1900-1/2 561 (600-1/2)	1900-1 1/4 561 (600-1 1/4)		
C CIRCLING	1900-1 561 (600-1)	2100-2 1/4 761 (800-2 1/4)	2100-2 1/2 761 (800-2 1/2)	

REIL Rwy 18, 30 and 36 **1**
MRL Rwy 12-30 and 18-36 **1**

FAF to MAP 6.3 NM

Knots	60	90	120	150	180
Min:Sec	6:18	4:12	3:09	2:31	2:06