

WAAS CH 56517 W12A	APP CRS 121°	Rwy Idg TDZE Apt Elev	6001 1339 1339
--	------------------------	-----------------------------	---

RNAV (GPS) RWY 12

SPENCER MUNI (SPW)

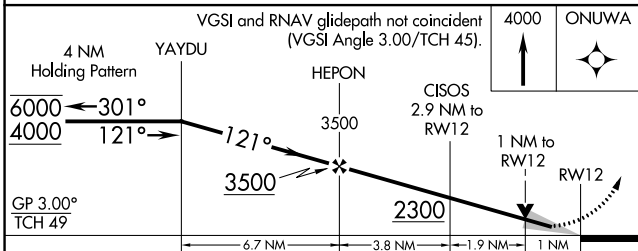
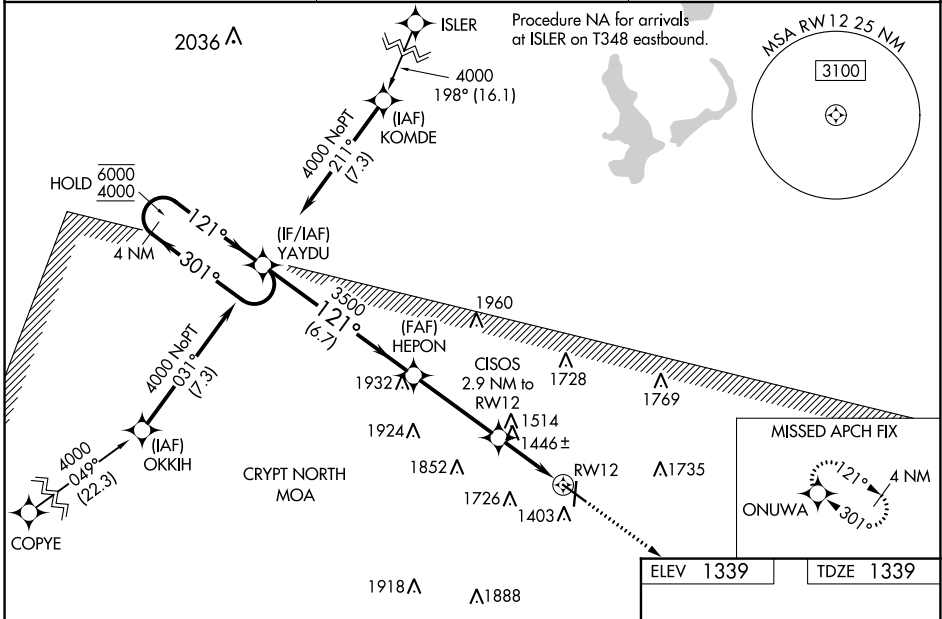
RNP APCH-GPS.

Baro-VNAV and VDP NA when using Estherville altimeter setting. For uncompensated Baro-VNAV systems, LNAV/VNAV NA below -21°C or above 54°C. When local altimeter setting not received, use Estherville altimeter setting: increase LPV DA to 1599 feet, LNAV/VNAV DA to 1650 feet; increase all MDAs 60 feet, and visibility LNAV Cat C/D ½ SM, and Circling Cat C/D ¼ SM. For inop ALS when using Estherville altimeter setting, increase LNAV/VNAV all Cats visibility to ¾ SM and LNAV Cats C/D to 1 SM. For inop ALS, increase LNAV/VNAV all Cats visibility to ¾ SM and LNAV Cat C/D to 1 SM.

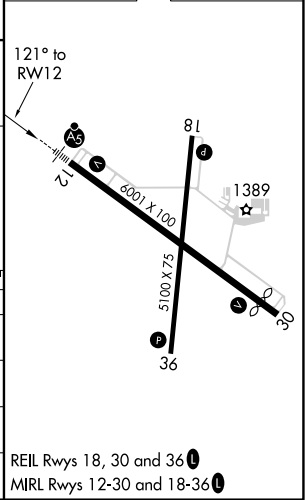
MALSRL
A5

MISSED APPROACH:
Climb to 4000 direct ONUWA and hold.

ASOS 126.625	MINNEAPOLIS CENTER 127.75 257.7	UNICOM 123.0 (CTAF)
------------------------	---	-------------------------------



ELEV 1339	TDZE 1339
-----------	-----------



CATEGORY	A	B	C	D
LPV DA	1539-½		200 (200-½)	
LNAV/VNAV DA	1590-½		251 (300-½)	
LNAV MDA	1700-½ 361 (400-½)		1700-⅝ 361 (400-⅝)	
CIRCLING	1760-1 421 (500-1)	1800-1 461 (500-1)	2100-2¼ 761 (800-2¼)	2100-2½ 761 (800-2½)

REIL Rwy 18, 30 and 36
MIRL Rwy 12-30 and 18-36

NC-3, 28 NOV 2024 to 26 DEC 2024

NC-3, 28 NOV 2024 to 26 DEC 2024