

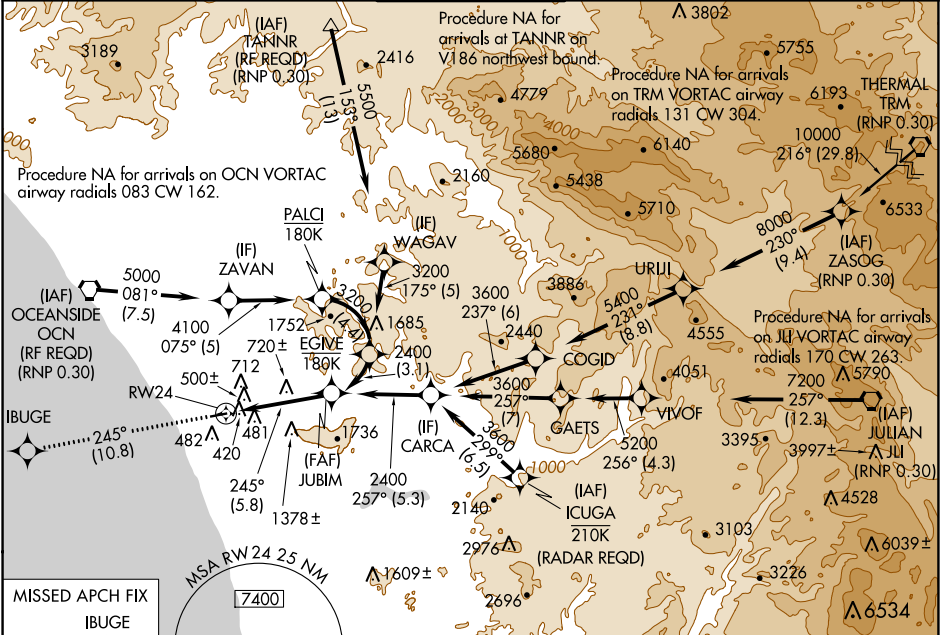
APP CRS <b>245°</b>	Rwy Idg TDZE Apt Elev	<b>4897</b> <b>326</b> <b>331</b>
------------------------	-----------------------------	---

# RNAV (RNP) Z RWY 24

MC CLELLAN-PALOMAR (CRQ)

For uncompensated Baro-VNAV systems, procedure NA below 1°C (34°F) or above 54°C (130°F). For inoperative MALS, increase RNP 0.10 visibility to RVR 6000 all Cats, RNP 0.30 visibility to 1% all Cats. GPS required.	MALS	MISSED APPROACH: Climb to 2000 on track 245° to IBUGE and hold.

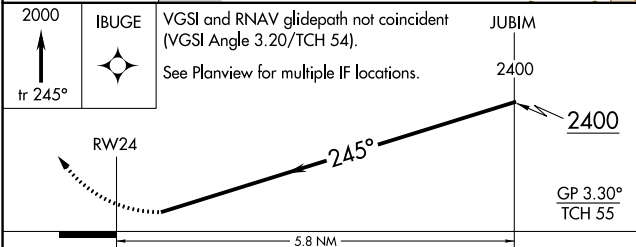
ATIS <b>120.15</b>	SOCAL APP CON <b>127.3 323.0</b>	<b>PALOMAR TOWER*</b> <b>118.6 (CTAF) 0 276.4</b>	GND CON <b>121.8</b>	CLNC DEL <b>134.85</b>
-----------------------	-------------------------------------	--	-------------------------	---------------------------



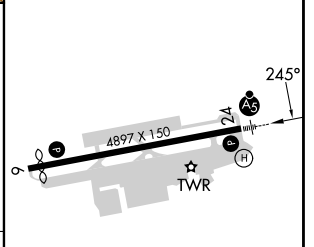
SW-3, 28 NOV 2024 to 26 DEC 2024

SW-3, 28 NOV 2024 to 26 DEC 2024

MISSED APCH FIX IBUGE	
--------------------------	--



ELEV 331	TDZE 326
----------	----------



CATEGORY	A	B	C	D
RNP 0.10 DA	810/50	484 (500-1)		NA
RNP 0.30 DA	931-1 $\frac{3}{8}$	605 (600-1 $\frac{3}{8}$ )		NA

**AUTHORIZATION REQUIRED**

HIRL Rwy 6-24