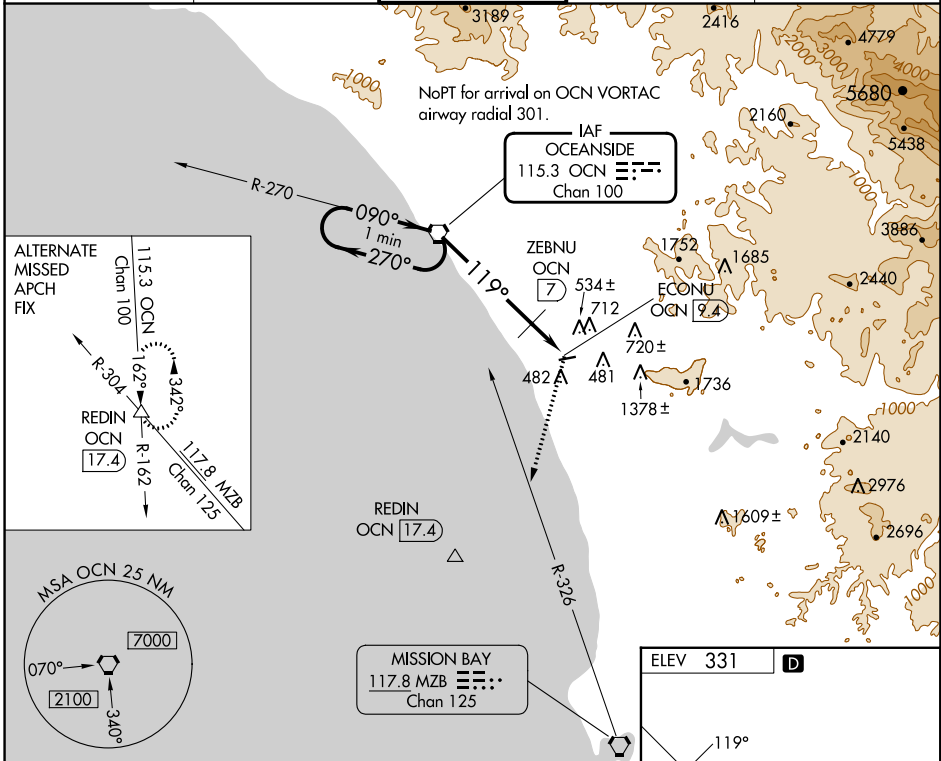


VORTAC OCN 115.3 Chan 100	APP CRS 119°	Rwy Idg TDZE Apt Elev	N/A N/A 331
---	------------------------	-----------------------------	--

VOR-A
MC CLELLAN-PALOMAR (CRQ)

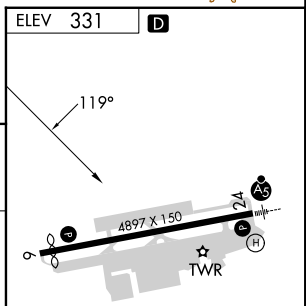
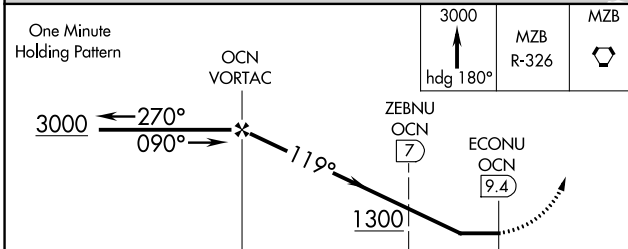
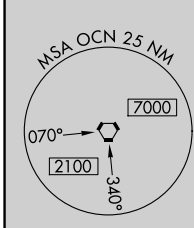
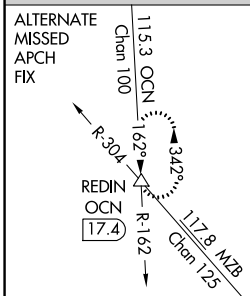
MISSED APPROACH: Climb to 3000 on heading 180° and on MZB R-326 to MZB VORTAC.

ATIS 120.15	SOCAL APP CON 127.3 323.0	PALOMAR TOWER* 118.6 (CTAF) 0 276.4	GND CON 121.8	CLNC DEL 134.85
-----------------------	-------------------------------------	--	-------------------------	---------------------------



SW-3, 28 NOV 2024 to 26 DEC 2024

SW-3, 28 NOV 2024 to 26 DEC 2024



One Minute Holding Pattern	OCN VORTAC	ZEBNU OCN 7	ECONU OCN 9.4	
3000	270°	1300	119°	
090°				
7 NM		2.4 NM		
CATEGORY	A	B	C	D
CIRCLING	1300-1¼ 969 (1000-1¼)	1300-1½ 969 (1000-1½)	1300-3 969 (1000-3)	NA
ZEBNU FIX MINIMUMS				
CIRCLING	920-1 589 (600-1)	1020-1 689 (700-1)	1260-2¾ 929 (1000-2¾)	NA

ELEV 331	D				
HRL Rwy 6-24					
FAF to MAP 9.4 NM					
Knots	60	90	120	150	180
Min:Sec	9:24	6:16	4:42	3:46	3:08