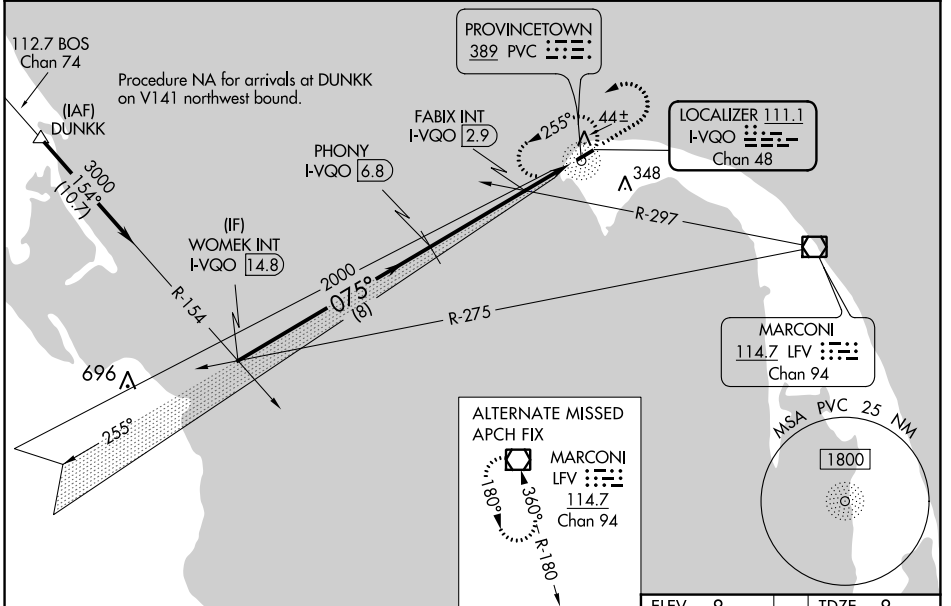


LOC/DME I-VQO <b>111.1</b> Chan 48	APP CRS <b>075°</b>	Rwy Idg <b>3502</b> TDZE <b>8</b> Apt Elev <b>8</b>
--	------------------------	---

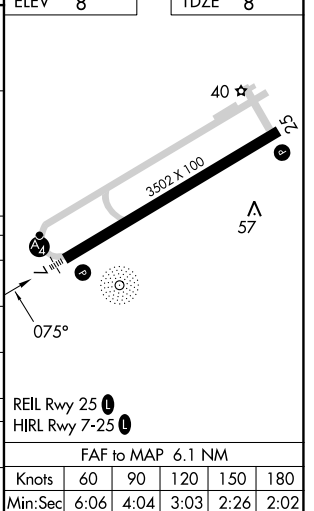
# ILS or LOC RWY 7

PROVINCETOWN MUNI (PVC)

DME required for LOC only, ADF.		MALSF	MISSED APPROACH: Climb to 800 then climbing left turn to 2000 direct PVC NDB and hold, continue climb-in-hold to 2000.
AWOS-3PT <b>119.275</b>	BOSTON APP CON <b>118.2</b>	CLNC DEL <b>120.65</b>	UNICOM <b>122.8</b> (CTAF) <b>122.85</b>



	WOMEK INT I-VQO 14.8	PHONY I-VQO 6.8	FABIX INT I-VQO 2.9	I-VQO 1.5	I-VQO 0.7
	3000	2000	2000	2000	2000
	075°	075°	075°	075°	075°
	8 NM	3.9 NM	1.3 NM	0.9 NM	
CATEGORY	A	B	C	D	
S-ILS 7	208-3/4	200 (200-3/4)		NA	
S-LOC 7	660-3/4	652 (700-3/4)		NA	
CIRCLING	660-1	652 (700-1)		NA	
FABIX FIX MINIMUMS (DUAL VOR RECEIVERS OR DME REQUIRED)					
S-LOC 7	320-3/4	312 (400-3/4)		NA	
CIRCLING	460-1 452 (500-1)	660-1 652 (700-1)		NA	



NE-1, 28 NOV 2024 to 26 DEC 2024

NE-1, 28 NOV 2024 to 26 DEC 2024

REIL Rwy 25	HIRL Rwy 7-25
FAF to MAP 6.1 NM	
Knots	60 90 120 150 180
Min:Sec	6:06 4:04 3:03 2:26 2:02