

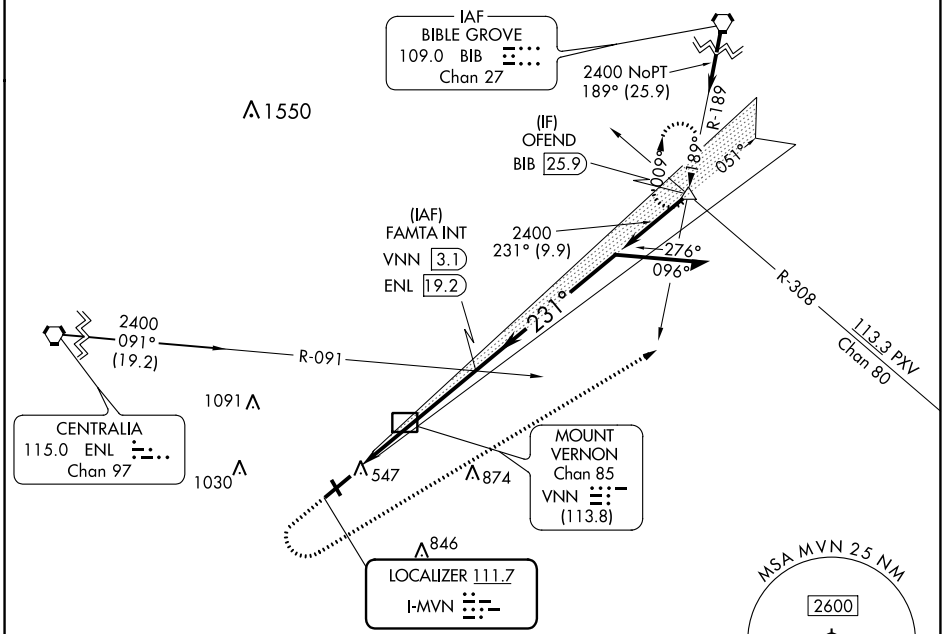
LOC I-MVN <b>111.7</b>	APP CRS <b>231°</b>	Rwy Idg TDZE Apt Elev	<b>5572</b> <b>471</b> <b>480</b>
---------------------------	------------------------	-----------------------------	---

# ILS or LOC RWY 23

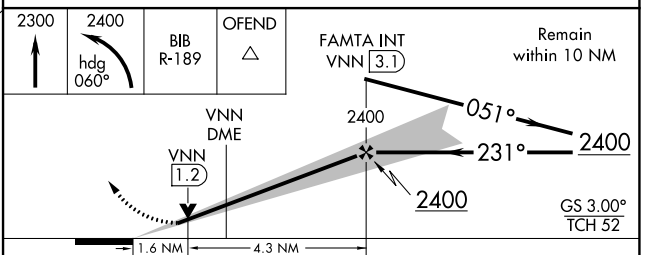
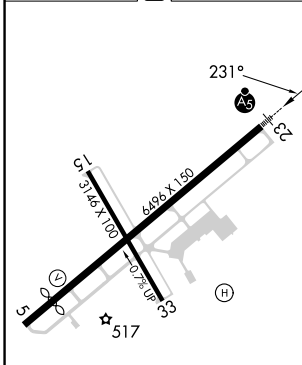
MOUNT VERNON (MVN)

<p><b>⚠</b> Circling Rwy 15, 33 NA at night.</p>	<p><b>MALSR</b></p>	<p><b>MISSED APPROACH:</b> Climb to 2300 then climbing left turn to 2400 on heading 060° and on BIB VORTAC R-189 to OFEND and hold.</p>
--	---------------------	---

AWOS-3PT <b>118.2</b>	KANSAS CITY CENTER <b>127.7 351.825</b>	UNICOM <b>123.0 (CTAF) 0</b>
--------------------------	--	---------------------------------



ELEV 480	<b>D</b>	TDZE 471
----------	----------	----------



HIRL Rwy 5-23	<b>0</b>
MIRL Rwy 15-33	<b>0</b>
FAF to MAP 5.9 NM	
Knots	60 90 120 150 180
Min:Sec	5:54 3:56 2:57 2:22 1:58

CATEGORY	A	B	C	D
S-ILS 23	671-1/2 200 (200-1/2)			
S-LOC 23	1020-1/2	549 (600-1/2)	1020-1 1/8	549 (600-1 1/8)
<b>C</b> CIRCLING	1020-1	540 (600-1)	1140-1 3/4	1380-3
			660 (700-1 3/4)	900 (1000-3)

EC-3, 28 NOV 2024 to 26 DEC 2024

EC-3, 28 NOV 2024 to 26 DEC 2024