

WAAS CH <b>50444</b> <b>W14B</b>	APP CRS <b>139°</b>	Rwy ldg 2991 TDZE 121 Apt Elev 123
--	------------------------	---

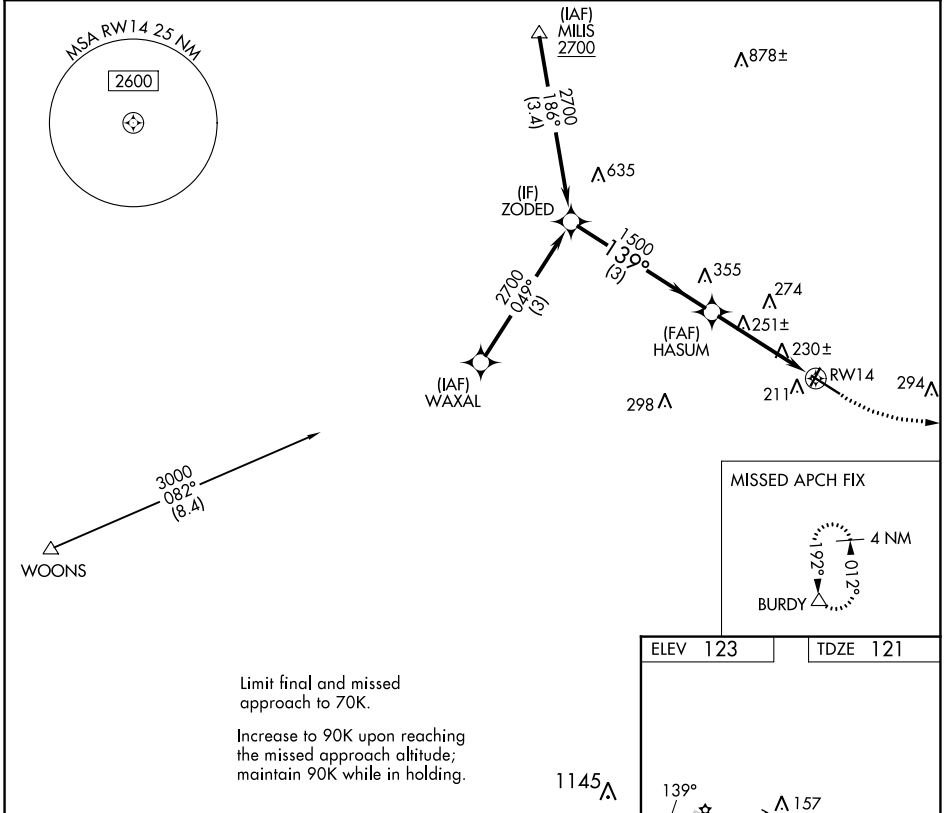
# COPTER RNAV (GPS) Y RWY 14

MANSFIELD MUNI (1B9)

RNP APCH - GPS.  
 Procedure NA at night. Use Taunton altimeter setting.

MISSED APPROACH: Climbing left turn to 2000 direct BURDY and hold.

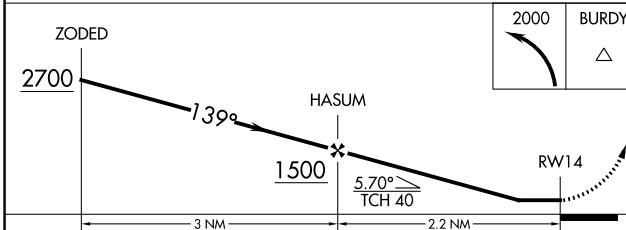
AWOS-3PT <b>118.675</b>	TAN ASOS <b>132.675</b>	BOSTON APP CON <b>124.1</b>	UNICOM <b>123.0 (CTAF)</b>
----------------------------	----------------------------	--------------------------------	-------------------------------



NE-1, 28 NOV 2024 to 26 DEC 2024

NE-1, 28 NOV 2024 to 26 DEC 2024

Limit final and missed approach to 70K.  
 Increase to 90K upon reaching the missed approach altitude; maintain 90K while in holding.



CATEGORY	COPTER	
LP MDA	520-1	399 (400-1)
LNAV MDA	580-1	459 (500-1)

