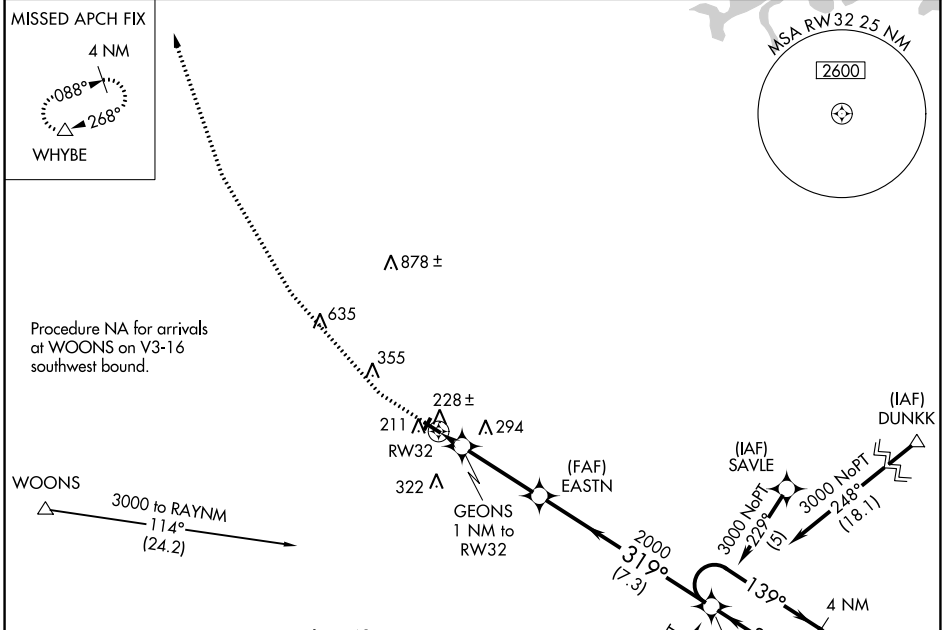


WAAS CH 97644 W32A	APP CRS 319°	Rwy Idg TDZE Apt Elev	3263 121 123
--	------------------------	-----------------------------	---

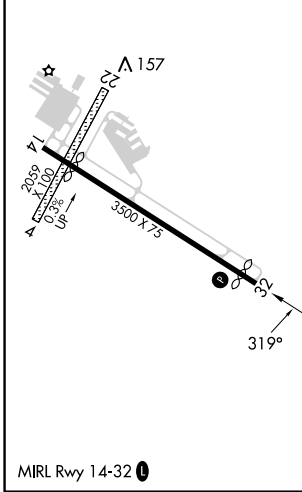
RNAV (GPS) RWY 32

MANSFIELD MUNI (1B9)

RNP APCH - GPS.		MISSED APPROACH: Climb to 700 then climbing right turn to 3000 direct WHYBE and hold.	
<p>NA Circling NA to Rwys 4 and 22. Procedure NA at night. Rwy 32 helicopter visibility reduction below 1 SM NA. Use Taunton altimeter setting.</p>			
AWOS-3PT 118.675	TAN ASOS 132.675	BOSTON APP CON 124.1	UNICOM 123.0 (CTAF)

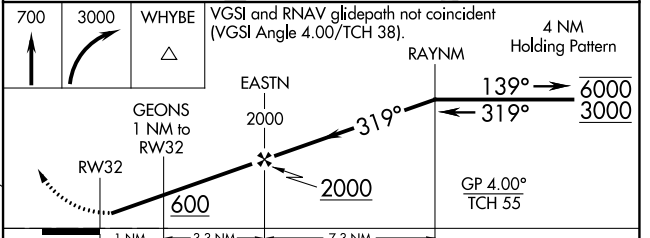


ELEV 123	TDZE 121
----------	----------



Procedure NA for arrivals at AVONN on V146 northwest bound.

AVONN → (IAF) REPOY → (IF/IAF) RAYNM → HOLD 6000/3000



CATEGORY	A	B	C	D
LPV DA	452-1	331 (400-1)		NA
LNAV MDA	520-1	399 (400-1)		NA
C CIRCLING	600-1 477 (500-1)	640-1 517 (600-1)		NA

NE-1, 28 NOV 2024 to 26 DEC 2024

NE-1, 28 NOV 2024 to 26 DEC 2024