

WAAS CH 86211 W23A	APP CRS 232°	Rwy Idg 6001 TDZE 723 Apt Elev 727
--	------------------------	---

RNAV (GPS) RWY 23

WAUKEGAN NTL (UGN)

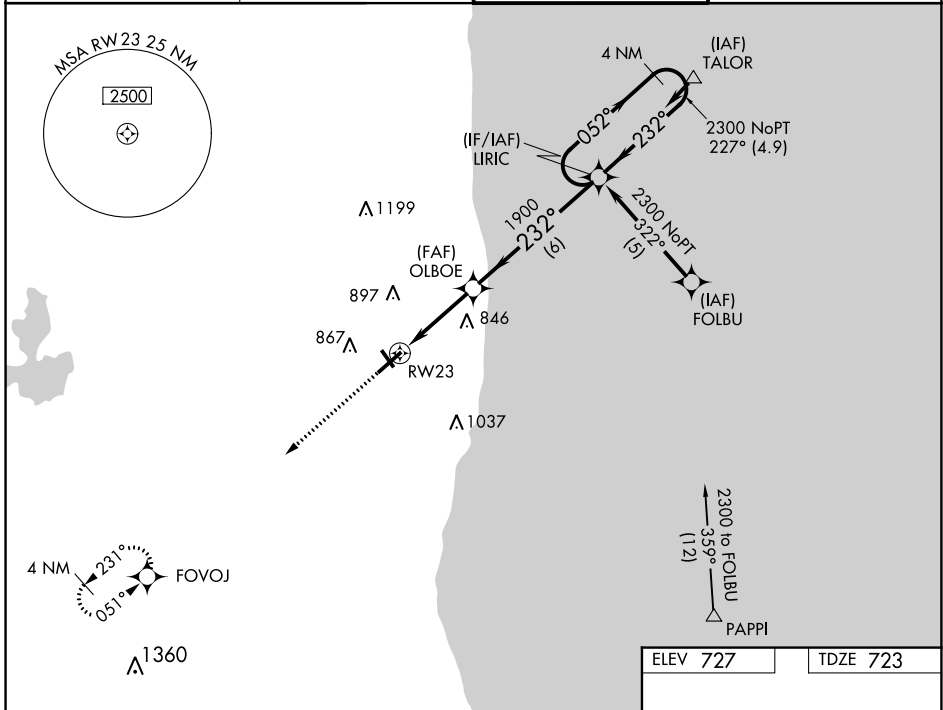
⚠ Circling to Rwy 14, 32 NA at night. For uncompensated Baro-VNAV systems, LNAV/VNAV NA below -16° C (4° F) or above 54°C (130°F). DME/DME RNP-0.3 NA. For inoperative ALS, increase LNAV/VNAV all Cats visibility to ½ SM.

MALSR



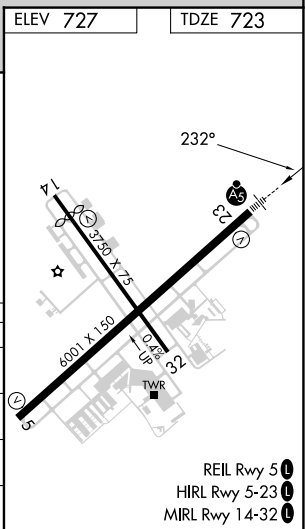
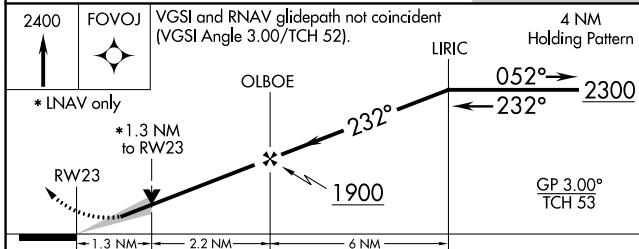
MISSED APPROACH: Climb to 2400 direct FOVOJ and hold.

ATIS 132.4	CHICAGO APP CON 120.55	WAUKEGAN TOWER ★ 120.05 (CTAF) 0 273.55	GND CON 121.65
----------------------	----------------------------------	---	--------------------------



EC-3, 28 NOV 2024 to 26 DEC 2024

EC-3, 28 NOV 2024 to 26 DEC 2024



CATEGORY	A	B	C	D
LPV DA	980-½ 257 (300-½)			
LNAV/VNAV DA	1020-½ 297 (300-½)		1020-¾ 297 (300-¾)	
LNAV MDA	1160-½ 437 (500-½)	1160-¾ 437 (500-¾)	1160-1 437 (500-1)	1160-1 437 (500-1)
CIRCLING	1220-1 493 (500-1)	1220-½ 493 (500-½)	1400-2¼ 673 (700-2¼)	1400-2¼ 673 (700-2¼)

- REIL Rwy 5
- HIRL Rwy 5-23
- MIRL Rwy 14-32