

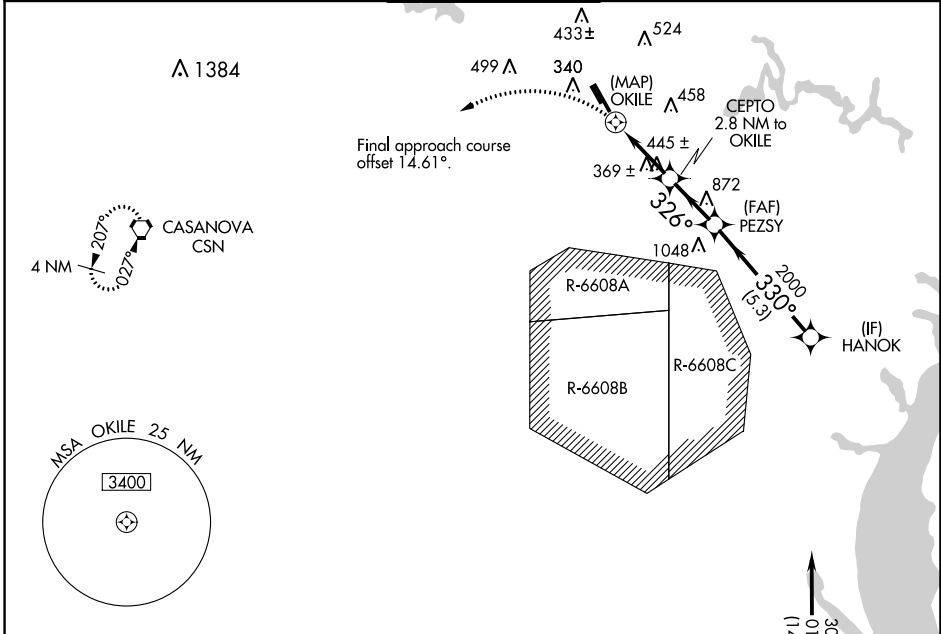
WAAS CH 63130 W34A	APP CRS 326°	Rwy Idg TDZE Apt Elev	6200 178 192
--	------------------------	-----------------------------	---

RNAV (GPS) RWY 34R

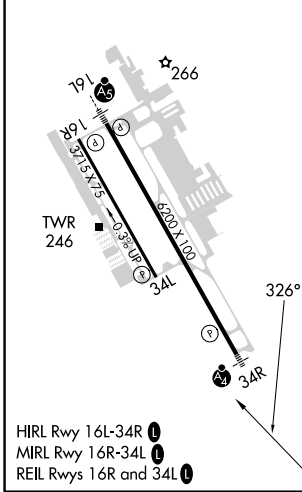
MANASSAS RGNL/HARRY P DAVIS FLD (HEF)

RNP APCH. ▼ Rwy 34R helicopter visibility reduction below 3/4 SM NA. For inop ALS, increase LP and LNAV Cats C/D visibility to 1 3/8 SM. ▲	MALSF [Symbol]	MISSED APPROACH: Climbing left turn to 3000 direct CSN VORTAC and hold.
--	-------------------	---

ATIS 125.175	POTOMAC APP CON 128.525 306.925	MANASSAS TOWER ★ 133.1 (CTAF) 360.75	GND CON 121.8	CLNC DEL 120.2
------------------------	---	--	-------------------------	--------------------------



ELEV 192	TDZE 178
-----------------	-----------------



3000	CSN	HANOK			
3000	CSN	CEPTO 2.8 NM to OKILE	PEZSY	HANOK 3000	
		1 NM to OKILE	326°	2000	330°
		OKILE	1260	TCH 40	
		0.5	1 NM	1.8 NM	2.3 NM
CATEGORY	A	B	C	D	
LP MDA	620-1 442 (500-1)				
LNAV MDA	640-1	462 (500-1)	640-1 1/8	462 (500-1 1/8)	
CIRCLING	700-1	740-1	840-1 3/4	920-2 1/4	
	508 (600-1)	548 (600-1)	648 (700-1 1/4)	728 (800-2 1/4)	

NE-3, 28 NOV 2024 to 26 DEC 2024

NE-3, 28 NOV 2024 to 26 DEC 2024