

WAAS CH 77800 W09A	APP CRS 092°	Rwy Idg TDZE Apt Elev	5600 418 452
--	------------------------	-----------------------------	---

RNAV (GPS) RWY 9

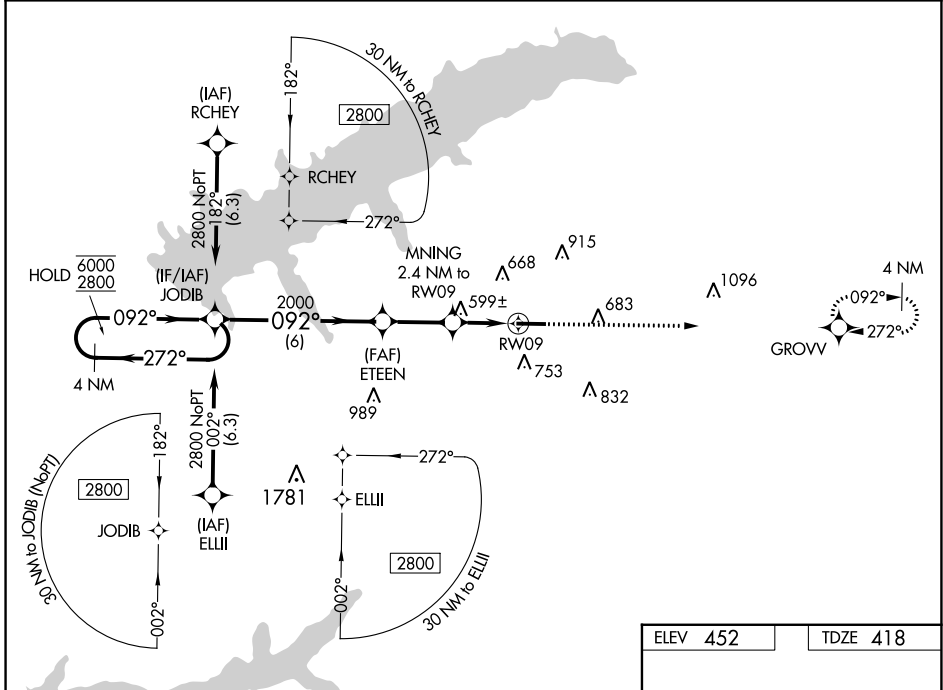
UNIVERSITY-OXFORD (UOX)

RNP APCH - GPS.

▼ For uncompensated Baro-VNAV systems, UNAV/VNAV NA below -15°C or above 54°C.

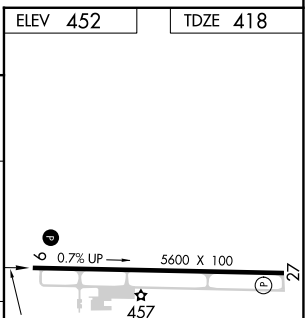
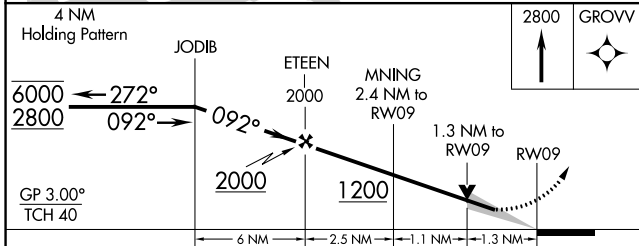
▲ MISSED APPROACH: Climb to 2800 direct GROVV and hold.

AWOS-3PT 132.725	MEMPHIS CENTER 128.5 279.55	GCO 135.075	UNICOM 123.0 (CTAF) 0
----------------------------	---------------------------------------	-----------------------	---------------------------------



SC-4, 28 NOV 2024 to 26 DEC 2024

SC-4, 28 NOV 2024 to 26 DEC 2024



CATEGORY	A	B	C	D
LPV DA	618- ³ / ₄ 200 (200- ³ / ₄)			
LNAV/VNAV DA	940- ¹ / ₂ 522 (500- ¹ / ₂)	940-1 ¹ / ₂ 522 (500-1 ¹ / ₂)		
LNAV MDA	860-1 442 (500-1)	860-1 ³ / ₈ 442 (500-1 ³ / ₈)		
CIRCLING	980-1 528 (600-1)	1060-1 608 (700-1)	1380-2 ³ / ₄ 928 (1000-2 ³ / ₄)	1380-3 928 (1000-3)

ELEV 452 TDZE 418

MIRL Rwy 9-27 0
REIL Rwy 9 and 27 0