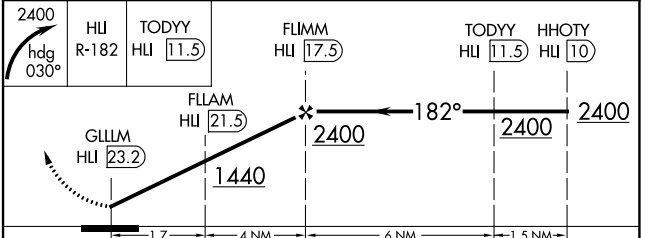
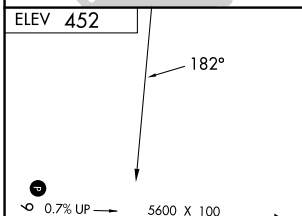
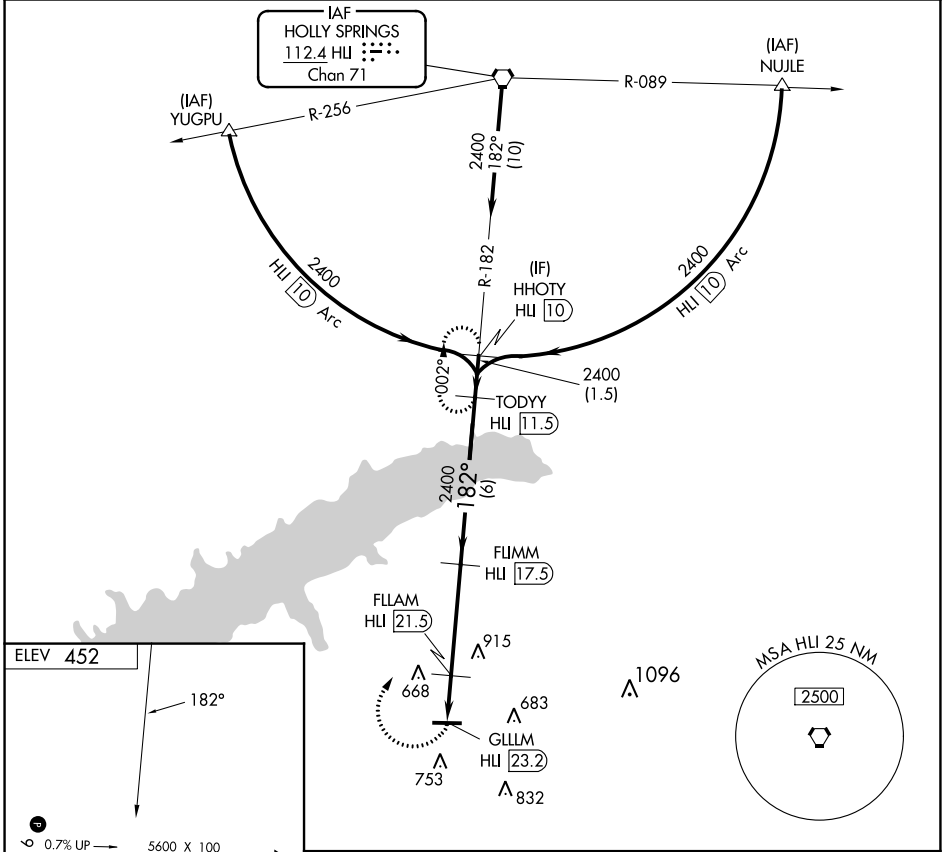


VORTAC HLI 112.4 Chan 71	APP CRS 182°	Rwy Idg TDZE Apt Elev	N/A N/A 452
--	------------------------	-----------------------------	--

VOR-A
UNIVERSITY-OXFORD (UOX)

DME required.		MISSED APPROACH: Climbing right turn to 2400 on heading 030° and on HLI R-182 to TODAYY/HLI 11.5 DME and hold.	
---------------	--	--	--

AWOS-3PT 132.725	MEMPHIS CENTER 128.5 279.55	GCO 135.075	UNICOM 123.0 (CTAF)
----------------------------	---------------------------------------	-----------------------	-------------------------------



CATEGORY	A	B	C	D
CIRCLING	980-1 528 (600-1)	1060-1¼ 608 (700-1¼)	1380-2¾ 928 (1000-2¾)	1380-3 928 (1000-3)

MIRL Rwy 9-27
REIL Rwy 9 and 27

34°23'N-89°32'W

UNIVERSITY-OXFORD (UOX)
VOR-A

SC-4, 28 NOV 2024 to 26 DEC 2024

SC-4, 28 NOV 2024 to 26 DEC 2024