

WAAS CH 42724 W24A	APP CRS 239°	Rwy Idg 2666 TDZE 670 Apt Elev 670
--	------------------------	---

RNAV (GPS) RWY 24

BUFFALO AIRFIELD (9G~~0~~)

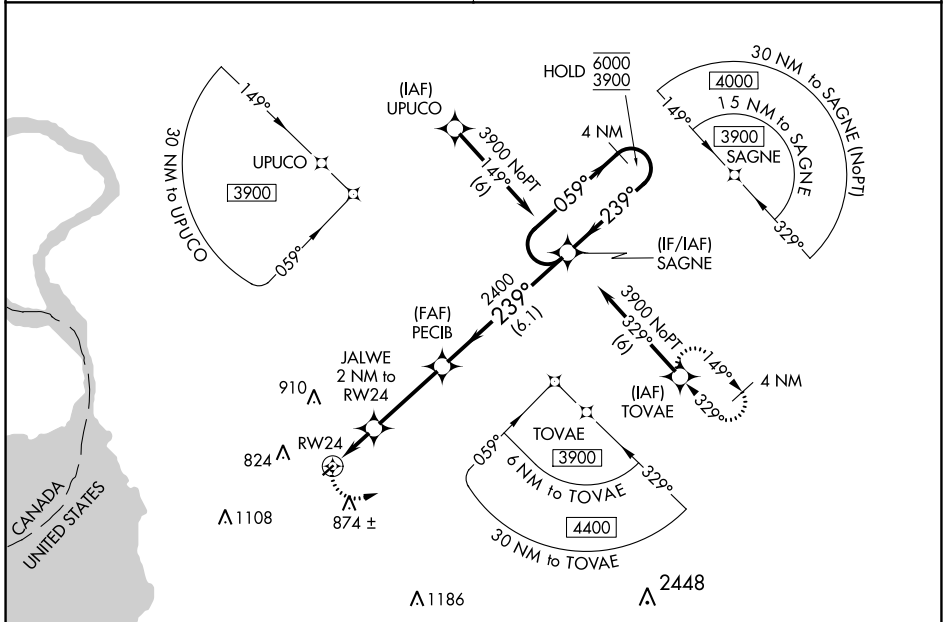
RNP APCH.

Procedure NA at night. Rwy 24 helicopter visibility reduction below 1 SM NA.
 Use Buffalo Niagara Intl altimeter setting.

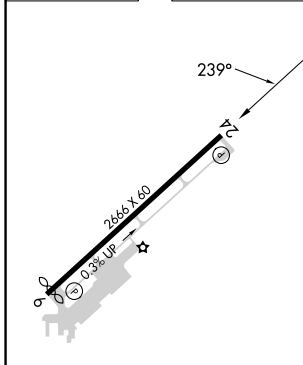
MISSED APPROACH: Climbing left turn to 3900 direct TOVAE and hold.

BUFFALO APP CON **126.15 263.125**

UNICOM **122.975 (CTAF)**



ELEV 670	TDZE 670
----------	----------



3900	TOVAE	Visual Segment - Obstacles.		4 NM Holding Pattern
		JALWE 2 NM to RW24	PECIB	SAGNE
		RW24	2400	6000 3900
		2 NM	3.3 NM	6.1 NM
CATEGORY	A	B	C	D
LP MDA	1160-1	490 (500-1)	NA	
LNAV MDA	1160-1	490 (500-1)	NA	

REIL Rwy 6 and 24
 MIRL Rwy 6-24

NE-2, 28 NOV 2024 to 26 DEC 2024

NE-2, 28 NOV 2024 to 26 DEC 2024