

# CONRA THREE DEPARTURE

SC-3, 28 NOV 2024 to 26 DEC 2024

**DEPARTURE ROUTE DESCRIPTION**

**TAKEOFF RUNWAY 1:** Climb on assigned heading for RADAR vectors to CONRA INT, maintain 3500. Thence. . . .

**TAKEOFF RUNWAY 19:** Climb on heading 192° to 1900 before turning east. Then climb on assigned heading for RADAR vectors to CONRA INT, maintain 3500. Thence. . . .

. . . .(transition), expect filed altitude 10 minutes after departure.

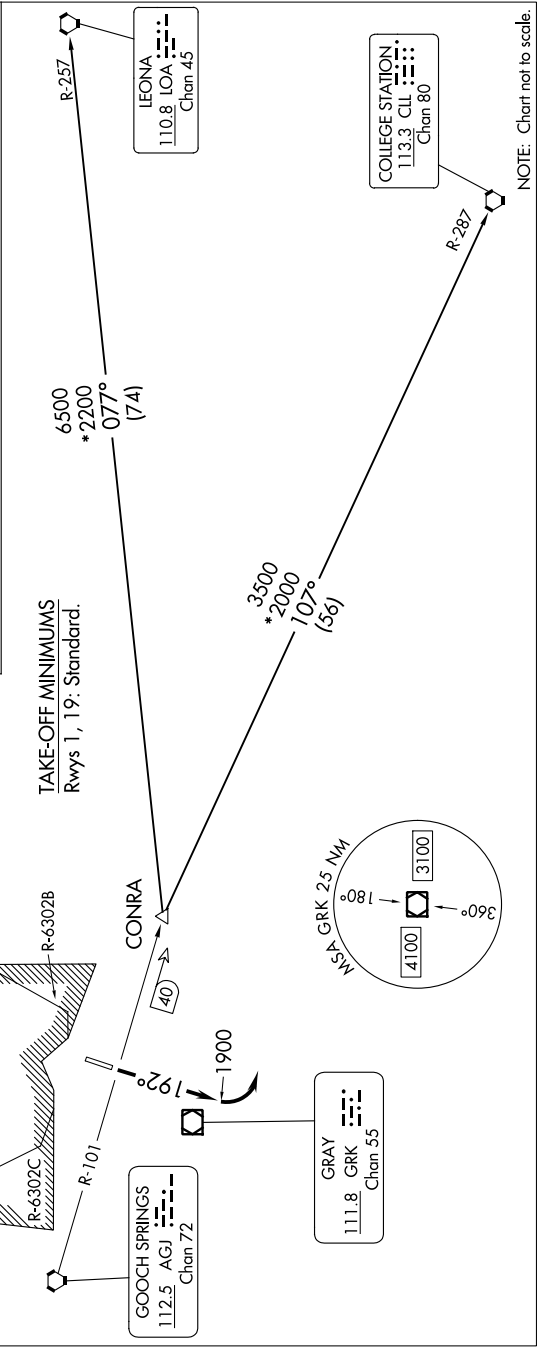
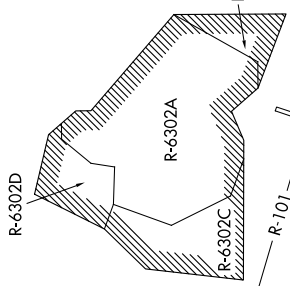
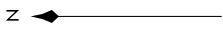
**COLLEGE STATION TRANSITION (CONRA3.CLI):** From over CONRA INT on CLL R-287 to CLL VORTAC.

**LEONA TRANSITION (CONRA3.LOA):** From over CONRA INT on LOA R-257 to LOA VORTAC.

RADAR required.

**TOP ALTITUDE:**  
3500

AWOS-3PT  
128.575  
CLNC DEL  
121.7  
CTAF  
122.7  
GRAY DEP CON  
120.075 323.15



NOTE: Chart not to scale.

# CONRA THREE DEPARTURE

SC-3, 28 NOV 2024 to 26 DEC 2024