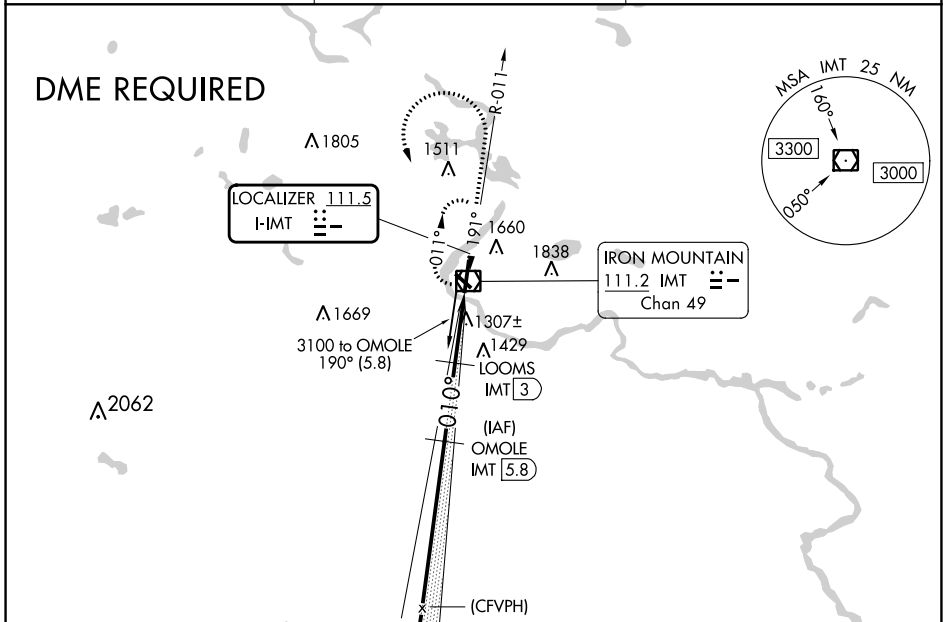


LOC I-IMT <b>111.5</b>	APP CRS <b>010°</b>	Rwy Idg <b>6502</b>
		TDZE <b>1133</b>
		Apt Elev <b>1182</b>

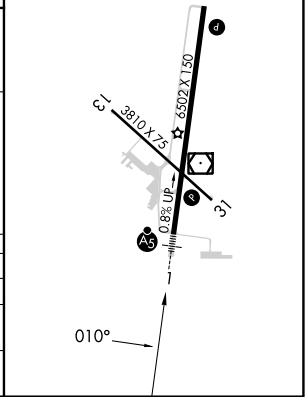
# ILS or LOC RWY 1 FORD (IMT)

<p><b>NA</b> Circling NA NE of Rws 19 and 31. DME required. DME from IMT VOR/DME. Simultaneous reception of I-IMT and IMT DME required. Circling Rwy 13, 19, 31 NA at night.</p>	<p><b>MALSR</b></p>	<p><b>MISSED APPROACH:</b> Climb to 2200 then climbing left turn to 3100 direct IMT VOR/DME and hold.</p>

<b>ASOS</b> <b>119.025</b>	<b>MINNEAPOLIS CENTER</b> <b>121.25 322.5</b>	<b>UNICOM</b> <b>122.8 (CTAF) 1</b>
-------------------------------	--	--



ELEV 1182	<b>D</b>	TDZE 1133
MIRL Rwy 13-31	<b>1</b>	
HIRL Rwy 1-19	<b>1</b>	
REIL Rws 19 and 31	<b>1</b>	



CATEGORY	A	B	C	D
S-ILS 1	1333-½		200 (200-½)	
S-LOC 1	1720-½	587 (600-½)	1720-1¼	587 (600-1¼)
<b>C</b> CIRCLING	1720-1 538 (600-1)	1780-1 598 (600-1)	1780-1¾ 598 (600-1¾)	1840-2 658 (700-2)

EC-1, 28 NOV 2024 to 26 DEC 2024

EC-1, 28 NOV 2024 to 26 DEC 2024