

APP CRS **190°**
 Rwy Idg **6376**
 TDZE **1182**
 Apt Elev **1182**

RNAV (GPS) RWY 19

FORD (IMT)

RNP APCH-GPS.

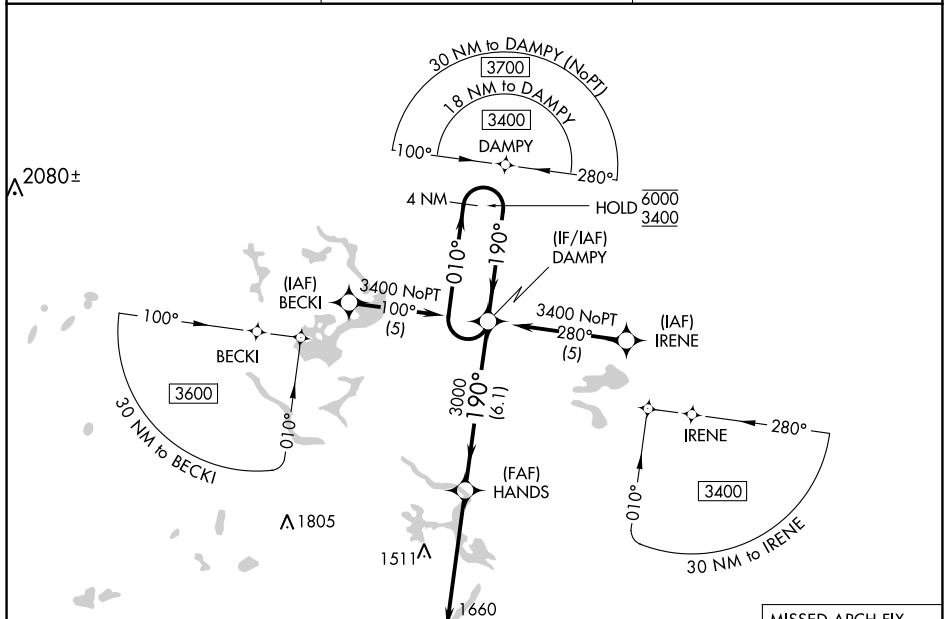
MISSED APPROACH:
 Climb to 3400 direct
 SEYOC and hold.

- ▼ Circling NA northeast of Rwy 19 and 31. Rwy 19 helicopter visibility reduction below 1 SM NA.
- ▲ Straight-in Rwy 19 NA at night, Circling Rwy 13, 19, 31 NA at night.

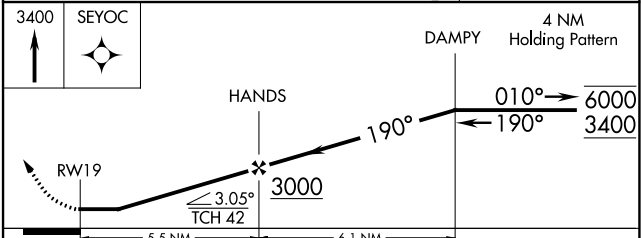
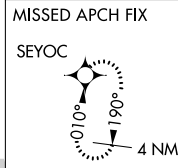
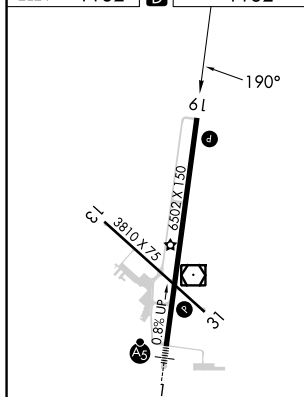
ASOS
119.025

MINNEAPOLIS CENTER
121.25 322.5

UNICOM
122.8 (CTAF) 0



ELEV **1182** **D** TDZE **1182**



CATEGORY	A	B	C	D
LNAV MDA	1760-1	578 (600-1)	1760-1½	578 (600-1½)
C CIRCLING	1760-1 578 (600-1)	1780-1 598 (600-1)	1780-1½ 598 (600-1½)	1840-2 658 (700-2)

MIRL Rwy 13-31 **0**
 HIRL Rwy 1-19 **0**
 REL Rwy 19 and 31 **0**

EC-1, 28 NOV 2024 to 26 DEC 2024

EC-1, 28 NOV 2024 to 26 DEC 2024