

(BNGOS4.BNGOS) 24137

AL-5349 (FAA)

MIAMI EXEC (TMB)
MIAMI, FLORIDA

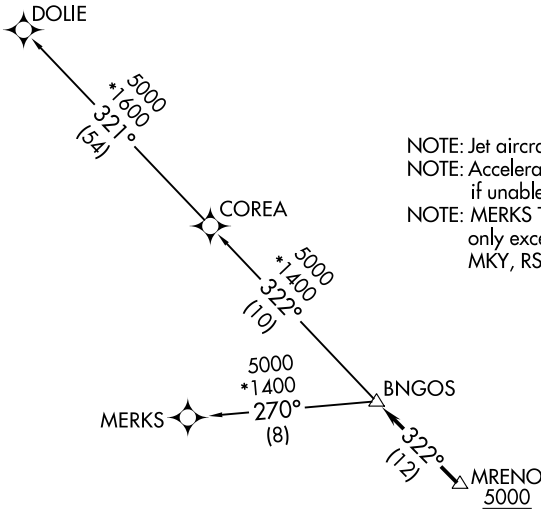
BNGOS FOUR DEPARTURE (RNAV)

RNAV-1 DME/DME/IRU or GPS.

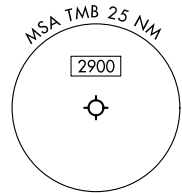
RADAR required.

**TOP ALTITUDE:
ASSIGNED BY ATC**

MIAMI DEP CON
125.5 354.1
ATIS
124.0
CLNC DEL
133.0
GND CON
121.7
MIAMI EXEC TOWER*
118.9 (CTAF)

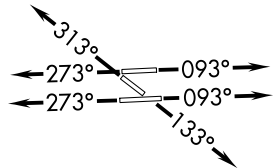


NOTE: Jet aircraft only.
NOTE: Accelerate to 250K until leaving 10000, if unable, advise ATC.
NOTE: MERKS Transition ATC assigned only except aircraft landing: MKY, RSW, APF, PGD and FMY.



TAKEOFF MINIMUMS

- Rwy 9L: Standard with minimum climb of 500'/NM to 1300.
- Rwy 9R: Standard with minimum climb of 500'/NM to 1500.
- Rwy 13: Standard with minimum climb of 500'/NM to 1800.
- Rwy 27L: Standard with minimum climb of 500'/NM to 1900.
- Rwy 27R: Standard with minimum climb of 500'/NM to 1700.
- Rwy 31: Standard with minimum climb of 500'/NM to 1400.



NOTE: Chart not to scale.



DEPARTURE ROUTE DESCRIPTION

TAKEOFF RUNWAYS 9L/R: Climb on heading 093° or as assigned by ATC for RADAR vectors to cross MRENO at or above 5000, thence. . .

TAKEOFF RUNWAY 13: Climb on heading 133° or as assigned by ATC for RADAR vectors to cross MRENO at 5000, thence. . .

TAKEOFF RUNWAYS 27L/R: Climb on heading 273° or as assigned by ATC for RADAR vectors to cross MRENO at or above 5000, thence. . .

TAKEOFF RUNWAY 31: Climb on heading 313° or as assigned by ATC for RADAR vectors to cross MRENO at or above 5000, thence. . .

. . . on track 322° to BNGOS, then on assigned transition, maintain ATC assigned altitude, expect filed altitude within 10 minutes after departure.

- COREA TRANSITION (BNGOS4.COREA)
- DOLIE TRANSITION (BNGOS4.DOLIE)
- MERKS TRANSITION (BNGOS4.MERKS)

BNGOS FOUR DEPARTURE (RNAV)
(BNGOS4.BNGOS) 21MAR24

MIAMI, FLORIDA
MIAMI EXEC (TMB)

SE-3, 28 NOV 2024 to 26 DEC 2024