

MAYNR THREE DEPARTURE (RNAV)  
(MAYNR3.MAYNR) 31OCT24

MIAMI DEP CON  
125.5 354.1  
ATIS  
124.0  
CLNC DEL  
133.0  
GND CON  
121.7  
MIAMI EXEC TOWER ★  
118.9 (CTAF)

RNAV 1 - DME/DME/IRU or GPS.  
From SLIPT to MAXIM: RNAV 1 - GPS.  
From SLIPT to CANOA: RNAV 1 - GPS.  
RADAR required for non-GPS equipped aircraft.  
RADAR required.

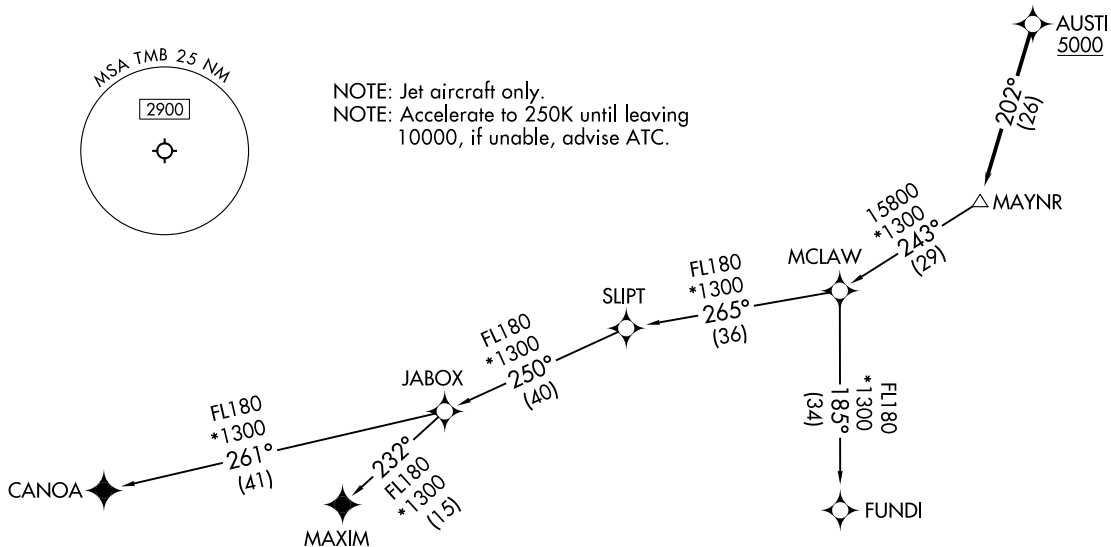
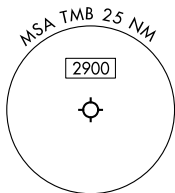
**TOP ALTITUDE:  
ASSIGNED BY ATC**

(MAYNR3.MAYNR) 24305  
MAYNR THREE DEPARTURE (RNAV)  
AI-5349 (FAA)

**TAKEOFF MINIMUMS**

- Rwy 9L: Standard with minimum climb of 500'/NM to 1300.
- Rwy 9R: Standard with minimum climb of 500'/NM to 1500.
- Rwy 13: Standard with minimum climb of 500'/NM to 1800.
- Rwy 27L: Standard with minimum climb of 500'/NM to 1900.
- Rwy 27R: Standard with minimum climb of 500'/NM to 1700.
- Rwy 31: Standard with minimum climb of 500'/NM to 1400.

NOTE: Jet aircraft only.  
NOTE: Accelerate to 250K until leaving  
10000, if unable, advise ATC.



NOTE: Chart not to scale.

(CONTINUED ON FOLLOWING PAGE)

MIAMI EXEC (TMB)  
MIAMI, FLORIDA

MIAMI EXEC (TMB)  
MIAMI, FLORIDA

# MAYNR THREE DEPARTURE (RNAV)



## DEPARTURE ROUTE DESCRIPTION

TAKEOFF RUNWAYS 9L/R, 13, 27L/R, 31: Climb on heading assigned by ATC for vectors to cross AUSTI at or above 5000, thence. . . .

. . . .on track 202° to MAYNR, then on assigned transition, maintain ATC assigned altitude. Expect clearance to filed altitude within 10 minutes after departure.

CANOA TRANSITION (MAYNR3.CANOA)

FUNDI TRANSITION (MAYNR3.FUNDI)

MAXIM TRANSITION (MAYNR3.MAXIM)

SE-3, 28 NOV 2024 to 26 DEC 2024

SE-3, 28 NOV 2024 to 26 DEC 2024