

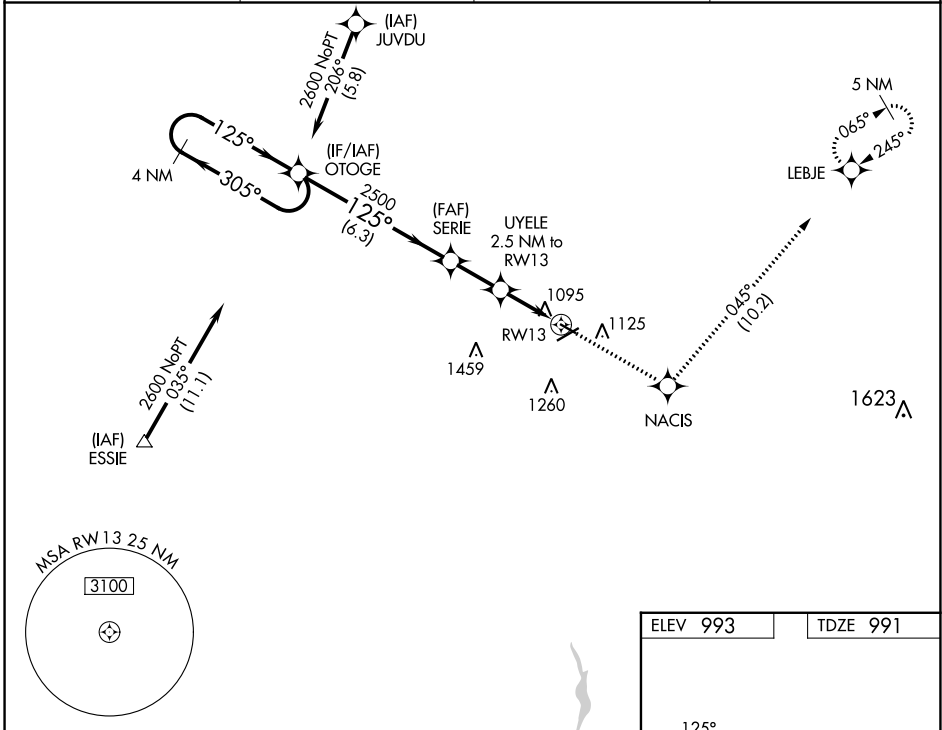
APP CRS	Rwy Idg	<b>3498</b>
<b>125°</b>	TDZE	<b>991</b>
	Apt Elev	<b>993</b>

# RNAV (GPS) RWY 13

MARION MUNI (MNN)

RNP APCH.	MISSED APPROACH: Climb to 3000 direct NACIS and on track 045° to LEBJE and hold.
<p>▼ Rwy 13 helicopter visibility reduction below ¾ SM NA. VDP NA when using Ohio State University altimeter setting. When local altimeter setting not received, use Ohio State University altimeter setting: increase all MDAs 100 feet and visibility Cat C/D ¾ SM.</p>	

ASOS <b>119.975</b>	CLEVELAND APP CON * <b>128.35 360.65</b>	CLNC DEL <b>126.8</b>	UNICOM <b>122.8</b> (CTAF) <b>0</b>
------------------------	---	--------------------------	--



EC-2, 28 NOV 2024 to 26 DEC 2024

EC-2, 28 NOV 2024 to 26 DEC 2024

VGSIs and descent angles not coincident (VGSIs Angle 3.00/TCH 21).		3000	NACIS	tr 045°	LEBJE
4 NM Holding Pattern OTOGE		SERIE		UYELE 2.5 NM to RWY13	
2600 ← 305° → 125°		2500 3.04° TCH 40		1.1 NM to RWY13	
6.3 NM		2.1 NM		1.4 NM	
1800		1.1		RWY13	
CATEGORY	A	B	C	D	
LNVA MDA	1360-1 369 (400-1)		1360-1¼ 369 (400-1¼)		
CIRCLING	1480-1 487 (500-1)	1500-1 507 (600-1)	1700-2 707 (800-2)	1820-2¾ 827 (900-2¾)	
REIL Rwy 7, 13, 25 and 31 <b>0</b> MRL Rwy 7-25 and 13-31 <b>0</b>					

