

WAAS CH <b>90206</b> <b>W24A</b>	APP CRS <b>236°</b>	Rwy Idg <b>5006</b> TDZE <b>308</b> Apt Elev <b>310</b>
--	------------------------	---

# RNAV (GPS) RWY 24

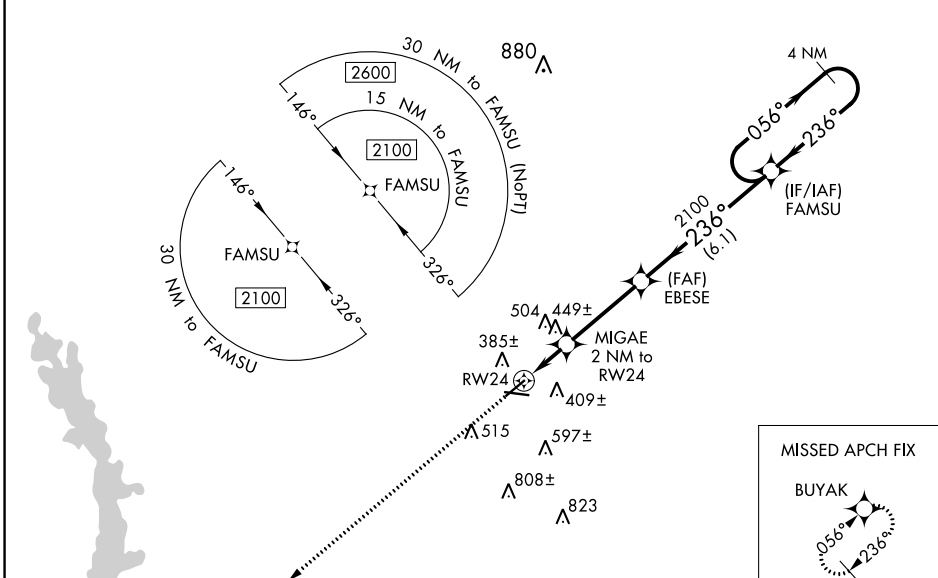
CRISP COUNTY-CORDELE (CKF)

RNP APCH-GPS.

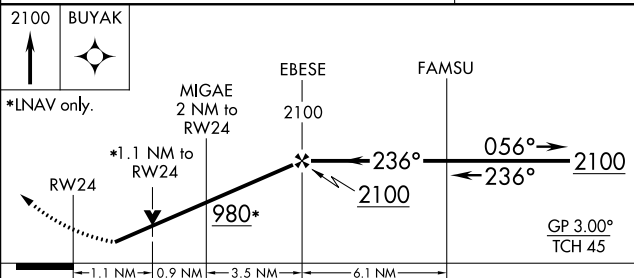
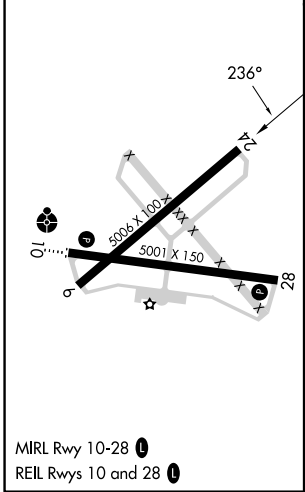
**⚠** For uncompensated Baro-VNAV systems, LNAV/VNAV NA below -15°C or above 54°C. Rwy 24 helicopter visibility reduction below 3/4 SM NA. Straight-in Rwy 24 NA at night, Circling Rwy 6, 24, 28 NA at night.

MISSED APPROACH: Climb to 2100 direct BUYAK and hold.

AWOS-3PT <b>119,325</b>	JACKSONVILLE CENTER <b>125.75 363,075</b>	UNICOM <b>123,050 (CTAF) 0</b>
----------------------------	--	-----------------------------------



ELEV <b>310</b>	TDZE <b>308</b>
-----------------	-----------------



CATEGORY	A	B	C	D
LPV DA		583-1	275 (300-1)	
LNAV/VNAV DA		584-1	276 (300-1)	
LNAV MDA	700-1	392 (400-1)	700-1 1/8	392 (400-1 1/8)
<b>C</b> CIRCLING	820-1	510 (600-1)	1080-2 1/4 770 (800-2 1/4)	1160-2 3/4 850 (900-2 3/4)

SE-4, 28 NOV 2024 to 26 DEC 2024

SE-4, 28 NOV 2024 to 26 DEC 2024