

WAAS CH <b>99305</b>	APP CRS <b>284°</b>	Rwy Idg <b>5001</b> TDZE <b>309</b> Apt Elev <b>310</b>
<b>W28A</b>		

# RNAV (GPS) RWY 28

CRISP COUNTY-CORDELE (CKF)

RNP APCH-GPS.

⚠ For uncompensated Baro-VNAV systems, LNAV/VNAV NA below -1.5°C or above 54°C. Rwy 28 helicopter visibility reduction below 1 SM NA. Straight-in and Circling Rwy 28 NA at night.

MISSED APPROACH: Climb to 2000 direct BAVCA and hold.

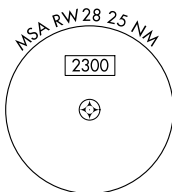
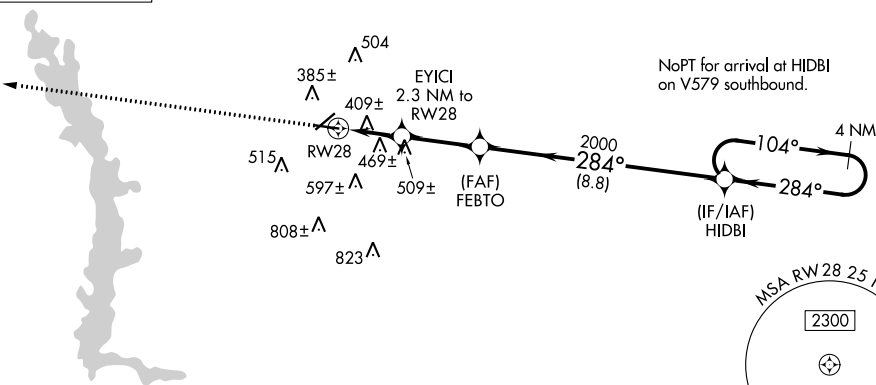
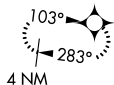
AWOS-3PT  
**119.325**

JACKSONVILLE CENTER  
**125.75 363.075**

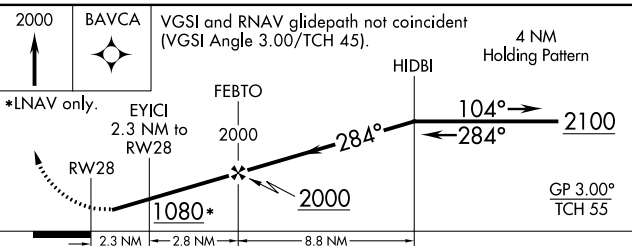
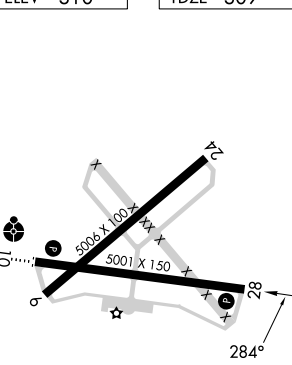
UNICOM  
**123.050 (CTAF) ①**

△ 833±

MISSED APCH FIX  
BAVCA



ELEV 310	TDZE 309
----------	----------



	CATEGORY	A	B	C	D
LPV	DA	669-1 <sup>1</sup> / <sub>8</sub> 360 (400-1 <sup>1</sup> / <sub>8</sub> )			
LNAV/VNAV	DA	769-1 <sup>1</sup> / <sub>2</sub> 460 (500-1 <sup>1</sup> / <sub>2</sub> )			
LNAV	MDA	720-1	411 (500-1)	720-1 <sup>1</sup> / <sub>8</sub>	411 (500-1 <sup>1</sup> / <sub>8</sub> )
<input checked="" type="checkbox"/> CIRCLING		820-1	510 (600-1)	1080-2 <sup>1</sup> / <sub>4</sub> 770 (800-2 <sup>1</sup> / <sub>4</sub> )	1160-2 <sup>3</sup> / <sub>4</sub> 850 (900-2 <sup>3</sup> / <sub>4</sub> )

MIRL Rwy 10-28 ①  
REIL Rwy 10 and 28 ①

SE-4, 28 NOV 2024 to 26 DEC 2024

SE-4, 28 NOV 2024 to 26 DEC 2024