

NDB BMW <b>404</b>	APP CRS <b>312°</b>	Rwy Idg TDZE Apt Elev	<b>4600</b> <b>922</b> <b>934</b>
-----------------------	------------------------	-----------------------------	---

# NDB RWY 31

BARROW COUNTY (WDR)

**⚠** For inop ALS, increase S-31 Cat A/B visibility to 1 SM. Circling Rwy 13, 23 NA at night. Rwy 31 helicopter visibility reduction below  $\frac{3}{4}$  SM NA.

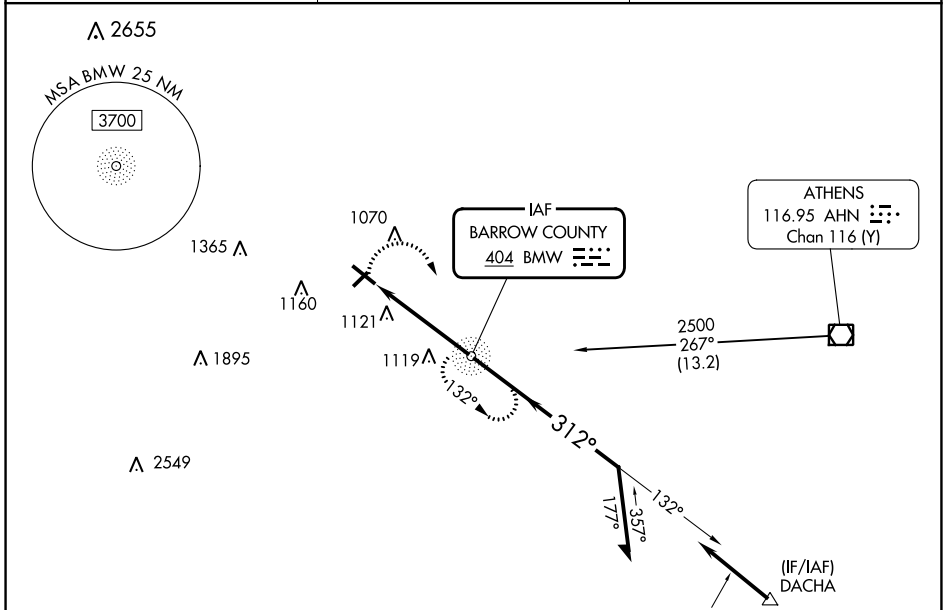
MALSR

MISSED APPROACH: Climbing right turn to 2500 direct BMW NDB and hold.

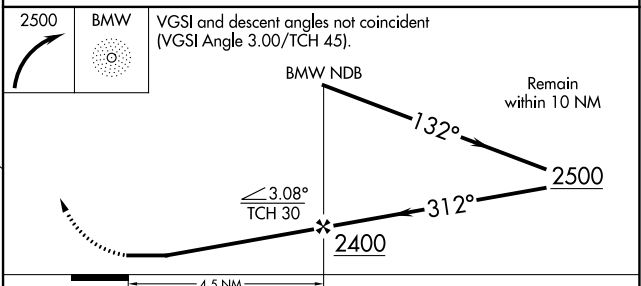
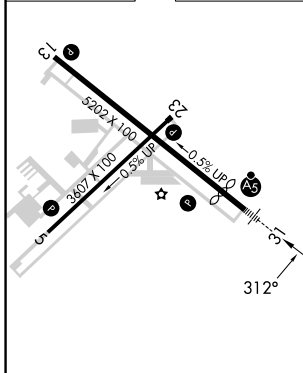
AWOS-3  
**118.575**

ATLANTA APP CON ★  
**132.475 291.1**

UNICOM  
**123.0 (CTAF) 0**



ELEV	934	<b>D</b>	TDZE	922
------	-----	----------	------	-----



	FAF to MAP 4.5 NM			
	A	B	C	D
CATEGORY	A	B	C	D
S-31	1480- $\frac{3}{4}$	558 (600- $\frac{3}{4}$ )	1480- $\frac{1}{8}$	558 (600- $\frac{1}{8}$ )
CIRCLING	1480-1 546 (600-1)	1580-1 646 (700-1)	1660-2 726 (800-2)	1660-2 $\frac{1}{4}$ 726 (800-2 $\frac{1}{4}$ )

SE-4, 28 NOV 2024 to 26 DEC 2024

SE-4, 28 NOV 2024 to 26 DEC 2024