


WAAS CH 70425 W02A	APP CRS 016°	Rwy Idg 5500 TDZE 666 Apt Elev 666
--	------------------------	---

RNAV (GPS) RWY 2

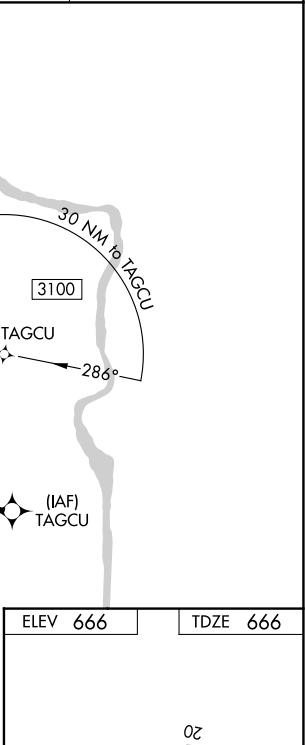
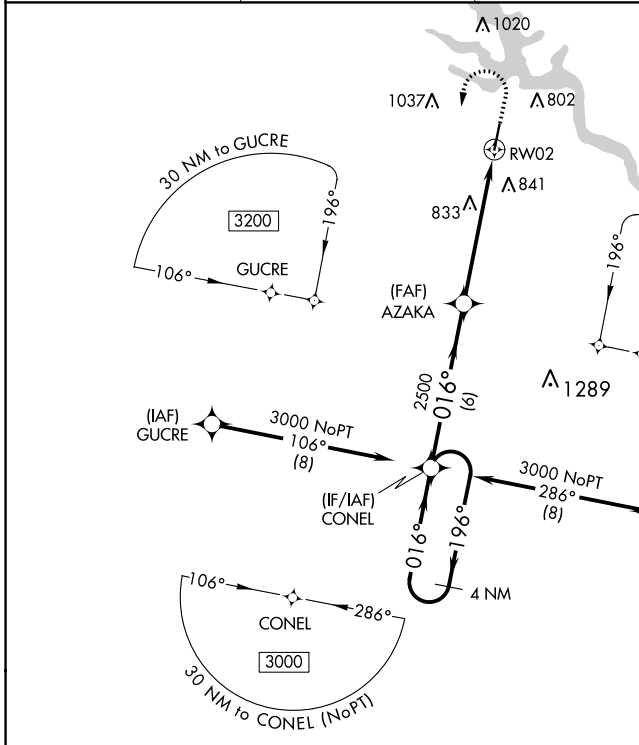
ROCK HILL/YORK COUNTY/BRYANT FLD (UZA)

⚠ Baro-VNAV and VDP NA when using Charlotte/Douglas Intl altimeter setting. For uncompensated Baro-VNAV systems, LNAV/VNAV NA below -9°C (16°F) or above 54°C (130°F). DME/DME RNP-0.3 NA. When local altimeter setting not received, use Charlotte/Douglas Intl altimeter setting and increase all DA 45 feet and all MDA 60 feet. Increase LNAV/VNAV all Cats visibility 1/8 mile and LNAV Cat C/D visibility 1/4 mile.

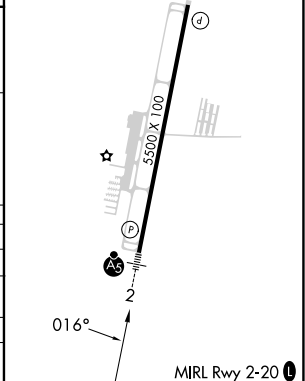
MALSR 

MISSED APPROACH:
Climb to 1600 then climbing left turn to 3000 direct CONEL and hold.

ASOS 120.775	CHARLOTTE APP CON 120.05 307.8	GCO 121.725	UNICOM 123.05 (CTAF) 📻
------------------------	--	-----------------------	---



CATEGORY	4 NM Holding Pattern			
	A	B	C	D
LPV DA	866-1/2 200 (200-1/2)			
LNAV/VNAV DA	1022-3/4 356 (400-3/4)			
LNAV MDA	1100-1/2	434 (500-1/2)	1100-3/4	434 (500-3/4)
C CIRCLING	1140-1 474 (500-1)	1160-1 494 (500-1)	1340-2 674 (700-2)	1340-2 1/4 674 (700-2 1/4)



SE-2, 28 NOV 2024 to 26 DEC 2024

SE-2, 28 NOV 2024 to 26 DEC 2024