

NDB IRS <b>382</b>	APP CRS <b>165°</b>	Rwy Idg <b>5201</b>
		TDZE <b>915</b>
		Apt Elev <b>925</b>

# NDB RWY 19

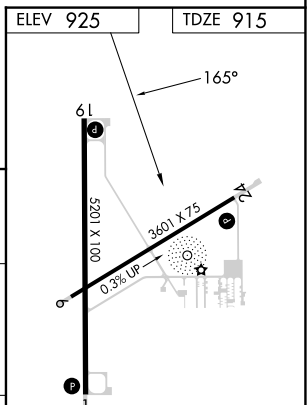
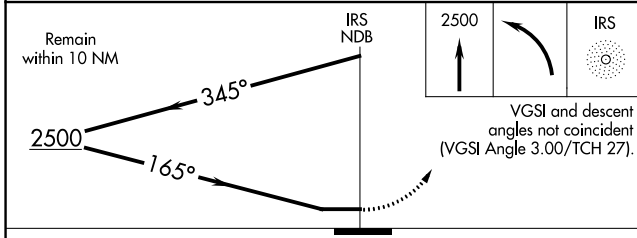
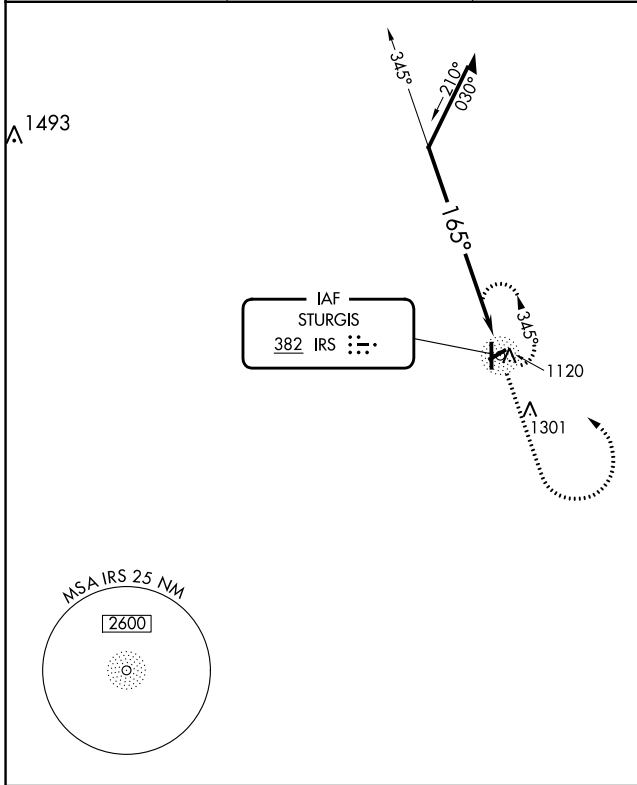
KIRSCH MUNI (IRS)

RADAR required for procedure entry.

**Procedure NA at night. Rwy 19 helicopter visibility reduction below 1 SM NA.**

MISSED APPROACH: Climb to 2500 then left turn direct IRS NDB and hold.

AWOS-3 <b>121.325</b>	GREAT LAKES APP CON * <b>121.2 239.25</b>	CLNC DEL <b>118.325</b>	UNICOM <b>123.05 (CTAF)</b>
--------------------------	--	----------------------------	--------------------------------



CATEGORY	A	B	C	D
S-19	1520-1	605 (600-1)	1520-1¾	605 (600-1¾)
<b>C</b> CIRCLING	1520-1	595 (600-1)	1620-2 695 (700-2)	1620-2¼ 695 (700-2¼)

REIL Rwy 1, 19 and 24  
MIRL Rwy 1-19 and 6-24

EC-1, 28 NOV 2024 to 26 DEC 2024

EC-1, 28 NOV 2024 to 26 DEC 2024