

WAAS CH 90230 W19A	APP CRS 186°	Rwy Idg TDZE Apt Elev	5201 915 925
--	------------------------	-----------------------------	---

RNAV (GPS) RWY 19

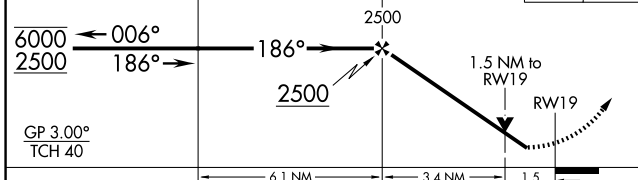
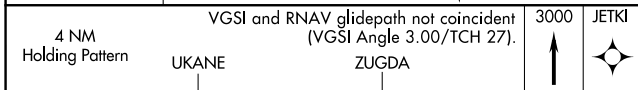
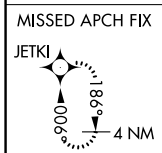
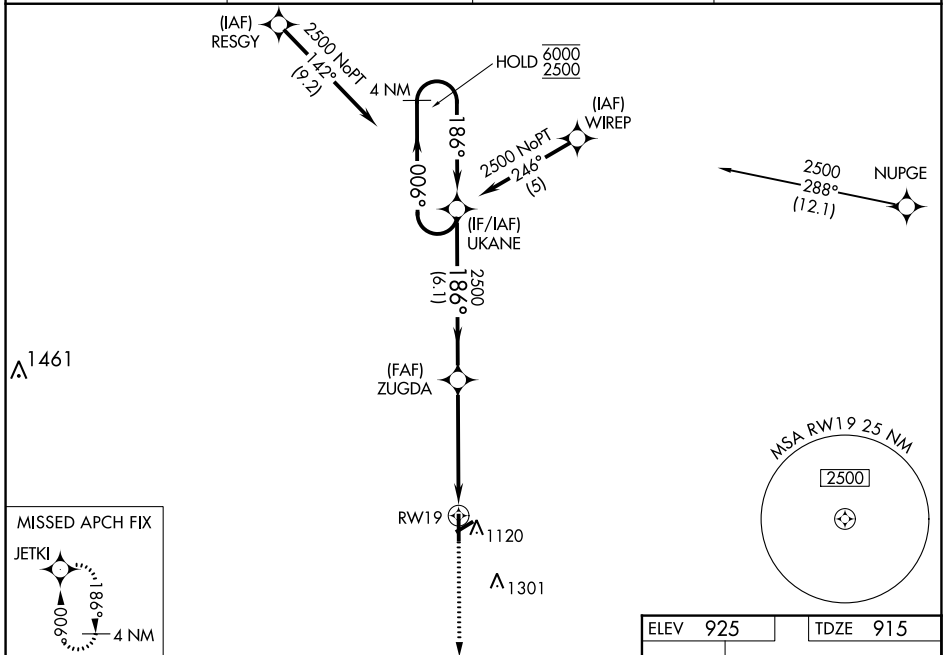
KIRSCH MUNI (IRS)

RNP APCH - GPS.

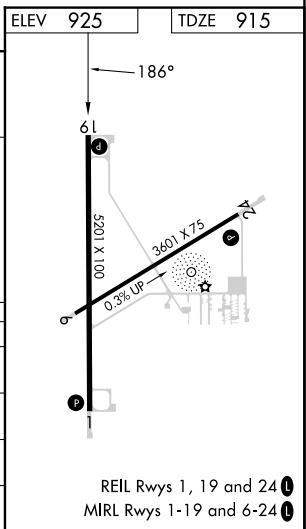
- ⚠ Circling Rwy 6 NA at night. Rwy 19 helicopter visibility reduction below ¼ SM NA. Baro-VNAV NA.
- ⚠ When local altimeter setting not received, use Three Rivers altimeter setting and increase LPV DA to 1276 feet and all visibilities ½ SM. Increase LNAV/VNAV DA to 1270 feet and all visibilities ½ SM. Increase all MDAs 60 feet and LNAV visibility Cat C/D ¼ SM, and Circling visibility Cat C/D ¼ SM.

MISSED APPROACH:
Climb to 3000 direct
JETKI and hold.

AWOS-3 121.325	GREAT LAKES APP CON * 121.2 239.25	CLNC DEL 118.325	UNICOM 123.05 (CTAF) 0
--------------------------	--	----------------------------	----------------------------------



CATEGORY	A	B	C	D
LPV DA		1235-7/8	320 (400-7/8)	
LNAV/VNAV DA		1229-7/8	314 (400-7/8)	
LNAV MDA	1400-1	485 (500-1)	1400-1 3/8	485 (500-1 3/8)
CIRCLING	1440-1	515 (600-1)	1620-2 695 (700-2)	1620-2 1/4 695 (700-2 1/4)



EC-1, 28 NOV 2024 to 26 DEC 2024

EC-1, 28 NOV 2024 to 26 DEC 2024