

AL-5369 (FAA)


ILS or LOC RWY 5

SHENANDOAH VALLEY RGNL (SHD)

LOC I-SHD 109.5	APP CRS 047°	Rwy Idg 6002	TDZE 1184
		Apt Elev 1201	

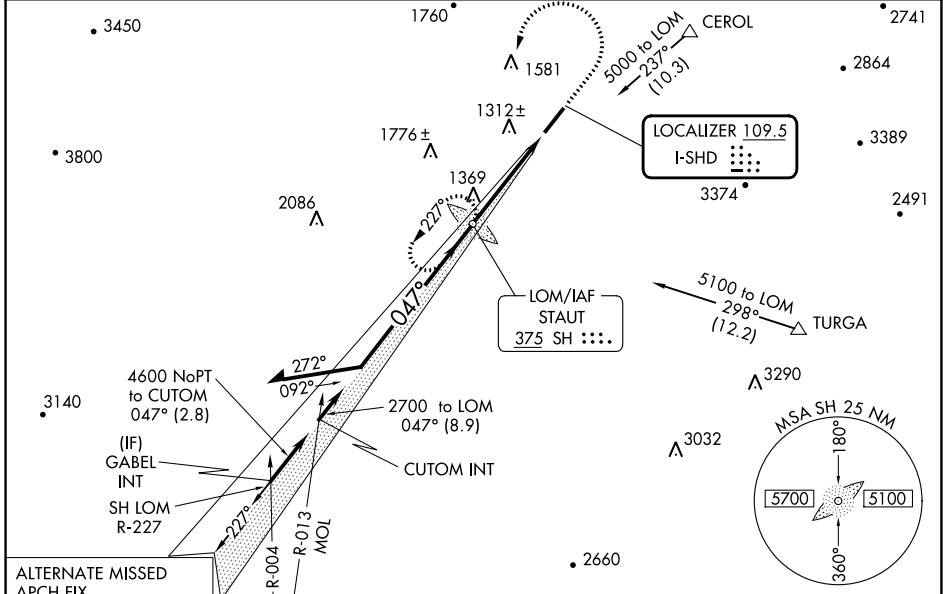
ADF required.

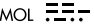
⚠ Autopilot coupled approach NA below 1533 feet. When local altimeter setting not received, use Charlottesville altimeter setting and increase all DA 130 feet and all MDA 140 feet. Increase S-ILS visibility ¼ SM all Cats, S-LOC 5 visibility Cat C/D ¼ SM, Circling Cat C ½ SM, Cat D ¼ SM. For inop ALS when using Charlottesville altimeter setting, increase S-ILS 5 visibility to 1¼ SM.

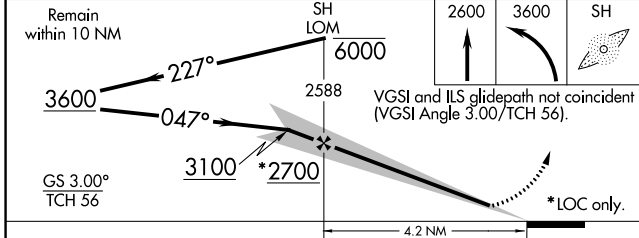
MALSRS 

MISSED APPROACH: Climb to 2600 then climbing left turn to 3600 direct SH LOM and hold.

AWOS-3 124.925	POTOMAC APP CON 132.85 323.125	CLNC DEL 118.35	UNICOM 123.0 (CTAF)
--------------------------	--	---------------------------	-------------------------------

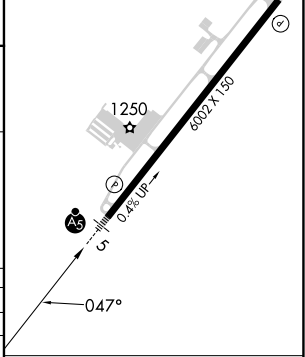


ALTERNATE MISSED APCH FIX
MONTEBELLO
MOL 
115.3
Chan 100
R-271 -091°



ELEV 1201	D	TDZE 1184
-----------	----------	-----------

REIL Rwy 23 
HIRL Rwy 5-23 



CATEGORY	A	B	C	D
S-ILS 5		1384-½	200 (200-½)	
S-LOC 5	1620-½	436 (500-½)	1620-¾ 436 (500-¾)	1620-1 436 (500-1)
CIRCLING	1660-1 459 (500-1)	1760-1 559 (600-1)	1900-2 699 (700-2)	2060-2¾ 859 (900-2¾)

FAF to MAP 4.2 NM					
Knots	60	90	120	150	180
Min:Sec	4:12	2:48	2:06	1:41	1:24

NE-3, 28 NOV 2024 to 26 DEC 2024

NE-3, 28 NOV 2024 to 26 DEC 2024