


LOM SH 375	APP CRS 047°	Rwy Idg 6002
		TDZE 1184
		Apt Elev 1201

AL-5369 (FAA)

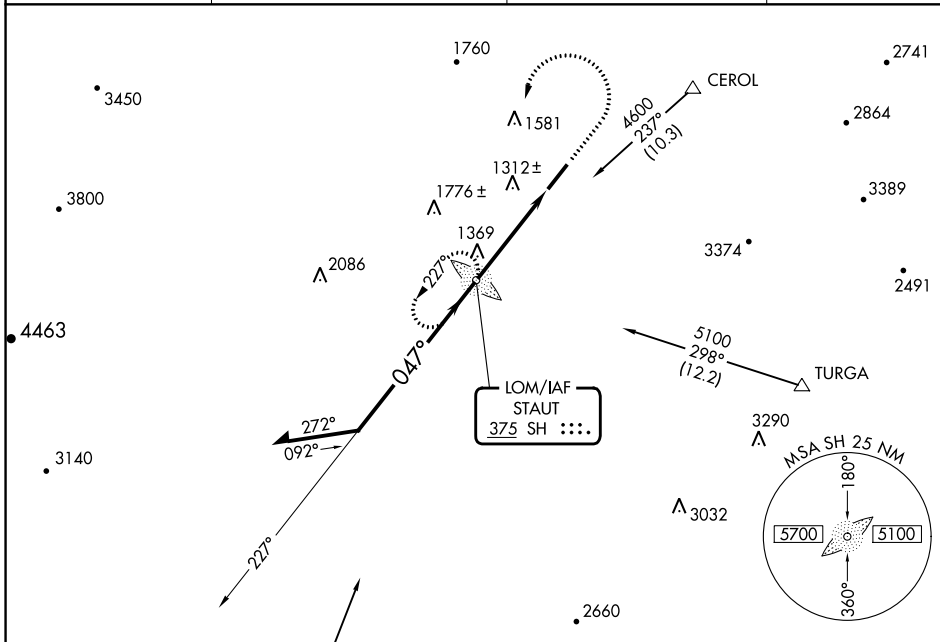
NDB RWY 5

SHENANDOAH VALLEY RGNL (SHD)

⚠ When local altimeter setting not received, use Charlottesville altimeter setting and increase all MDAs 140 feet and visibility S-5 and Circling Cat C ½ SM, Cat D ¼ SM.

MALSR  MISSED APPROACH: Climb to 2400 then climbing left turn to 3600 direct SH LOM and hold.

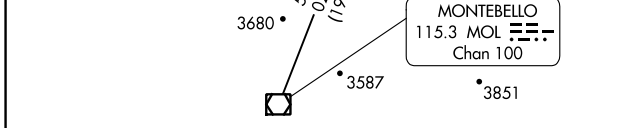
AWOS-3 124.925	POTOMAC APP CON 132.85 323.125	CLNC DEL 118.35	UNICOM 123.0 (CTAF) 0
--------------------------	--	---------------------------	---------------------------------



NE-3, 28 NOV 2024 to 26 DEC 2024

NE-3, 28 NOV 2024 to 26 DEC 2024

ELEV 1201	D TDZE 1184
-----------	--------------------



REIL Rwy 23 **0**
HIRL Rwy 5-23 **0**

FAF to MAP 4.2 NM

Knots	60	90	120	150	180
Min:Sec	4:12	2:48	2:06	1:41	1:24

	A	B	C	D
S-5	1760-¾	576 (600-¾)	1760-1 576 (600-1)	1760-1½ 576 (600-1½)
CIRCLING	1760-1	559 (600-1)	1900-2 699 (700-2)	2060-2¾ 859 (900-2¾)