

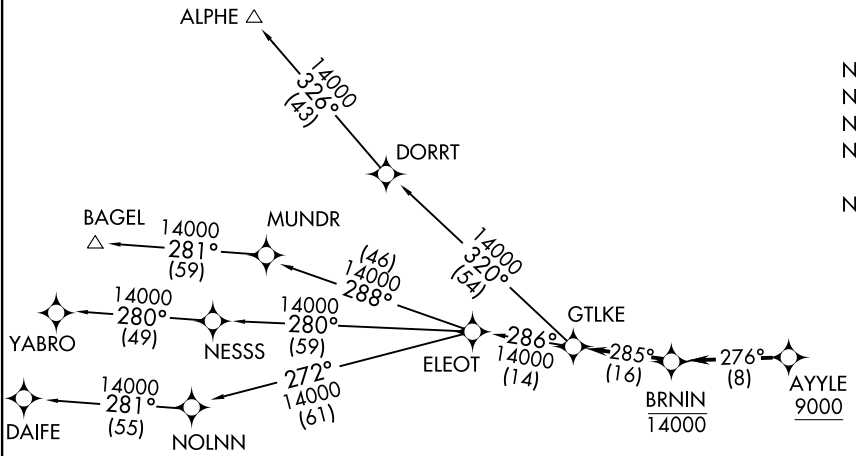
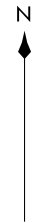
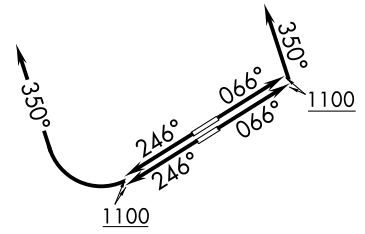
GTIKE FOUR DEPARTURE (RNAV)
(GTIKE4.GTIKE) 26MAR20

CLEVELAND, OHIO
BURKE LAKEFRONT (BKL)

ATIS
125.25
CLNC DEL
339.8
121.9 (when tower closed)
GND CON
121.9 339.8
LAKEFRONT TOWER *
124.3 (CTAF) 339.8
CLEVELAND DEP CON
125.35 346.325

TAKEOFF MINIMUMS:
Rwys 6L/R, 24R: Standard with a minimum climb of 500' per NM to 1100.
Rwy 24L: 400-1% or standard with a minimum climb of 757' per NM to 1000.

**TOP ALTITUDE:
ASSIGNED BY ATC**



- NOTE: RADAR required.
- NOTE: RNAV 1.
- NOTE: DME/DME/IRU or GPS required.
- NOTE: BAGEL TRANSITION: For aircraft landing MDW only, or as assigned by ATC.
- NOTE: DAIFE TRANSITION: For aircraft landing ORD only, or as assigned by ATC.

NOTE: Chart not to scale.

(NARRATIVE ON FOLLOWING PAGE)

(GTIKE4.GTIKE) 20086
GTIKE FOUR DEPARTURE (RNAV)

AL-5370 (FAA)
BURKE LAKEFRONT (BKL)
CLEVELAND, OHIO

GTLKE FOUR DEPARTURE (RNAV)



DEPARTURE ROUTE DESCRIPTION

TAKEOFF RUNWAYS 6L/R: Climb on heading 066° to 1100, then on heading 350° or as assigned by ATC, maintain 2000 (do not climb above 2000) for RADAR vectors to cross AYYLE at or above 9000, thence....

TAKEOFF RUNWAYS 24L/R: Climb on heading 246° to 1100, then right turn heading 350° or as assigned by ATC, maintain 2000 (do not climb above 2000) for RADAR vectors to cross AYYLE at or above 9000, thence....

....on track 276° to cross BRNIN at or below 14000, then on track 285° to GTLKE then on (transition). Maintain ATC assigned altitude, expect filed altitude 10 minutes after departure.

ALPHE TRANSITION (GTLKE4.ALPHE)

BAGEL TRANSITION (GTLKE4.BAGEL)

DAIFE TRANSITION (GTLKE4.DAIFE)

YABRO TRANSITION (GTLKE4.YABRO)

EC-2, 28 NOV 2024 to 26 DEC 2024

EC-2, 28 NOV 2024 to 26 DEC 2024