

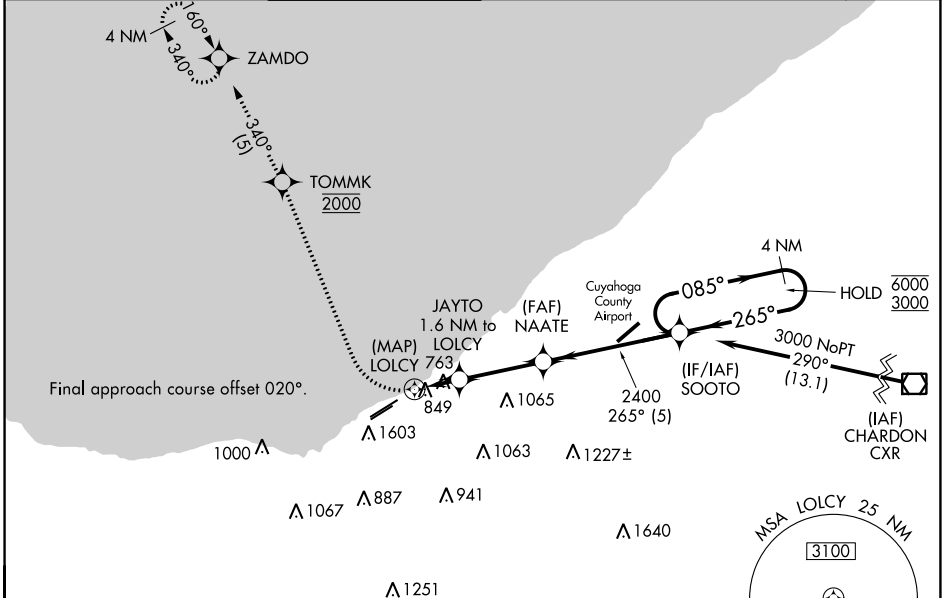
WAAS CH 77621 W24A	APP CRS 265°	Rwy Idg TDZE Apt Elev	6003 583 584
--	------------------------	-----------------------------	---

RNAV (GPS) RWY 24R

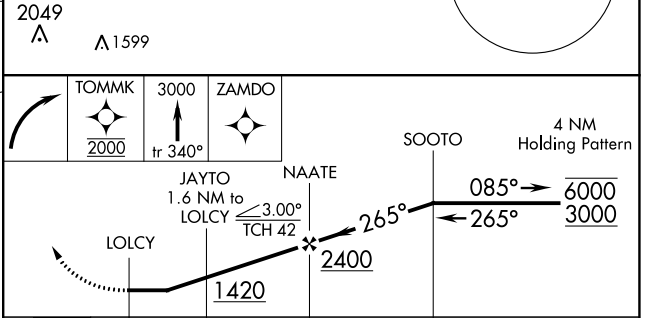
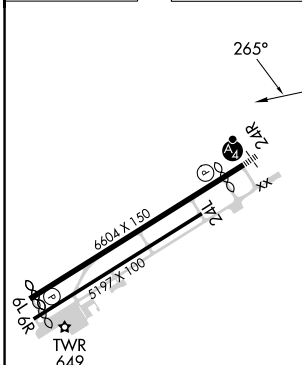
BURKE LAKEFRONT (BKL)

RNP APCH.		MISSED APPROACH: Climbing right turn direct TOMMK, cross TOMMK at 2000, then climb to 3000 on track 340° to ZAMDO and hold.
<p>Circling Rwy 6R NA at night. Rwy 24R helicopter visibility reduction below 3/4 SM NA. Circling NA SE of Rwy 6R and 24L. For inop ALS, increase LNAV Cat C/D visibility to 1 3/8 SM.</p>		

ATIS 125.25	CLEVELAND APP CON 125.35 346.325	LAKEFRONT TOWER ★ 124.3 (CTAF) 0 339.8	GND CON 121.9 339.8	CLNC DEL 339.8	CLNC DEL 121.9 (when twr closed)	UNICOM 122.95 0
-----------------------	--	--	-------------------------------	--------------------------	---	---------------------------



ELEV	584	D	TDZE	583
------	-----	----------	------	-----



	0.9	1.6 NM	3.1 NM	5 NM				
CATEGORY	A		B		C		D	
LP MDA	1020-3/4		437 (500-3/4)		1020-1		437 (500-1)	
LNAV MDA	1100-3/4		517 (600-3/4)		1100-1 1/4		517 (600-1 1/4)	
C CIRCLING	1100-1		516 (600-1)		1140-1 1/2		1200-2	
					556 (600-1 1/2)		616 (700-2)	

- REIL Rwy 6L 0
- REIL Rwy 24L
- HIRL Rwy 6L-24R 0
- HIRL Rwy 6R-24L

EC-2, 28 NOV 2024 to 26 DEC 2024

EC-2, 28 NOV 2024 to 26 DEC 2024