


LOC I-SQK <b>108.35</b>	APP CRS <b>185°</b>	Rwy Idg TDZE Apt Elev	<b>6503</b> <b>866</b> <b>866</b>
----------------------------	------------------------	-----------------------------	---

# ILS or LOC RWY 18

METTEL FLD (CEV)

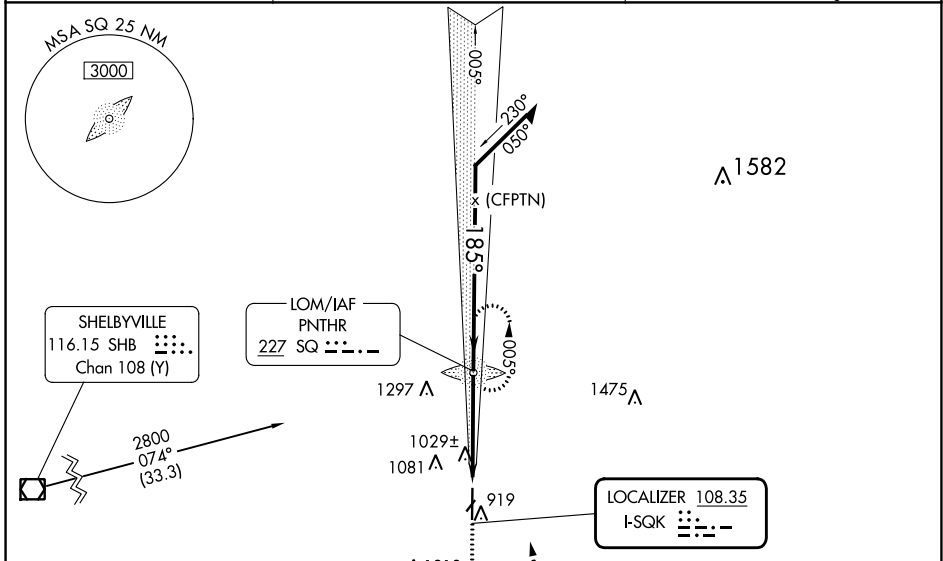
ADF required.

**NA** Circling NA to Rwys 4 and 22. For inop MALS, increase S-LOC 18 Cats C/D visibility to 1 1/2 mile. When local altimeter setting not received, use James M Cox Dayton Intl altimeter setting and increase ILS DA to 1237 feet and visibility all Cats to 3/4 mile, increase all MDA 140 feet and LOC Cats C/D visibility to 1 1/2 mile, and Circling Cat B visibility to 1/4 miles and Cat C to 2 3/4 miles and Cat D to 3 miles. When using James M Cox Dayton Intl altimeter setting: for inop MALS, increase S-ILS 18 all Cats visibility to 1 mile and increase S-LOC 18 Cat A/B visibility to 1 mile and Cat C/D to 1 1/2 mile.

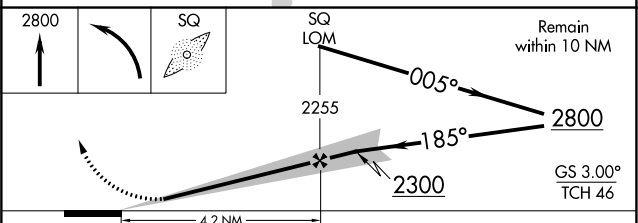
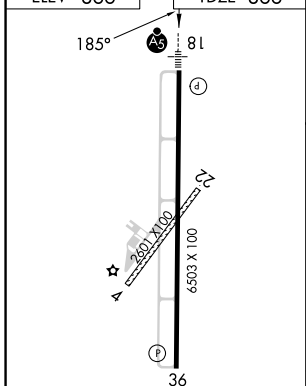
**MALS** 

**MISSED APPROACH:** Climb to 2800 then left turn direct SQ LOM and hold.

AWOS-3 <b>118.325</b>	COLUMBUS APP CON <b>134.45 352.05</b>	UNICOM <b>122.8 (CTAF)</b> 
--------------------------	--	---



ELEV 866	TDZE 866
----------	----------



FAF to MAP 4.2 NM					
Knots	60	90	120	150	180
Min:Sec	4:12	2:48	2:06	1:41	1:24
<b>CIRCLING</b>	1440-1 574 (600-1)	1540-1 674 (700-1)	1620-2 1/4 754 (800-2 1/4)	1620-2 1/2 754 (800-2 1/2)	
S-ILS 18	1116-1 1/2		250 (300-1/2)		
S-LOC 18	1280-1 1/2	414 (500-1/2)	1280-3/4	414 (500-3/4)	

EC-2, 28 NOV 2024 to 26 DEC 2024

EC-2, 28 NOV 2024 to 26 DEC 2024