

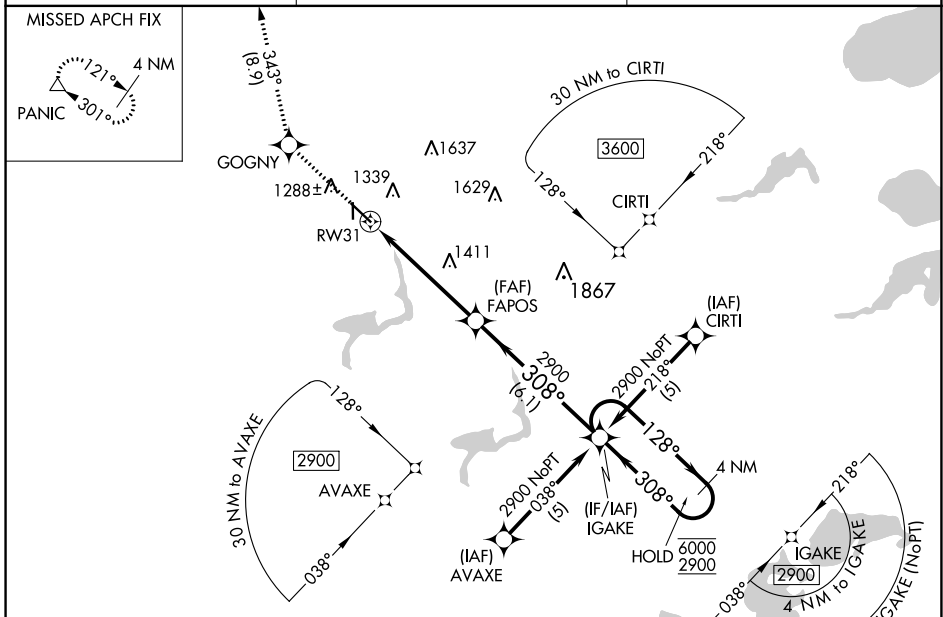
WAAS CH <b>42614</b> <b>W31A</b>	APP CRS <b>308°</b>	Rwy Idg <b>5639</b> TDZE <b>1182</b> Apt Elev <b>1183</b>
--	------------------------	---

# RNAV (GPS) RWY 31

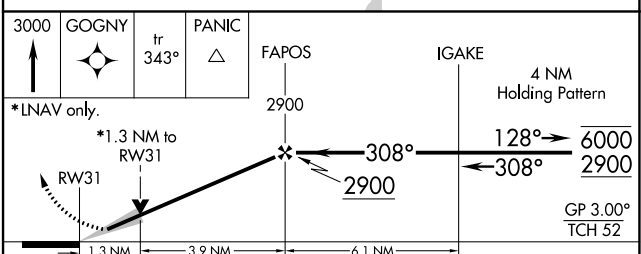
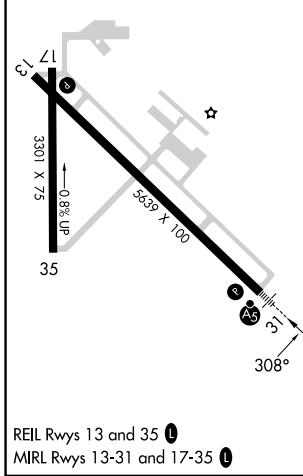
FERGUS FALLS MUNI/EINAR MICKELSON FLD (FFM)

RNP APCH-GPS.	MALSR 	MISSED APPROACH: Climb to 3000 direct GOGNY and on track 343° to PANIC and hold.
<p><b>⚠</b> For uncompensated Baro-VNAV systems, LNAV/VNAV NA below -17°C or above 54°C. For inop ALS, increase LNAV/VNAV all Cats visibility to 1 SM and LNAV Cat D visibility to 1½ SM.</p>		

AWOS-3PT <b>119.05</b>	MINNEAPOLIS CENTER <b>126.1 269.2</b>	UNICOM <b>122.8 (CTAF) 0</b>
---------------------------	--	---------------------------------



ELEV 1183	TDZE 1182
-----------	-----------



CATEGORY	A	B	C	D
LPV DA		1382-½	200 (200-½)	
LNAV/VNAV DA		1545-⅝	363 (400-⅝)	
LNAV MDA	1640-½	458 (500-½)	1640-⅞	458 (500-⅞)
CIRCLING	1640-1 457 (500-1)	1740-1 557 (600-1)	1820-1¼ 637 (700-1¼)	1940-2½ 757 (800-2½)

NC-1, 28 NOV 2024 to 26 DEC 2024

NC-1, 28 NOV 2024 to 26 DEC 2024