

LOC/DME I-ASX 109.3 Chan 30	APP CRS 023°	Rwy Idg TDZE 826 Apt Elev 827
---	------------------------	---

LOC RWY 2

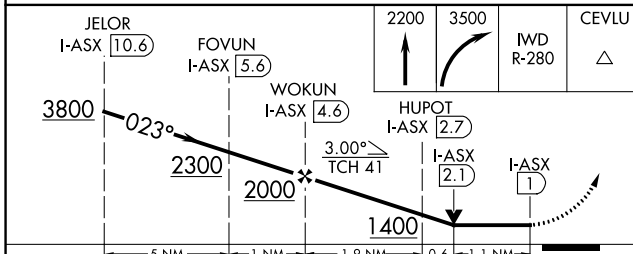
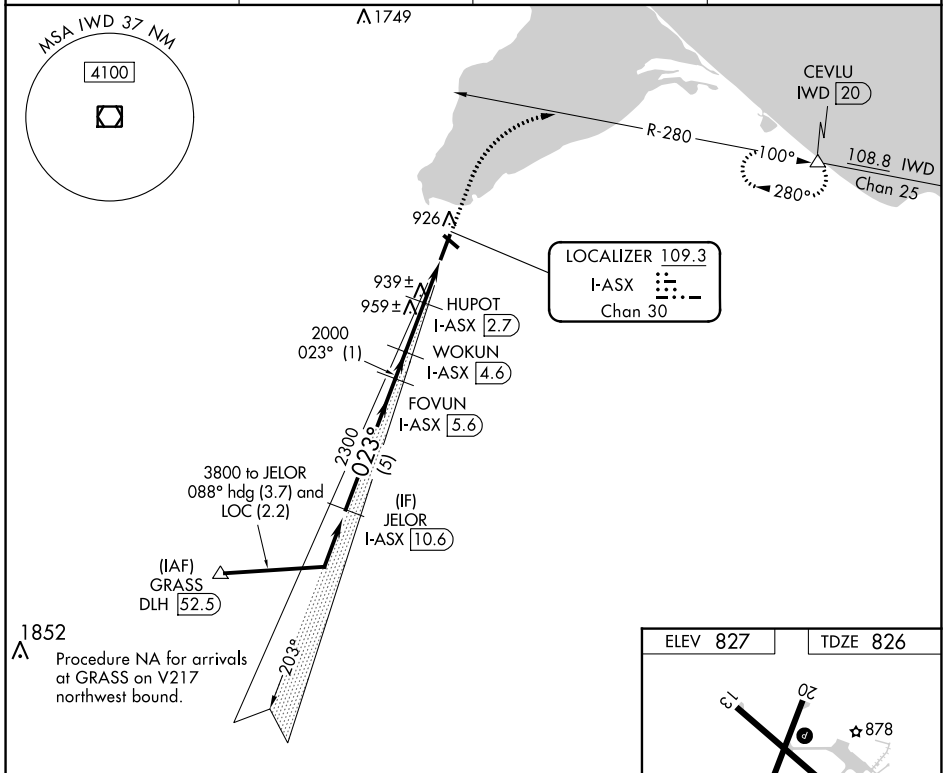
JOHN F KENNEDY MEML (ASX)

DME required.

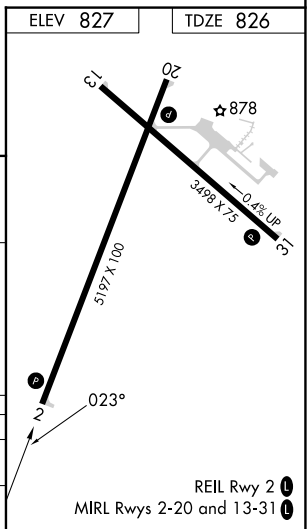
NA Rwy 2 helicopter visibility reduction below 3/4 SM NA. VDP NA when using Ironwood altimeter setting. When local altimeter setting not received, use Ironwood altimeter setting and increase all MDA 140 feet; increase S-02 Cat C/D visibility 3/8 SM and Circling Cat C/D visibility 1/2 SM.

MISSED APPROACH: Climb to 2200 then climbing right turn to 3500 on IWD VOR/DME R-280 to CEVLU/IWD 20 DME and hold.

ASOS 126.775	MINNEAPOLIS CENTER 126.45 276.4	GCO 122.25	UNICOM 122.8 (CTAF) 0
------------------------	---	----------------------	---------------------------------



CATEGORY	A	B	C	D
S-2	1200-1	374 (400-1)	1200-1 1/8	374 (400-1 1/8)
CIRCLING	1240-1 413 (500-1)	1280-1 453 (500-1)	1440-1 1/4 613 (700-1 1/4)	1560-2 1/4 733 (800-2 1/4)



EC-3, 28 NOV 2024 to 26 DEC 2024

EC-3, 28 NOV 2024 to 26 DEC 2024