

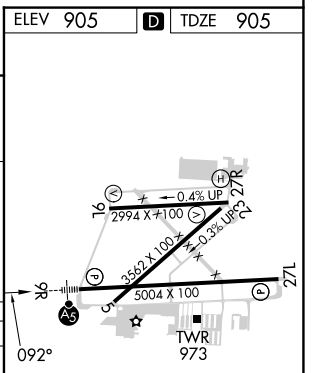
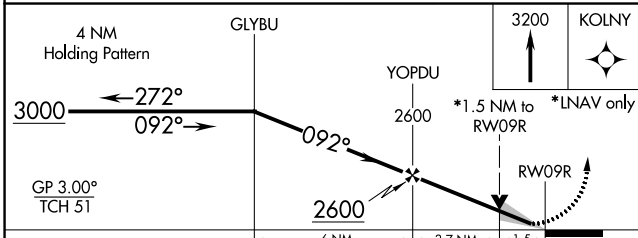
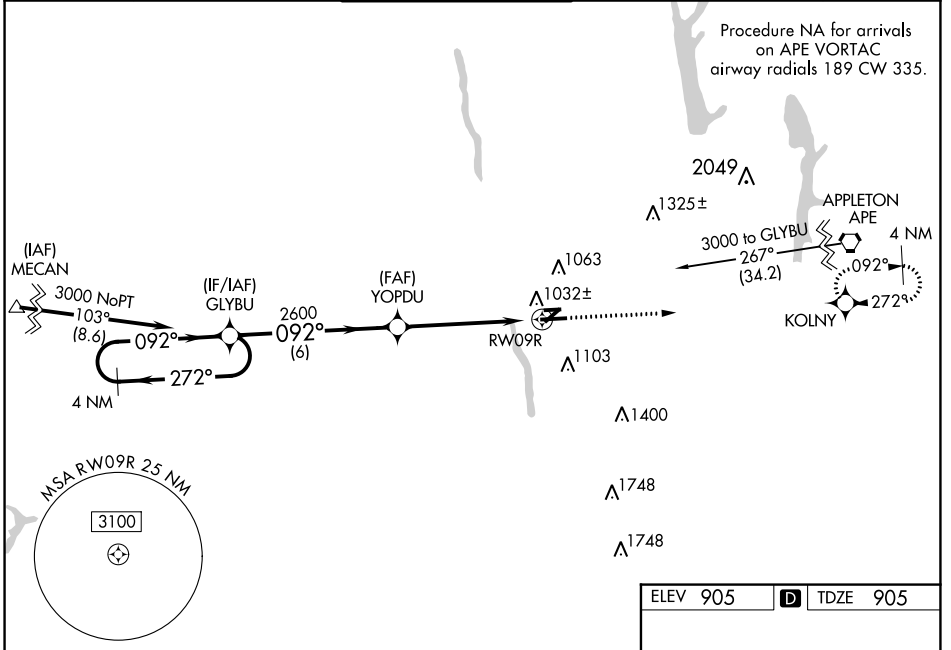
WAAS CH 86420 W09A	APP CRS 092°	Rwy Idg TDZE Apt Elev	5004 905 905
--	------------------------	-----------------------------	---

RNAV (GPS) RWY 9R

OHIO STATE UNIVERSITY (OSU)

RNP APCH.		MALSR AS	MISSED APPROACH: Climb to 3200 direct KOLNY and hold.
<p>▼ Baro-VNAV NA when using John Glenn Columbus Intl altimeter setting. For uncompensated Baro-VNAV systems, LNAV/VNAV NA below -16°C or above 38°C. VDP NA with John Glenn Columbus Intl altimeter setting. When local altimeter setting not received, use John Glenn Columbus Intl altimeter setting; increase LPV DA to 1140 feet; increase LNAV/VNAV DA to 1227 feet; increase all MDAs 40 feet and LNAV visibility Cat C ¼ SM, Cat D ¼ SM and Circling Cat D ¼ SM. Circling Rwy 23 NA at night. For inop ALS, increase LNAV/VNAV visibility all Cats to ¼ SM.</p>			

ATIS 121.35	COLUMBUS APP CON 125.95 317.775	STATE TOWER * 118.8 (CTAF) 254.325	GND CON 121.7	CLNC DEL 121.7	UNICOM 122.95
-----------------------	---	--	-------------------------	--------------------------	-------------------------



CATEGORY	A	B	C	D
LPV DA		1105-½	200 (200-½)	
LNAV/VNAV DA		1192-½	287 (300-½)	
LNAV MDA	1420-½	515 (600-½)	1420-1	515 (600-1)
CIRCLING	1420-1	515 (600-1)	1420-1 ½	1680-2 ½
			515 (600-1 ½)	775 (800-2 ½)

EC-2, 28 NOV 2024 to 26 DEC 2024

EC-2, 28 NOV 2024 to 26 DEC 2024