

WAAS CH 40030 W26A	APP CRS 256°	Rwy Idg 2810 TDZE 523 Apt Elev 523
--	------------------------	---

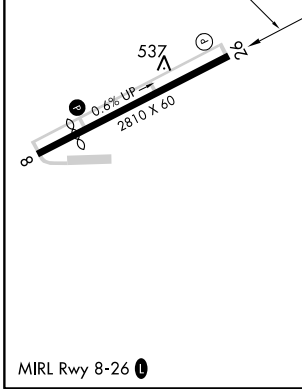
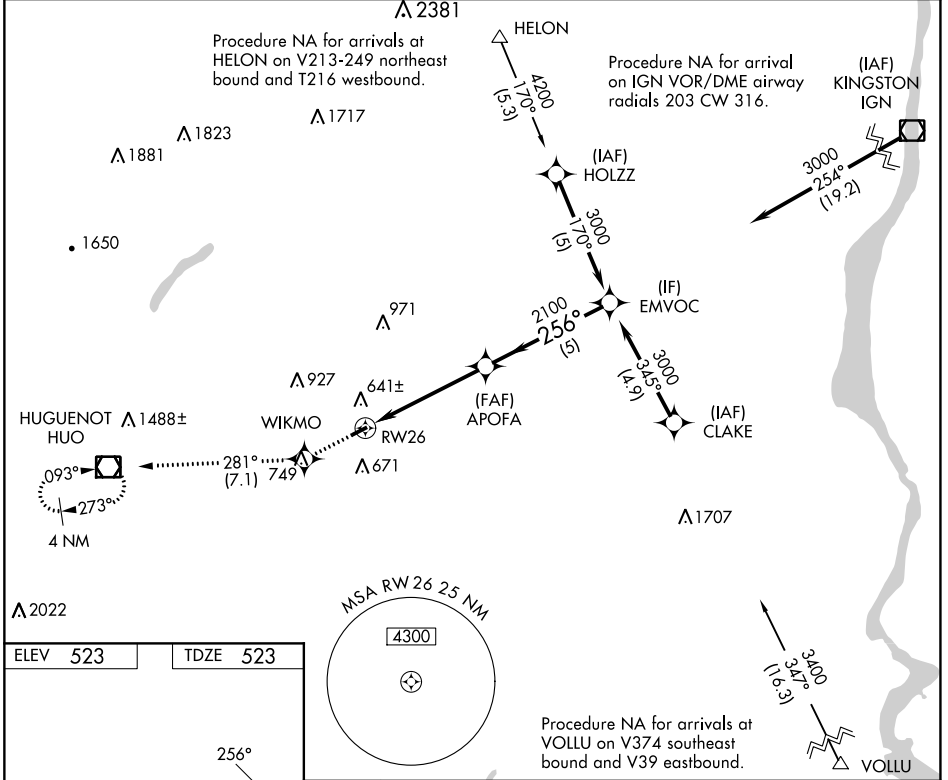
RNAV (GPS) RWY 26

RANDALL (Ø6N)

RNP APCH. Procedure NA at night. Rwy 26 helicopter visibility reduction below 1 SM NA. Use Newburgh altimeter setting; when not received, use Montgomery altimeter setting.

MISSED APPROACH: Climb to 3500 direct WIKMO and on track 281° to HVO VOR/DME and hold, continue climb-in-hold to 3500.

NEW YORK APP CON 132.75 363.1	UNICOM 122.8 (CTAF) 0
---	---------------------------------



3500	WIKMO	tr 281°	HVO	Visual Segment - Obstacles.	EMVOC
↑	✧		◻		
				APOFA	3000
				2100	
				4.9 NM	5 NM
CATEGORY	A	B	C	D	
LP MDA	1020-1 497 (500-1)		NA		
LNAV MDA	1060-1 537 (600-1)		NA		
CIRCLING	1080-1 557 (600-1)		NA		

NE-2, 28 NOV 2024 to 26 DEC 2024

NE-2, 28 NOV 2024 to 26 DEC 2024