

WAAS CH <b>93610</b> <b>W16A</b>	APP CRS <b>157°</b>	Rwy Idg <b>4742</b> TDZE <b>26</b> Apt Elev <b>32</b>
--	------------------------	---

# RNAV (GPS) Z RWY 16

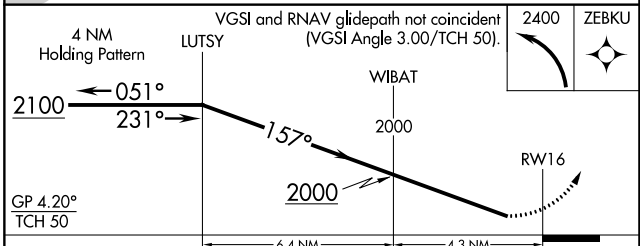
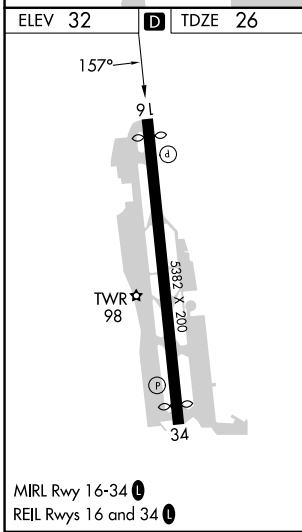
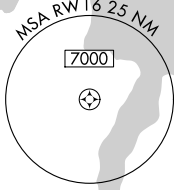
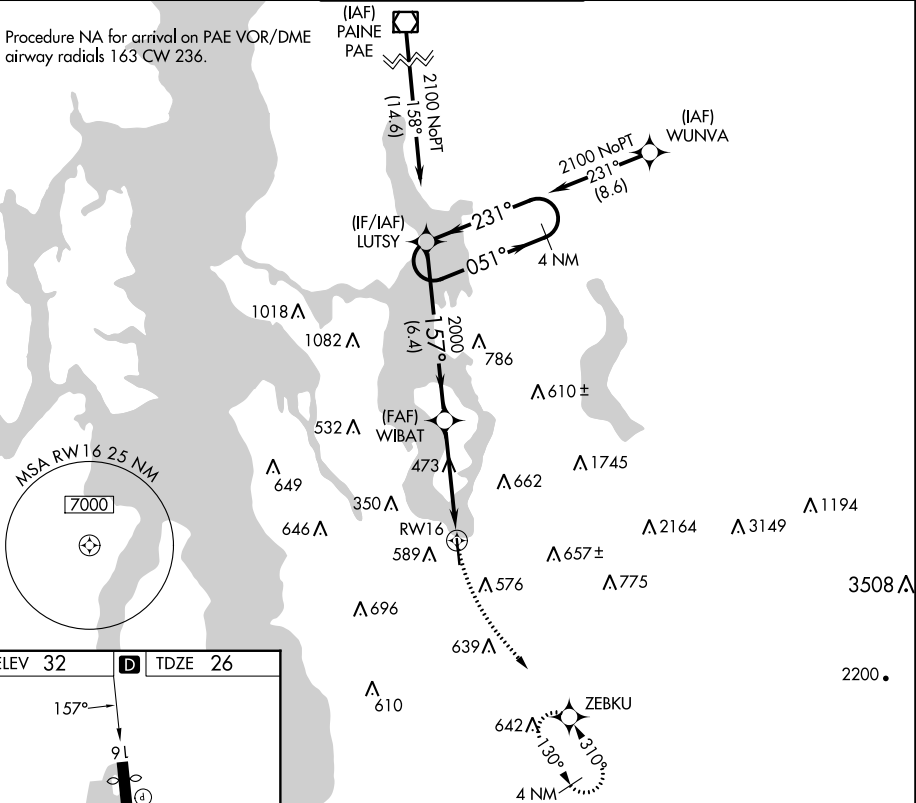
RENTON MUNI (RNT)

For uncompensated Baro-VNAV systems, LNAV/VNAV NA below -5°C (23°F) or above 48°C (119°F). DME/DME RNP-0.3 NA. Rwy 16 helicopter visibility reduction below 3/4 SM NA.

MISSED APPROACH: Climbing left turn to 2400 direct ZEBKU and hold.

ATIS <b>126.95</b>	SEATTLE APP CON <b>123.9 338.2</b> (RWY 16) <b>125.9 306.9</b> (RWY 34)	RENTON TOWER* <b>124.7</b> (CTAF) <b>0 256.9</b>	GND CON <b>121.6 256.9</b>	UNICOM <b>122.95</b>
-----------------------	---	---	-------------------------------	-------------------------

Procedure NA for arrival on PAE VOR/DME airway radials 163 CW 236.



CATEGORY	A	B	C	D
LPV DA	526-13/8	500 (500-1%)		NA
LNAV/VNAV DA	668-17/8	642 (700-1%)		NA

NW-1, 28 NOV 2024 to 26 DEC 2024

NW-1, 28 NOV 2024 to 26 DEC 2024