

LOM AK 362	APP CRS 351°	Rwy Idg 3947
		TDZE 1129
		Apt Elev 1134

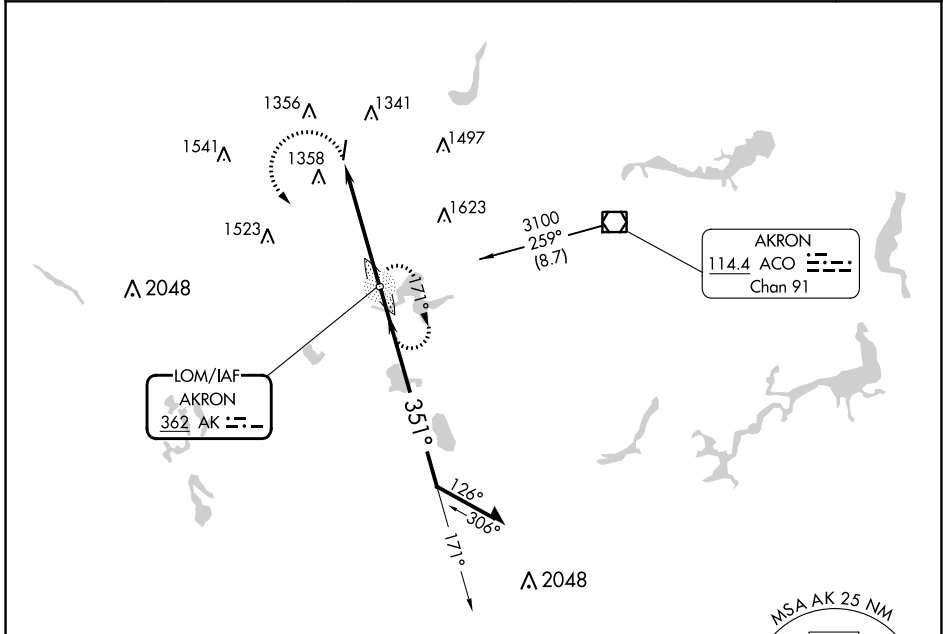
NDB RWY 1

KENT STATE UNIVERSITY (1G3)

▼ When local altimeter setting not received, use Akron Fulton Intl altimeter setting.
▲ NA Rwy 1 helicopter visibility reduction below 3/4 SM NA.

MISSED APPROACH: Climbing left turn to 3100 direct AKRON LOM and hold.

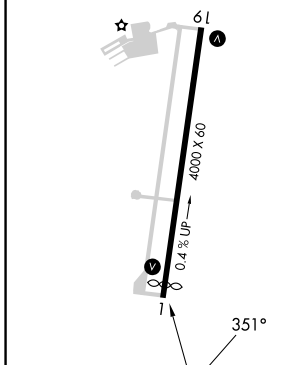
AWOS-2 119.15	AKR ASOS 126.825	CLEVELAND APP CON* 125.5 371.875	CLNC DEL 125.65	UNICOM 122.725 (CTAF)	122.9 0
-------------------------	----------------------------	--	---------------------------	---------------------------------	-----------------------



EC-2, 28 NOV 2024 to 26 DEC 2024

EC-2, 28 NOV 2024 to 26 DEC 2024

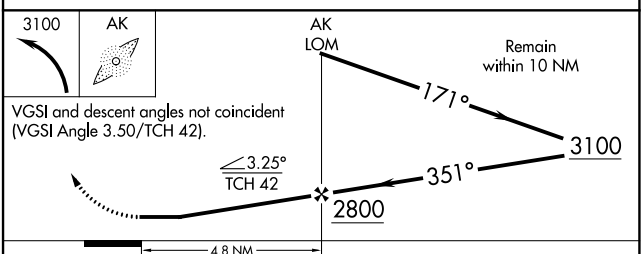
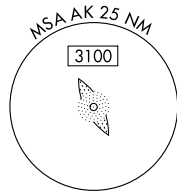
ELEV 1134	TDZE 1129
-----------	-----------



MIRL Rwy 1-19 **0**
REIL Rwys 1 and 19 **0**

FAF to MAP 4.8 NM

Knots	60	90	120	150	180
Min:Sec	4:48	3:12	2:24	1:55	1:36



CATEGORY	A	B	C	D
S-1	1760-1	631 (700-1)	1760-1 7/8 631 (700-1 7/8)	NA
C CIRCLING	1760-1	626 (700-1)	1760-1 7/8 626 (700-1 7/8)	NA