

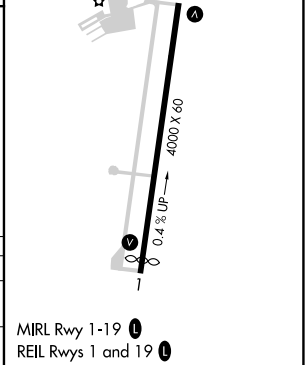
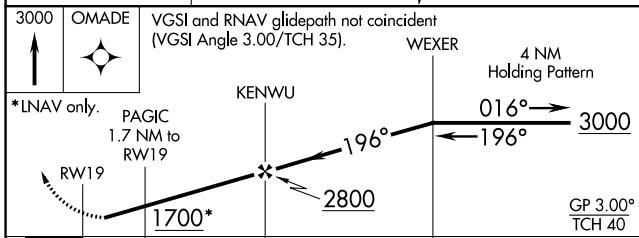
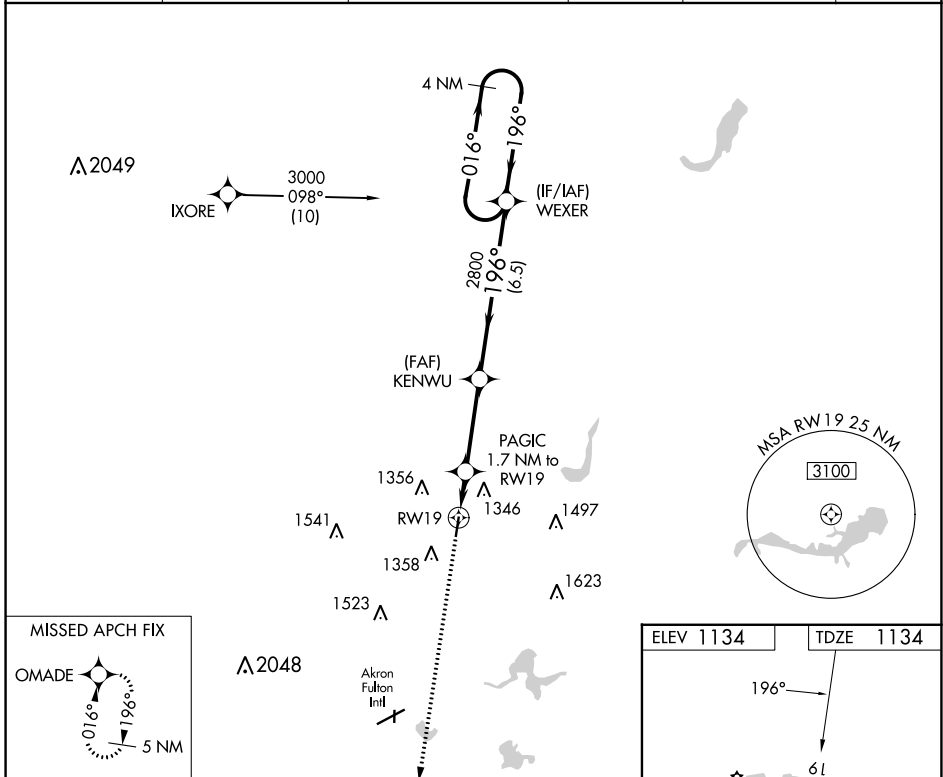
WAAS CH 65701 W19A	APP CRS 196°	Rwy Idg 4000 TDZE 1134 Apt Elev 1134
--	------------------------	---

RNAV (GPS) RWY 19

KENT STATE UNIVERSITY (1G3)

RNP APCH - GPS.		MISSED APPROACH: Climb to 3000 direct OMADE and hold.	
Rwy 19 helicopter visibility reduction below 3/4 SM NA. When local altimeter setting not received, use Akron Fulton Intl altimeter setting.			

AWOS-2 119.15	AKR ASOS 126.825	CLEVELAND APP CON * 125.5 371.875	CLNC DEL 125.65	UNICOM 122.725 (CTAF)	122.9
-------------------------	----------------------------	---	---------------------------	---------------------------------	--------------



CATEGORY	A	B	C	D
LPV DA	1443-1 309 (400-1)			NA
LNAV MDA	1580-1 446 (500-1)		1580-1 1/4 446 (500-1 1/4)	NA

EC-2, 28 NOV 2024 to 26 DEC 2024

EC-2, 28 NOV 2024 to 26 DEC 2024