

TIFTON, GEORGIA

AL-5398 (FAA)

23334

WAAS CH 61118 W34A	APP CRS 332°	Rwy Ldg TDZE Apt Elev	6506 354 355
--	------------------------	-----------------------------	---

RNAV (GPS) RWY 34

HENRY TIFT MYERS (TMA)

⚠ For uncompensated Baro-VNAV systems, LNAV/VNAV NA below -15°C (5°F) or above 54°C (130°F).
⚠ DME/DME RNP-0.3 NA. Circling Rwy 10 NA at night.
 Rwy 34 helicopter visibility reduction below ¾ SM NA.

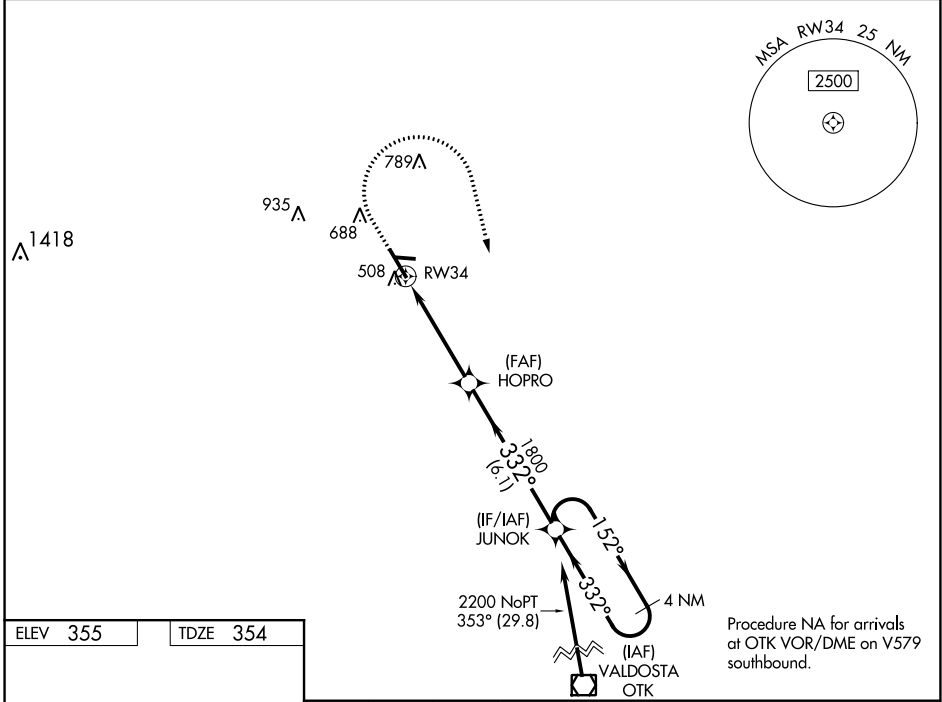
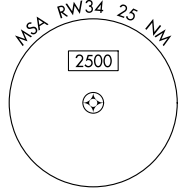


MISSED APPROACH: Climb to 900 then climbing right turn to 2200 direct JUNOK and hold.

AWOS-3PT
118.525

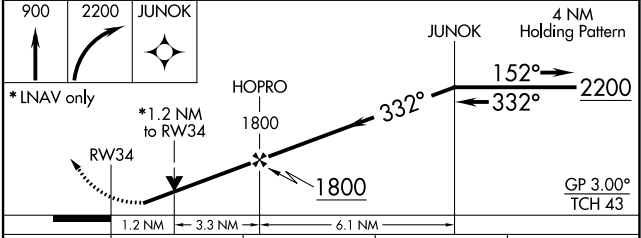
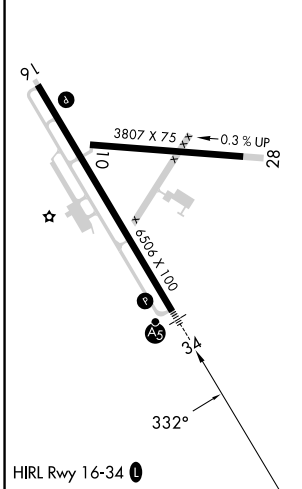
VALDOSTA APP CON ★
126.6 285.6

UNICOM
122.7 (CTAF) 0



Procedure NA for arrivals at OTK VOR/DME on V579 southbound.

ELEV 355	TDZE 354
----------	----------



CATEGORY	A	B	C	D
LPV DA		638-¾	284 (300-¾)	
LNAV/VNAV DA		684-¾	330 (400-¾)	
LNAV MDA		780-¾	426 (500-¾)	
C CIRCLING	920-1 565 (600-1)	1060-1 705 (800-1)	1060-2 705 (800-1)	1240-3 885 (900-3)

TIFTON, GEORGIA
Amdt 1A 17AUG17

31°26'N-83°29'W

RNAV (GPS) RWY 34

HENRY TIFT MYERS (TMA)

SE-4, 28 NOV 2024 to 26 DEC 2024

SE-4, 28 NOV 2024 to 26 DEC 2024