

LINDBERGH EIGHT DEPARTURE

AL-5400 (FAA)

SPIRIT OF ST LOUIS (STLS)
ST. LOUIS, MISSOURI

ATIS
134.8
CLNC DEL
133.1
CLNC DEL
121.7 (when twr closed)
GND CON
121.7
SPIRIT TOWER ★
124.75 257.2
ST LOUIS DEP CON
126.5 254.3

**TOP ALTITUDE:
(JETS) 3000/(PROPS) 2500**

ST. LOUIS
117.4 STL
Chan 121

VICHY
117.7 VIH
Chan 124

FARMINGTON
115.7 FAM
Chan 104

LITTLE ROCK
113.9 LIT
Chan 86

WALNUT RIDGE
114.5 ARG
Chan 92

TAKEOFF MINIMUMS

Rwys 8L, 26R: Standard.
Rwy 8R: 200-1¼ or standard with minimum climb of 238' per NM to 700.
Rwy 26L: 300-2 or standard with minimum climb of 231' per NM to 900.

NOTE: DME and RADAR required.

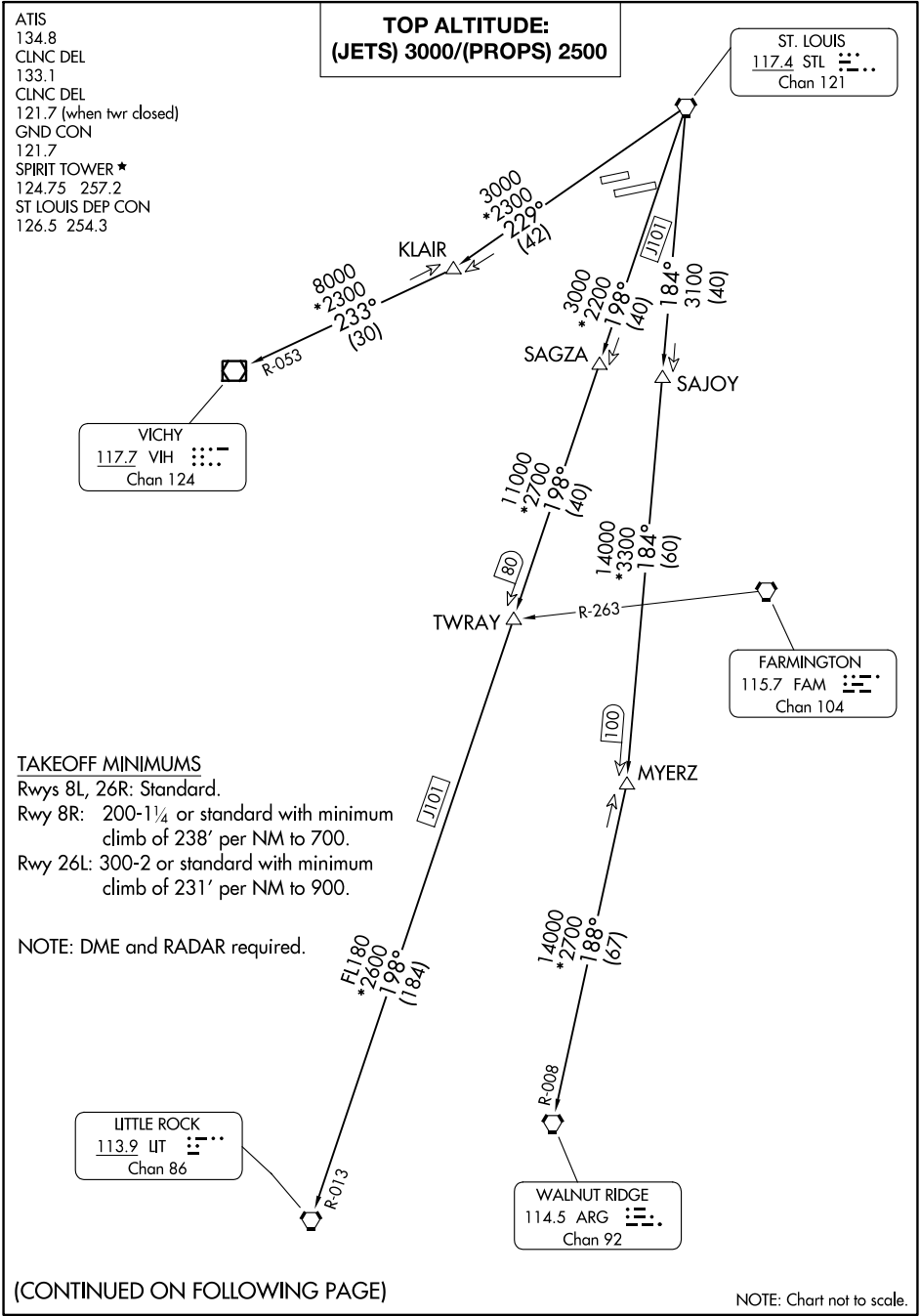
(CONTINUED ON FOLLOWING PAGE)

NOTE: Chart not to scale.

LINDBERGH EIGHT DEPARTURE

NC-3, 28 NOV 2024 to 26 DEC 2024

NC-3, 28 NOV 2024 to 26 DEC 2024





DEPARTURE ROUTE DESCRIPTION

Climb on assigned heading for vector to appropriate route.

JETS: Maintain 3000 or assigned altitude, thence

PROPS: Maintain 2500 or assigned altitude, thence

. . . . (transition). Expect filed altitude 10 minutes after departure.

LITTLE ROCK TRANSITION (LINDY8.LIT): From over STL VORTAC on STL R-198 to TWRAY, then on STL R-198 and LIT R-013 to LIT VORTAC.

MYERZ TRANSITION (LINDY8.MYERZ): From over STL VORTAC on STL R-184 to MYERZ.

VICHY TRANSITION (LINDY8.VIH): From over STL VORTAC on STL R-229 to KLAIR, then on VIH R-053 to VIH VOR/DME.

WALNUT RIDGE TRANSITION (LINDY8.ARG): From over STL VORTAC on STL R-184 to MYERZ, then on ARG R-008 to ARG VORTAC.

NC-3, 28 NOV 2024 to 26 DEC 2024

NC-3, 28 NOV 2024 to 26 DEC 2024