

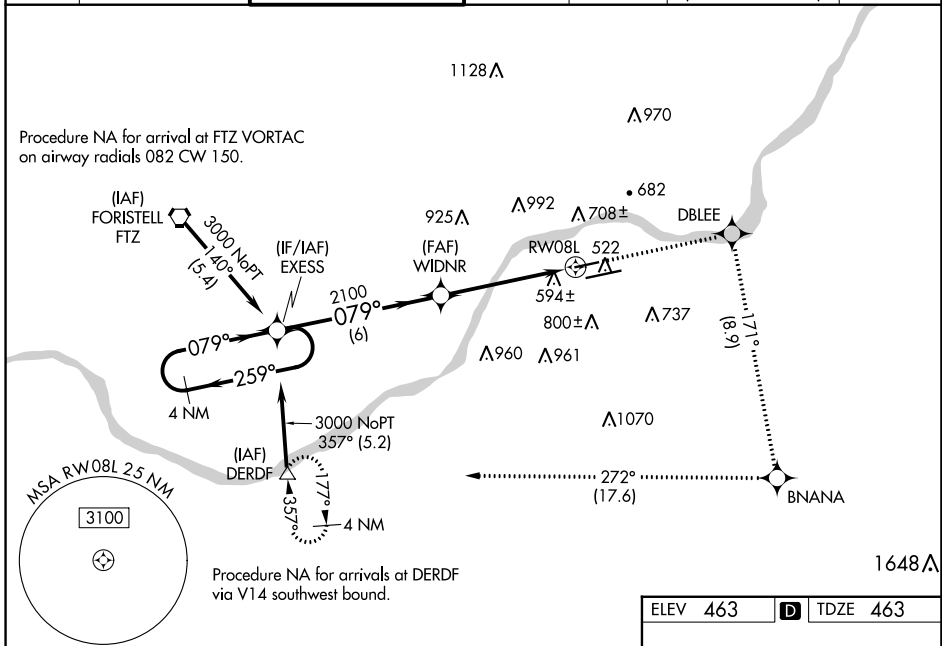
WAAS CH 99414 W08A	APP CRS 079°	Rwy Idg TDZE 463 Apt Elev 463	5000
--	------------------------	---	-------------

RNAV (GPS) RWY 8L

SPRIT OF ST LOUIS (SUS)

RNP APCH - GPS.	MISSED APPROACH: Climb to 3000 direct DBLEE and right turn on track 171° to BNANA and right turn on track 272° to DERDF and hold.
<p>⚠ For uncompensated Baro-VNAV systems, LNAV/VNAV NA below -15°C or above 54°C. Helicopter visibility reduction below 3/4 SM NA. VDP and Baro-VNAV NA when using St Louis Lambert Intl altimeter setting. When local altimeter setting not received, use St Louis Lambert Intl altimeter setting and increase LPV DA to 912, LNAV/VNAV DA to 1132 and all MDA 60 feet, increase LPV all Cats visibility to 1 1/2 miles.</p>	

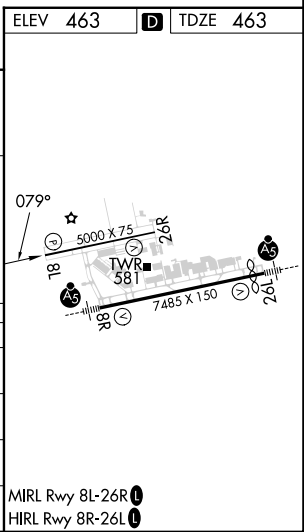
ATIS 134.8	ST. LOUIS APP CON 126.5 254.3	SPRIT TOWER* 124.75 (CTAF) 0 257.2	GND CON 121.7	CLNC DEL 133.1	ST. LOUIS CLNC DEL 121.7 (when tower closed)	UNICOM 122.95
----------------------	---	---	-------------------------	--------------------------	---	-------------------------



NC-3, 28 NOV 2024 to 26 DEC 2024

NC-3, 28 NOV 2024 to 26 DEC 2024

<p>4 NM Holding Pattern</p> <p>GP 3.00° TCH 41</p>		<p>3000</p> <p>DBLEE</p> <p>BNANA</p> <p>DERDF</p>		
<p>EXCESS</p> <p>WIDNR</p> <p>RW08L</p> <p>*1.7 NM to RW08L</p> <p>*LNAV only</p>		<p>2100</p> <p>2100</p> <p>594±</p> <p>594±</p> <p>594±</p>		
<p>6 NM</p> <p>3.3 NM</p> <p>1.7 NM</p>		<p>079°</p> <p>079°</p> <p>079°</p> <p>171°</p> <p>272°</p>		
CATEGORY	A	B	C	D
LPV DA	855-1 3/8	392 (400-1 3/8)		NA
LNAV/VNAV DA	1075-2 1/2	612 (700-2 1/2)		NA
LNAV MDA	1040-1	577 (600-1)		NA
CIRCLING	1100-1 637 (700-1)	1140-1 677 (700-1)		NA



MIRL Rwy 8L-26R **L**
HIRL Rwy 8R-26L **L**