

LOC/DME I-PQL 110.1 Chan 38	APP CRS 168°	Rwy Idg 6501 TDZE 17 Apt Elev 17
---	------------------------	---

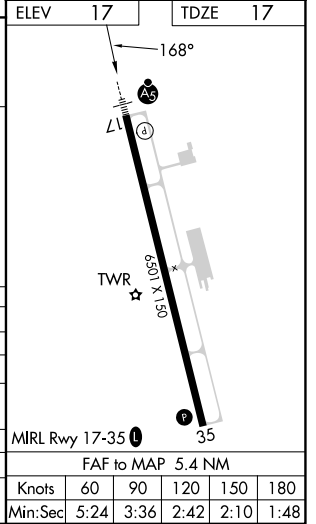
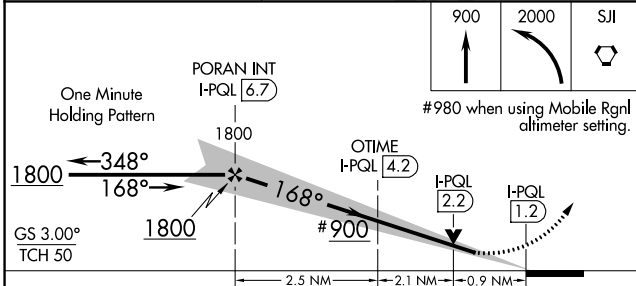
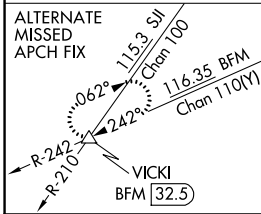
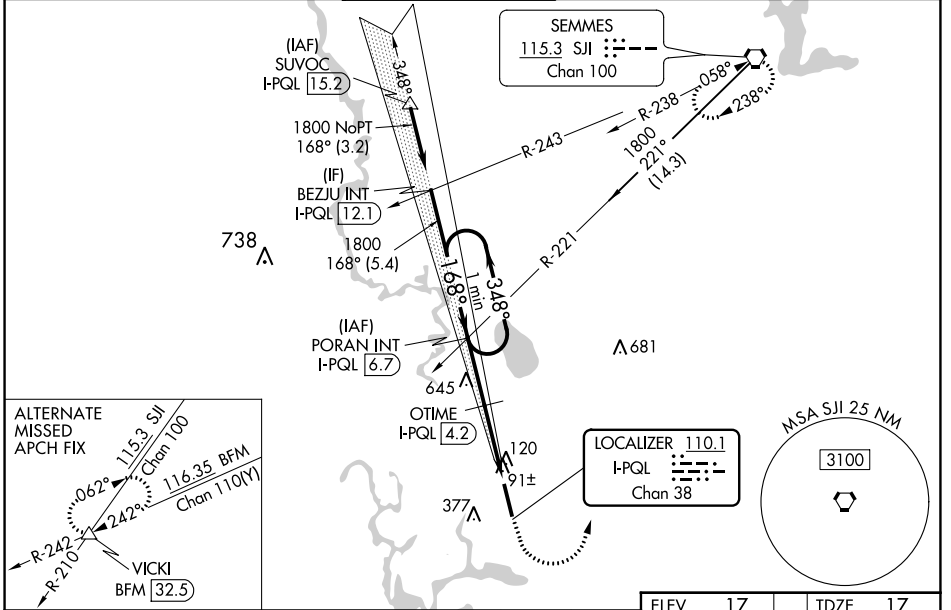
ILS or LOC RWY 17

TRENT LOTT INTL (PQL)

⚠ When local altimeter setting not received, use Mobile Rgnl altimeter setting and increase DA to 292 feet; increase all MDA 80 feet and S-LOC 17 visibility Cat B $\frac{1}{4}$ SM, increase Circling visibility Cats B and C $\frac{1}{4}$ SM. OTIME Fix Minimums, increase S-LOC 17 visibility Cats C and D $\frac{1}{2}$ SM and Circling Cats C and D $\frac{1}{2}$ SM. For inop ALS when using Mobile Rgnl altimeter setting increase S-ILS all Cats visibility to $\frac{2}{5}$ SM.

MALSR
MISSED APPROACH: Climb to 900 then climbing left turn to 2000 direct SJI VORTAC and hold.

ATIS 135.175	MOBILE APP CON ★ 121.0 307.1	TRENT LOTT TOWER ★ 118.575 (CTAF) 0	GND CON 121.725	CLNC DEL 121.725	UNICOM 122.8
------------------------	--	--	---------------------------	----------------------------	------------------------



CATEGORY	A	B	C	D
S-ILS 17	217- $\frac{1}{2}$ 200 (200- $\frac{1}{2}$)			
S-LOC 17	900- $\frac{3}{4}$	883 (900- $\frac{3}{4}$)	900-2	883 (900-2)
C CIRCLING	900-1 $\frac{1}{4}$	883 (900-1 $\frac{1}{4}$)	900-2 $\frac{3}{4}$ 883 (900-2 $\frac{3}{4}$)	900-3 883 (900-3)
OTIME FIX MINIMUMS				
S-LOC 17	360- $\frac{1}{2}$	343 (400- $\frac{1}{2}$)	360- $\frac{5}{8}$	343 (400- $\frac{5}{8}$)
C CIRCLING	480-1 463 (500-1)	680-1 663 (700-1)	680-1 $\frac{3}{4}$ 663 (700- $\frac{1}{4}$)	680-2 663 (700-2)

SC-4, 28 NOV 2024 TO 26 DEC 2024

SC-4, 28 NOV 2024 TO 26 DEC 2024