

APP CRS	Rwy Idg	N/A
051°	TDZE	N/A
	Apt Elev	733

RNAV (GPS)-A

MORRISVILLE-STOWE STATE (MVL)

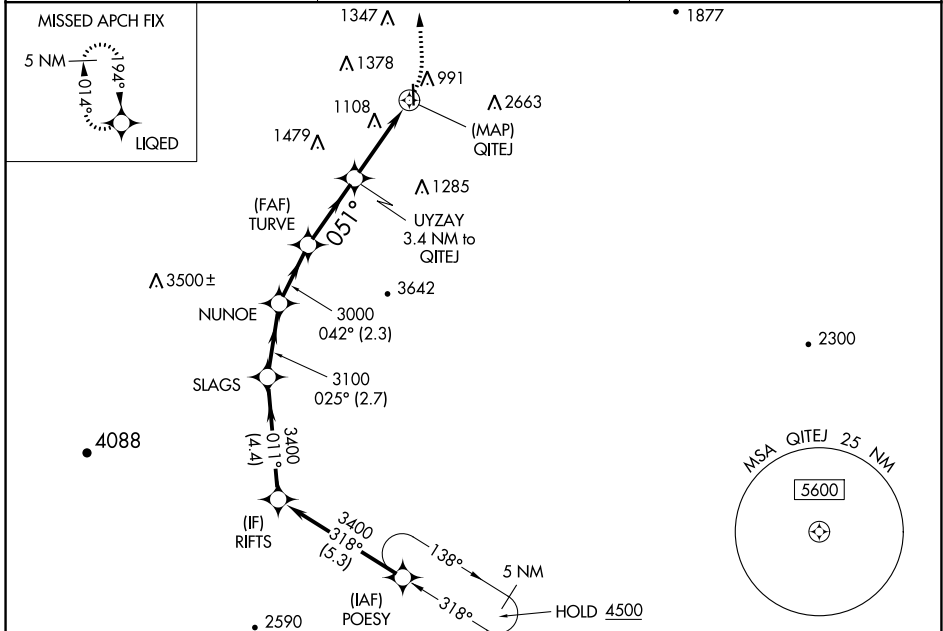
RNP APCH.

⚠ Circling NA for Cat C east of Rwy 1-19. When local altimeter setting not received, use Burlington altimeter setting and increase all MDAs 120 feet.

⚠ -19°C

MISSED APPROACH: Climbing left turn to 5600 direct LIQED and hold, continue climb-in-hold to 5600.

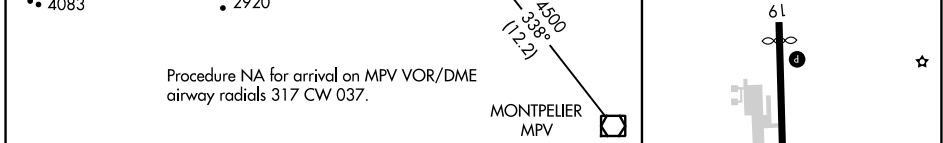
ASOS 135.625	BOSTON CENTER 135.7 282.2	UNICOM 122.8 (CTAF) 📻
------------------------	-------------------------------------	--



ELEV 733

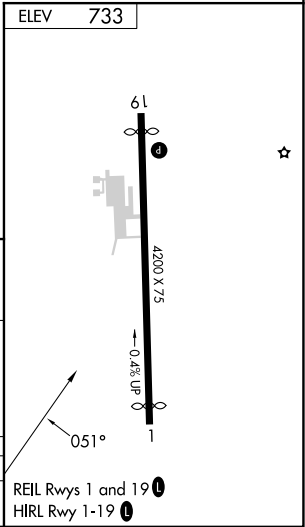
Procedure NA for arrival on MPV VOR/DME airway radials 317 CW 037.

MONTPELIER MPV



RIFTS	SLAGS	NUNOE	TURVE	UYZAY 3.4 NM to QITEJ	LIQED
3400	3400	3100	3000	1980	
011°	025°	042°	051°		
4.4 NM	2.7 NM	2.3 NM	2.9 NM	3.4 NM	

CATEGORY	A	B	C	D
📻 CIRCLING	1620-1¼ 887 (900-1¼)	1780-1½ 1047 (1100-1½)	1980-3 1247 (1300-3)	NA



NE-1, 28 NOV 2024 to 26 DEC 2024

NE-1, 28 NOV 2024 to 26 DEC 2024