

WAAS CH 69300 W05A	APP CRS 049°	Rwy Idg 5000 TDZE 928 Apt Elev 928
--	------------------------	---

RNAV (GPS) RWY 5

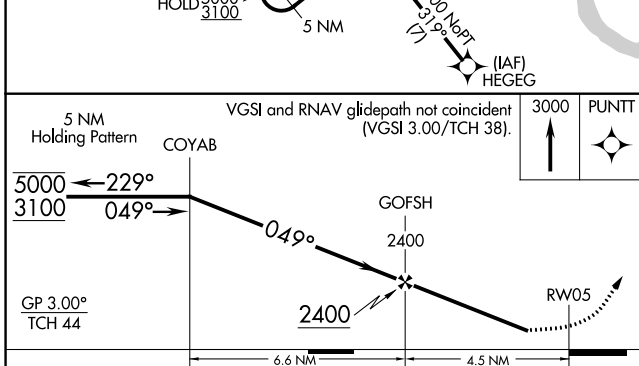
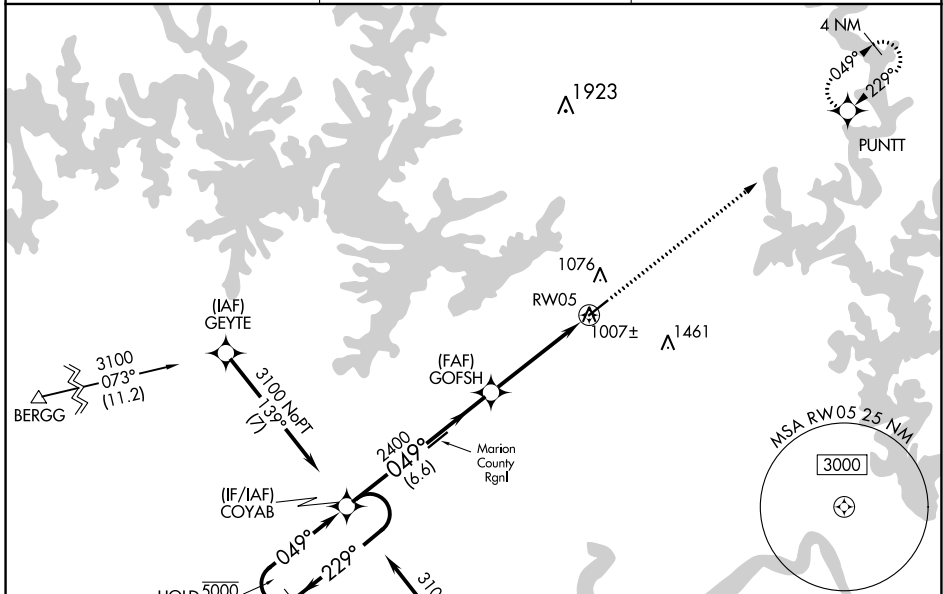
BAXTER COUNTY (BPK)

RNP APCH - GPS.

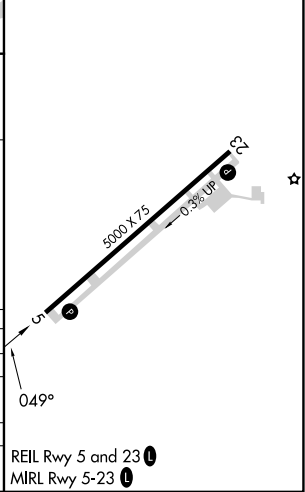
⚠ For uncompensated Baro-VNAV systems, LNAV/VNAV NA below -13°C or above 54°C. Procedure NA at night. Circling NA for Cat C southeast of Rwy 5-23. Rwy 5 helicopter visibility reduction below 1 SM NA.

MISSED APPROACH: Climb to 3000 direct PUNTT and hold.

ASOS 133.975	MEMPHIS CENTER 126.85 281.55	UNICOM 123.0 (CTAF)
------------------------	--	-------------------------------



ELEV 928	TDZE 928
----------	----------



CATEGORY	A	B	C	D
LPV DA	1201-1	273 (300-1)		NA
LNAV/VNAV DA	1250-1	322 (400-1)		NA
LNAV MDA	1280-1	352 (400-1)		NA
C CIRCLING	1400-1	472 (500-1)	1460-1½ 532 (600-1½)	NA

REIL Rwy 5 and 23 **⓪**
MRL Rwy 5-23 **⓪**

SC-1, 28 NOV 2024 to 26 DEC 2024

SC-1, 28 NOV 2024 to 26 DEC 2024