

WAAS CH <b>81904</b> <b>W02A</b>	APP CRS <b>016°</b>	Rwy Idg <b>4599</b> TDZE <b>724</b> Apt Elev <b>724</b>
--	------------------------	---

# RNAV (GPS) RWY 2

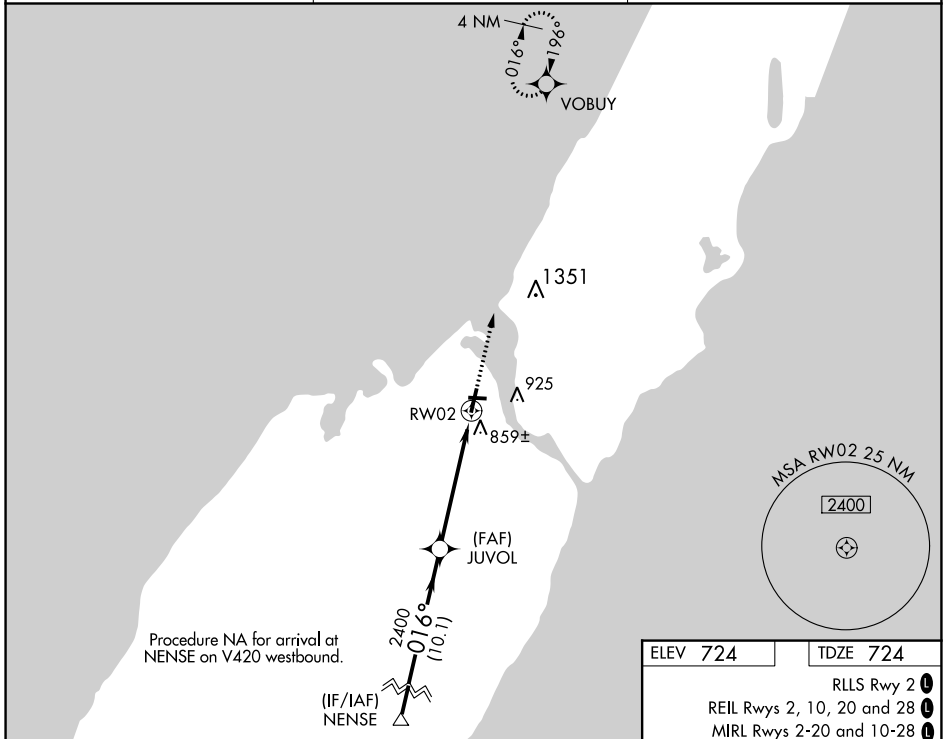
DOOR COUNTY CHERRYLAND (SUE)

RNP APCH.

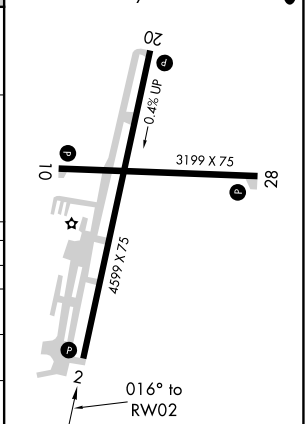
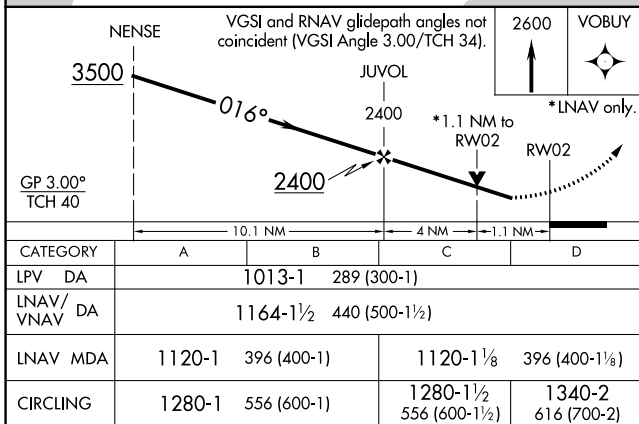
**▼** Rwy 2 helicopter visibility reduction below 3/4 SM NA. For uncompensated Baro-VNAV systems,  
**▲** LNAV/VNAV NA below -16°C or above 54°C.

MISSED APPROACH:  
Climb to 2600 direct  
VOBUY and hold.

AWOS-3PT <b>128.325</b>	GREEN BAY APP CON * <b>119.25 338.2</b>	UNICOM <b>122.7(CTAF) 0</b>
----------------------------	--	--------------------------------



ELEV 724	TDZE 724
RLLS Rwy 2 <b>1</b> REIL Rws 2, 10, 20 and 28 <b>1</b> MIRL Rws 2-20 and 10-28 <b>1</b>	



EC-3, 28 NOV 2024 to 26 DEC 2024

EC-3, 28 NOV 2024 to 26 DEC 2024