


LOC/DME I-HTY <b>108.5</b> Chan <b>22</b>	APP CRS <b>205°</b>	Rwy ldg TDZE Apt Elev	<b>5002</b> <b>1216</b> <b>1216</b>
---	------------------------	-----------------------------	---

# ILS or LOC RWY 21


SAWYER COUNTY (HYR)

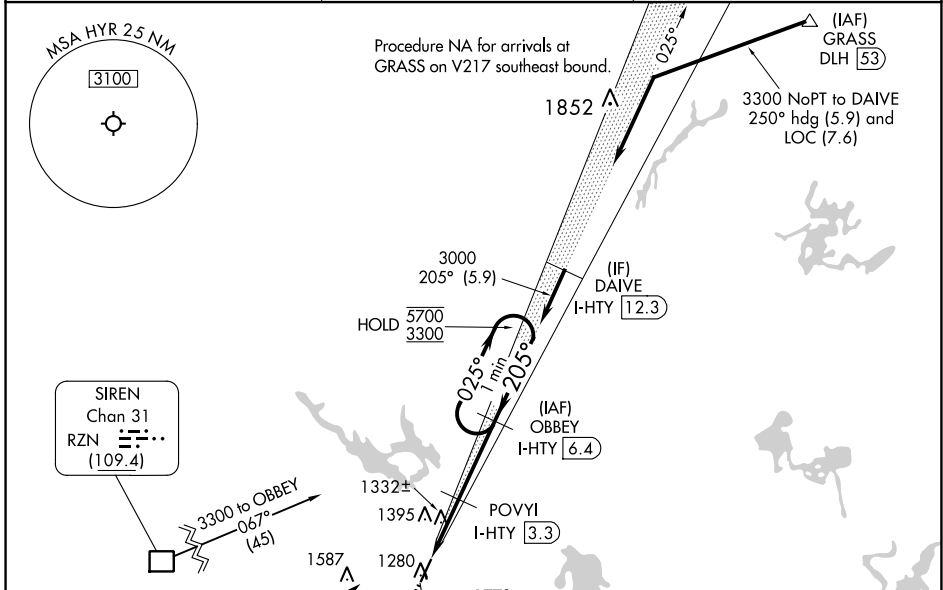
From RZN DME: RNAV 1-GPS required.  
DME required.

**MALS** 

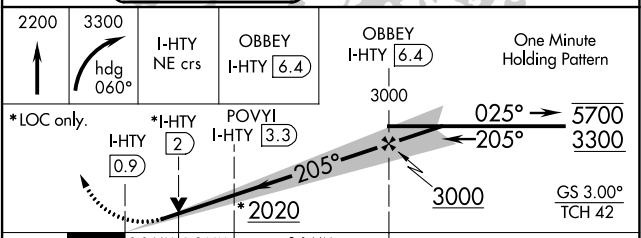
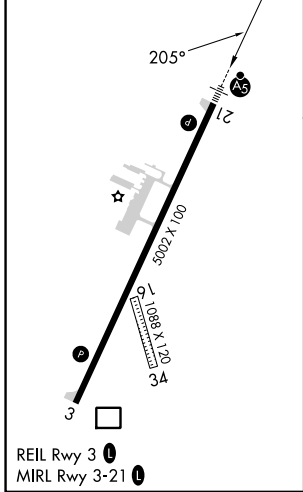
**MISSED APPROACH:** Climb to 2200 then climbing right turn to 3300 on heading 060° and I-HTY northeast course to OBBEY/I-HTY 6.4 DME and hold.


**NA** Circling NA to Rws 16 and 34. Rwy 21 helicopter visibility reduction below 3/4 SM NA. For inop ALS, increase S-ILS 21 all Cats visibility to 1/2 SM, increase LOC Cat A/B visibility to 1 SM, Cat C/D to 1/2 SM.

ASOS <b>118.4</b>	MINNEAPOLIS CENTER <b>126.45 276.4</b>	UNICOM <b>122.8 (CTAF)</b> 
----------------------	---	---



ELEV 1216	TDZE 1216
-----------	-----------



CATEGORY	A	B	C	D
S-ILS 21		1518-3/4	302 (400-3/4)	
S-LOC 21		1600-3/4	384 (400-3/4)	
 CIRCLING	1860-1 644 (700-1)	2060-1 1/4 844 (900-1 1/4)	2120-2 3/4 904 (1000-2 3/4)	2120-3 904 (1000-3)

EC-3, 28 NOV 2024 to 26 DEC 2024

EC-3, 28 NOV 2024 to 26 DEC 2024