


WAAS CH <b>49000</b> <b>W21A</b>	APP CRS <b>205°</b>	Rwy Idg TDZE Apt Elev	<b>5002</b> <b>1216</b> <b>1216</b>
--	------------------------	-----------------------------	---

# RNAV (GPS) RWY 21

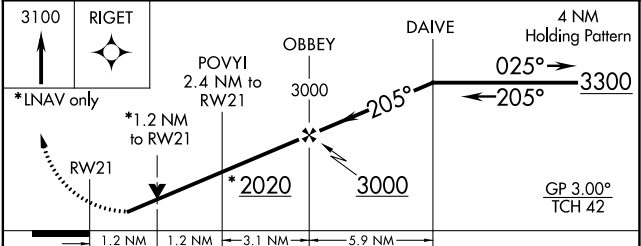
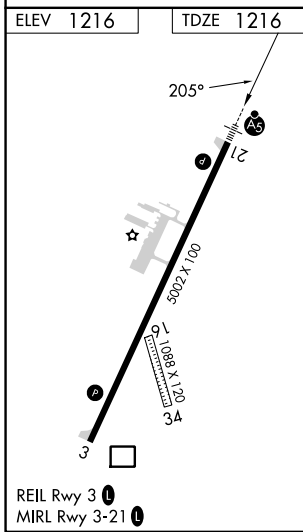
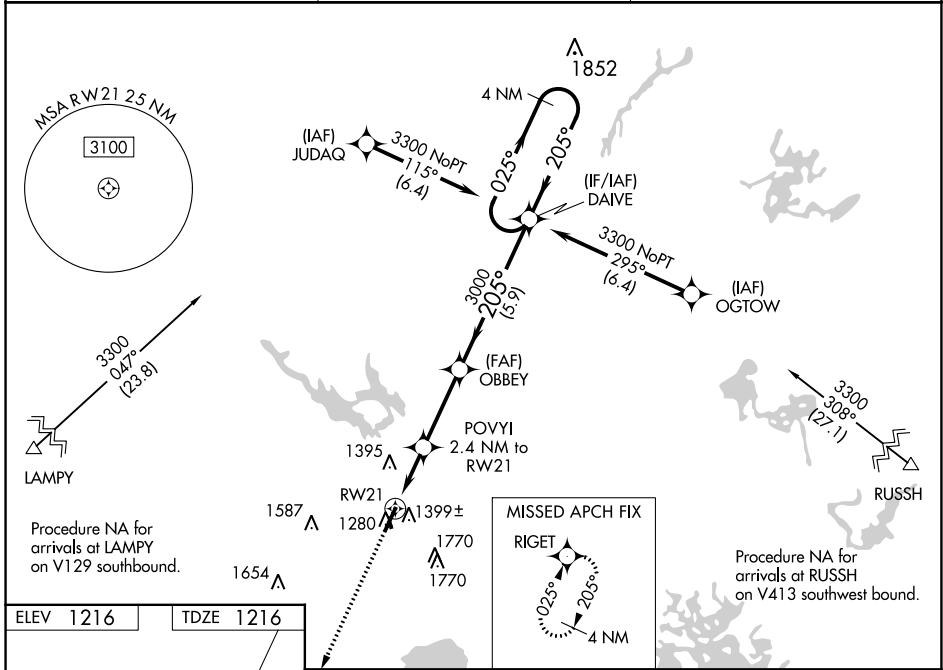
SAWYER COUNTY (HYR)


RNP APCH.

⚠ For uncompensated Baro-VNAV systems, LNAV/VNAV NA below -22°C (-7°F) or above 54°C (130°F). For inop MALSR, increase LNAV/VNAV all Cats visibility to 1½ mile and LNAV Cat A and B visibility to 1 mile. Rwy 21 helicopter visibility reduction below ¾ SM NA. Circling NA to Rwy 16 and 34.

MALSR  MISSED APPROACH: Climb to 3100 direct RIGET and hold.

ASOS <b>118.4</b>	MINNEAPOLIS CENTER <b>126.45 276.4</b>	UNICOM <b>122.8 (CTAF) 0</b>
----------------------	---	---------------------------------



CATEGORY	A	B	C	D
LPV DA		1518-¾	302 (400-¾)	
LNAV/VNAV DA		1560-¾	344 (400-¾)	
LNAV MDA		1640-¾	424 (500-¾)	
 CIRCLING	1860-1 644 (700-1)	2060-1¼ 844 (900-1¼)	2120-2¾ 904 (1000-2¾)	2120-3 904 (1000-3)

EC-3, 28 NOV 2024 to 26 DEC 2024

EC-3, 28 NOV 2024 to 26 DEC 2024